

ORLANDO, FLORIDA

AL-571 (FAA)

24053

WAAS CH <b>72913</b> <b>W17A</b>	APP CRS <b>185°</b>	Rwy Idg <b>10000</b> TDZE <b>90</b> Apt Elev <b>96</b>
--	------------------------	--

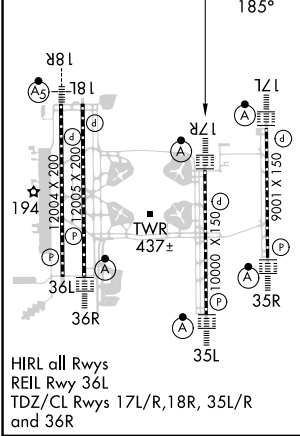
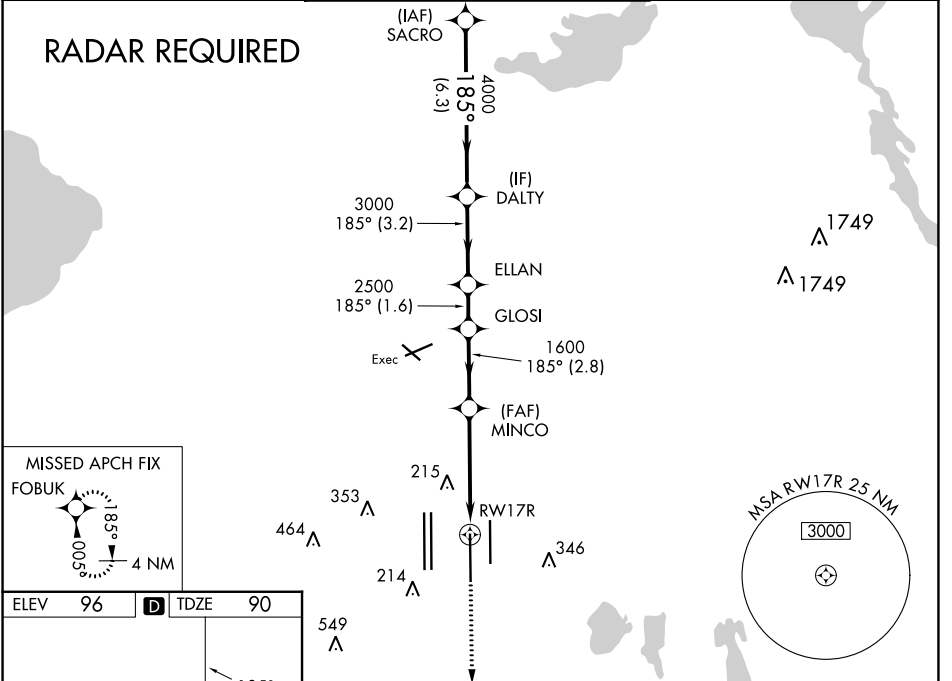
# RNAV (GPS) RWY 17R

ORLANDO INTL (MCO)

RNP APCH-GPS.	ALSF-2 	MISSED APPROACH: Climb to 3000 direct FOBUK and hold.
---------------	------------	---

▼ For uncompensated Baro-VNAV systems, LNAV/VNAV NA below -1° C or above 54° C.  
Bright lights on highway midway between Rwy 17L and Rwy 17R may be mistaken for runway lights. Simultaneous approach authorized with Rwy 17L and Rwy 18L, or Rwy 17L and Rwy 18R. LNAV procedure NA during simultaneous operations. Use of FD or AP required during simultaneous operations. For inop ALS, increase LNAV Cats C/D visibility to 1/8 SM.

D-ATIS ARR <b>121.25</b> DEP <b>120.525</b>	ORLANDO APP CON <b>124.8 307.0</b>	ORLANDO TOWER <b>118.45 253.5</b> (Rwys 17L-35R, 17R-35L) <b>124.3 253.5</b> (Rwys 18L-36R, 18R-36L)	GND CON <b>126.4</b> (East) <b>121.8</b> (West)	CLNC DEL <b>134.7</b> <b>341.7</b>	CPDLC
---	---------------------------------------	--	---	--	-------



VGSI and RNAV glidepath not coincident (VGSI Angle 3.00/TCH 71).

3000	FOBUK
------	-------

GP 3.00° TCH 53

4000	185°	4000	3000	2500	1600	1.6 NM to RWY 17R
6.3 NM	3.2 NM	1.6 NM	2.8 NM	2.9 NM	1.6 NM	

CATEGORY	A	B	C	D
LPV DA		290/18	200 (200-1/2)	
LNAV/VNAV DA		526/50	436 (500-1)	
LNAV MDA	660/24	570 (600-1/2)	660-1 1/4	570 (600-1 1/4)
CIRCLING	740-1	644 (700-1)	740-1 3/4 644 (700-1 3/4)	740-2 644 (700-2)

SE-3, 08 AUG 2024 to 05 SEP 2024

SE-3, 08 AUG 2024 to 05 SEP 2024

ORLANDO, FLORIDA  
Orig-E 22FEB24

28°26'N-81°19'W

ORLANDO INTL (MCO)  
**RNAV (GPS) RWY 17R**