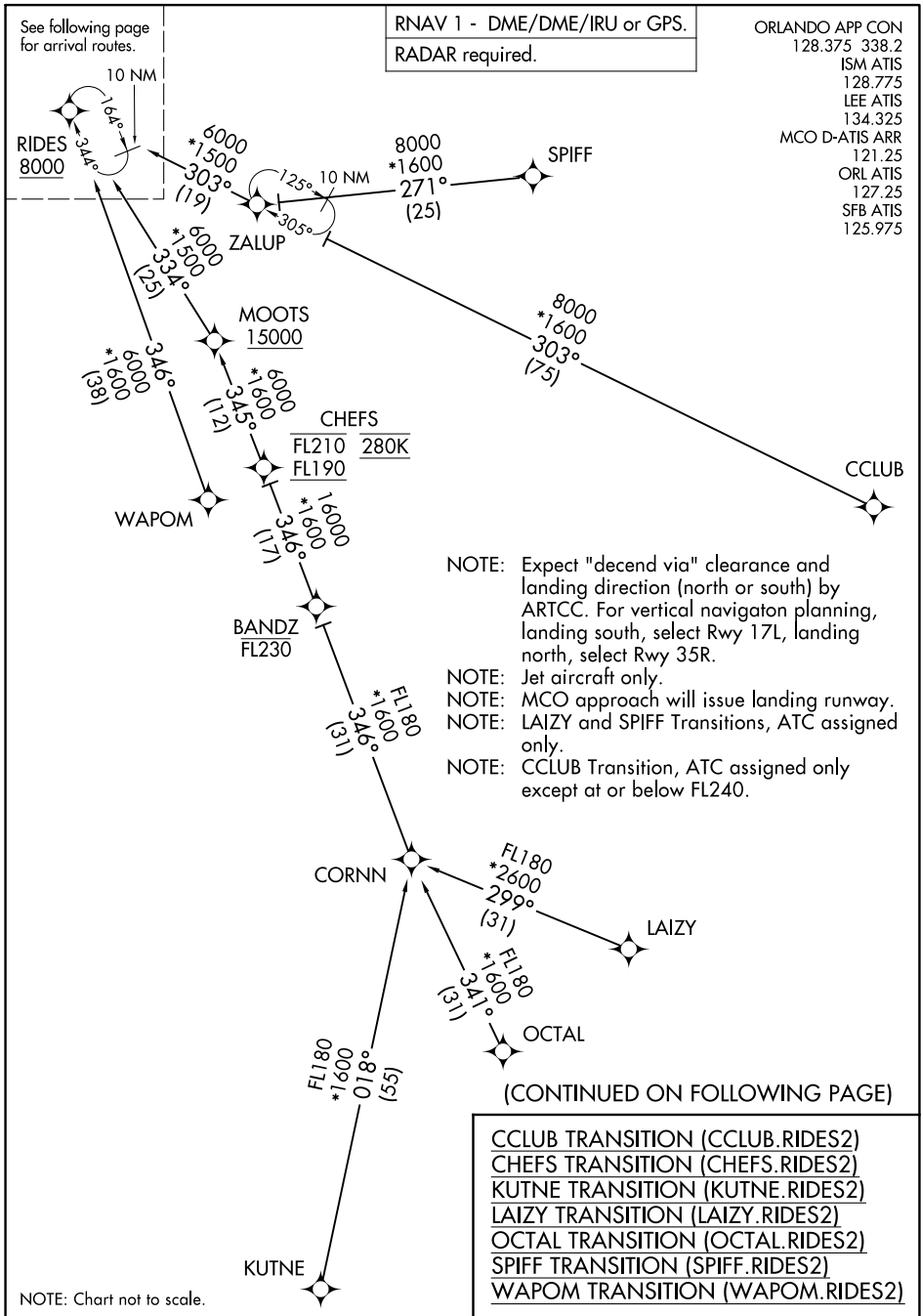


RIDES TWO ARRIVAL (RNAV) Transition Routes

ORLANDO, FLORIDA



SE-3, 08 AUG 2024 to 05 SEP 2024

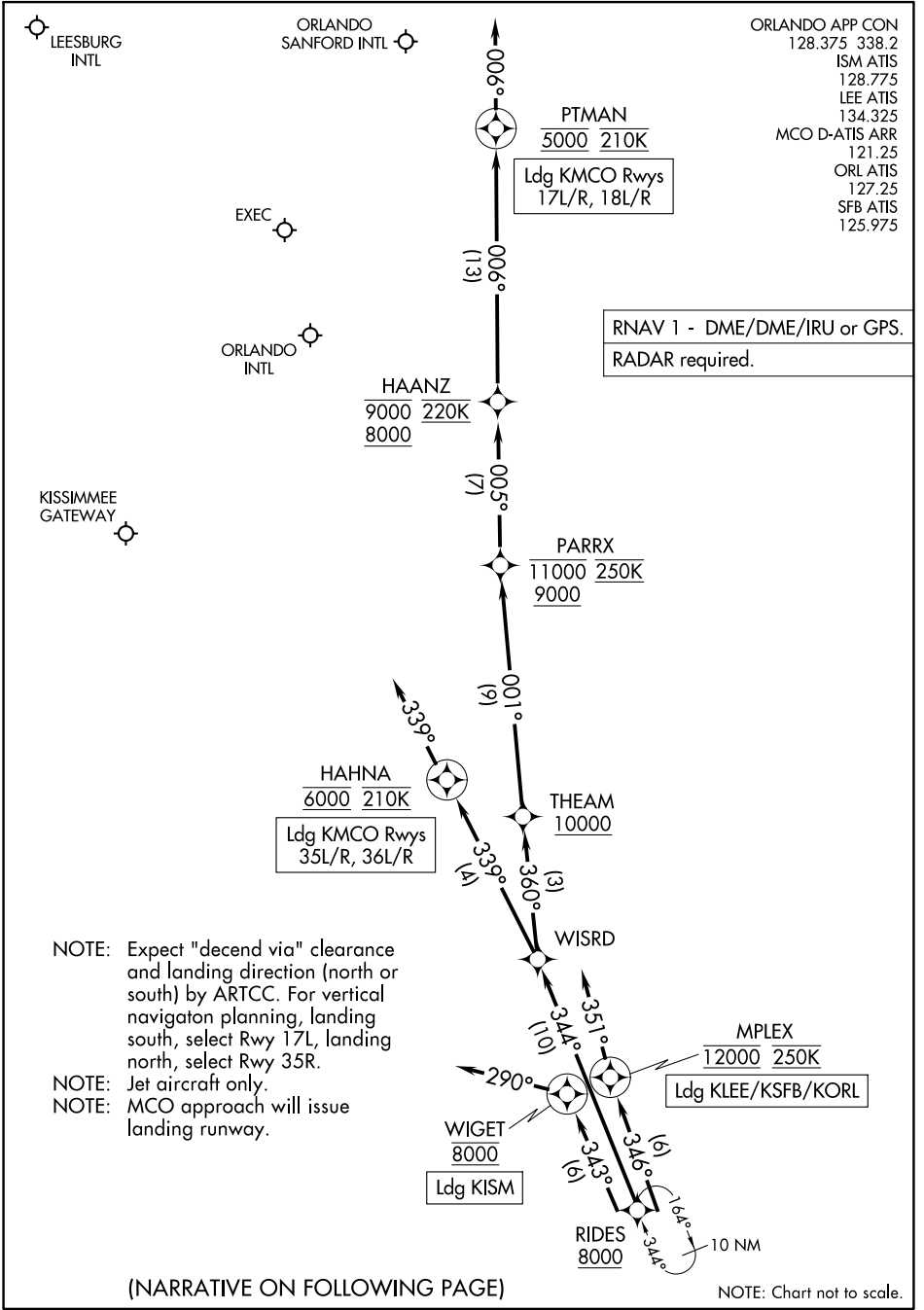
SE-3, 08 AUG 2024 to 05 SEP 2024

RIDES TWO ARRIVAL (RNAV) Transition Routes

ORLANDO, FLORIDA

RIDES TWO ARRIVAL (RNAV) Arrival Routes

ORLANDO, FLORIDA



SE-3, 08 AUG 2024 to 05 SEP 2024

SE-3, 08 AUG 2024 to 05 SEP 2024

ARRIVAL ROUTE DESCRIPTION

KMCO: From RIDES on track 344° to WISRD.

LANDING KMCO RUNWAYS 17L/R, 18L/R: From WISRD on track 360° to cross THEAM at or above 10000, then on track 001° to cross PARRX between 9000 and 11000 and at 250K, then on track 005° to cross HAANZ between 8000 and 9000 and at 220K, then on track 006° to cross PTMAN at 5000 and at 210K, then on track 006°. Expect RADAR vectors to final approach course.

LANDING KMCO RUNWAYS 35L/R, 36L/R: From WISRD on track 339° to cross HAHNA at 6000 and at 210K, then on track 339°. Expect ILS or RNAV Rwy 35R approach or RADAR vectors to final approach course.

LANDING KISM: From RIDES on track 343° to cross WIGET at 8000, then on heading 290°. Expect RADAR vectors to final approach course.

LANDING KLEE/KSFB/KORL: From RIDES on track 346° to cross MPLEX at 12000 and at 250K, then on heading 351°. Expect RADAR vectors to final approach course.

SE-3, 08 AUG 2024 to 05 SEP 2024

SE-3, 08 AUG 2024 to 05 SEP 2024