

# OLYMPIA TWO ARRIVAL

AL-582 (FAA)

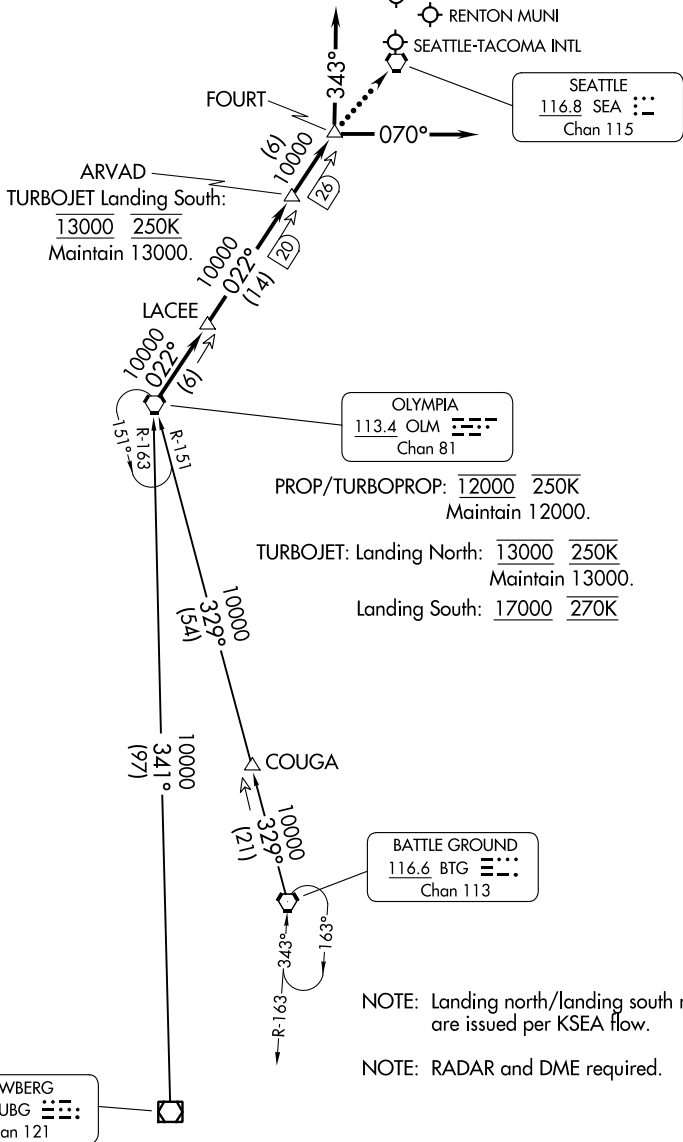
SEATTLE, WASHINGTON

SEATTLE APP CON  
 125.6 273.45  
 BFI ATIS  
 127.75  
 PAE ATIS  
 128.65  
 RTN ATIS  
 126.95  
 SEA D-ATIS  
 118.0

SEATTLE PAINE FLD INTL

BOEING FLD/  
 KING COUNTY INTL  
 RENTON MUNI  
 SEATTLE-TACOMA INTL

SEATTLE  
 116.8 SEA  
 Chan 115



NOTE: Landing north/landing south restrictions are issued per KSEA flow.

NOTE: RADAR and DME required.

(NARRATIVE ON FOLLOWING PAGE)

NOTE: Chart not to scale.

NW-1, 08 AUG 2024 to 05 SEP 2024

NW-1, 08 AUG 2024 to 05 SEP 2024

# OLYMPIA TWO ARRIVAL

SEATTLE, WASHINGTON

ARRIVAL ROUTE DESCRIPTION

BATTLE GROUND TRANSITION (BTG.OLM2): From over BTG VORTAC on BTG R-329 to COUGA, then on BTG R-329 and OLM R-151 to OLM VORTAC. Thence. . . .

NEWBERG TRANSITION (UBG.OLM2): From over UBG VOR/DME on UBG R-341 and OLM R-163 to OLM VORTAC. Thence. . . .

. . . . from over OLM VORTAC on OLM R-022 to LACEE, then on OLM R-022 to ARVAD, then on OLM R-022 to FOURT, thence. . . .

. . . . LANDING NORTH SEA/BFI: Depart FOURT heading 070° for vectors to final approach course.

. . . . LANDING SOUTH SEA/BFI: Depart FOURT heading 343° for vectors to final approach course.

. . . . LANDING SEATTLE PAINE FLD INTL: Depart FOURT heading 343° for vectors to final approach course.

. . . . LANDING RENTON MUNI: Depart FOURT heading 343° for vectors to final approach course.

LOST COMMUNICATIONS: From over FOURT, proceed direct SEA VORTAC.

NW-1, 08 AUG 2024 to 05 SEP 2024

NW-1, 08 AUG 2024 to 05 SEP 2024