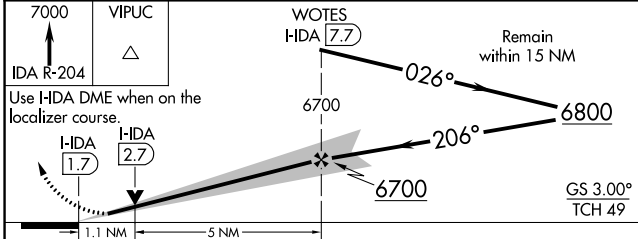
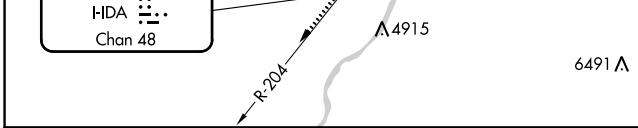
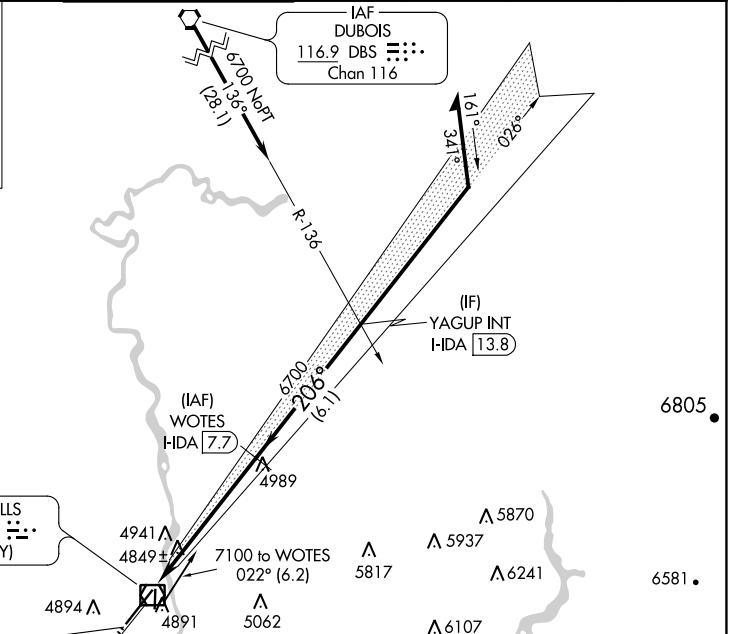
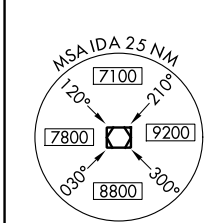
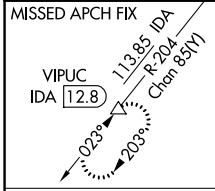


LOC/DME I-HDA 111.1 Chan 48	APP CRS 206°	Rwy Idg TDZE Apt Elev	9002 4735 4744
---	------------------------	-----------------------------	---

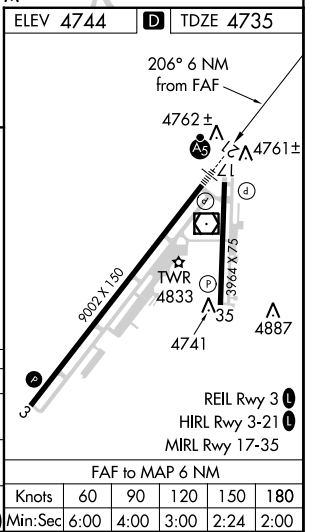
ILS or LOC RWY 21

IDAHO FALLS RGNL (IDA)

DME required.		MALSR	MISSED APPROACH: Climb to 7000 on IDA VOR/DME R-204 to VIPUC/12.8 DME and hold.						
<p>▼ Circling to Rwy 35 NA at night. For inop ALS, increase S-ILS 21 Cat E visibility to RVR 4000, and S-LOC 21 Cat E visibility to RVR 6000.</p> <p>▲</p>			ATIS 135.325	SALT LAKE CENTER 128.35 239.25	IDAHO FALLS TOWER* 118.5 (CTAF) 0 257.8	GND CON 121.7	CLNC DEL 121.7	GCO 121.725	UNICOM 122.95



CATEGORY	A	B	C	D	E
S-ILS 21	4985/24		250 (300-½)		
S-LOC 21	5120/24	385 (400-½)	5120/35		385 (400-¾)
CIRCLING	5200-1 456 (500-1)	5300-1 556 (600-1)	5400-1¾ 656 (700-1¾)	5420-2¼ 676 (700-2¼)	5420-2½ 676 (700-2½)



NW-1, 08 AUG 2024 to 05 SEP 2024

NW-1, 08 AUG 2024 to 05 SEP 2024