

SC-4, 08 AUG 2024 to 05 SEP 2024

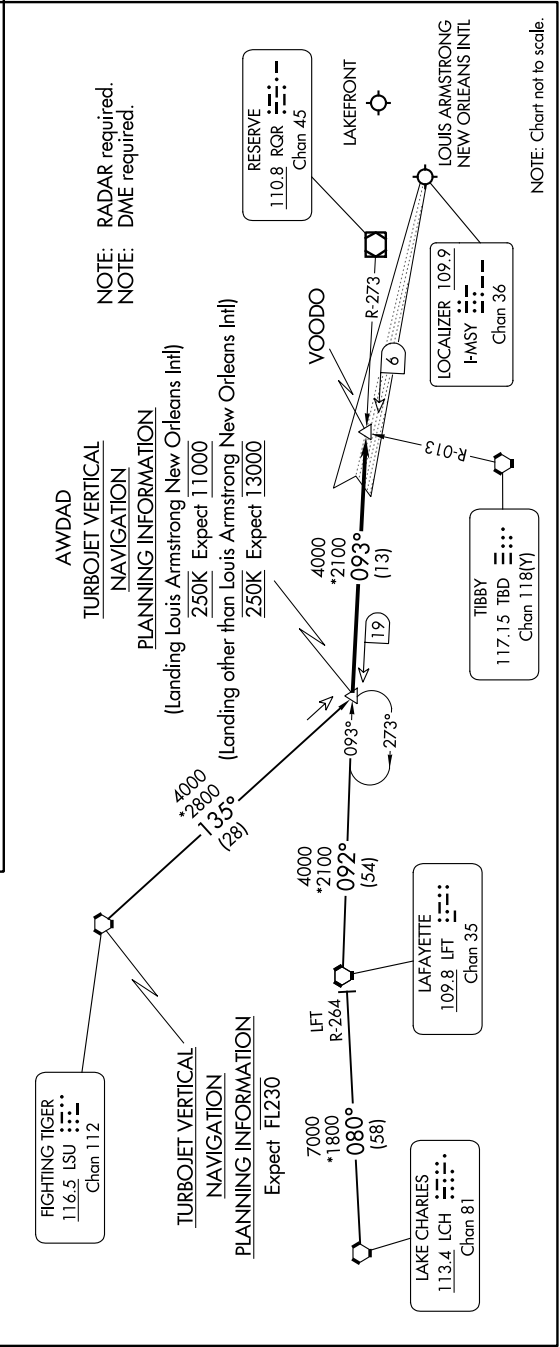
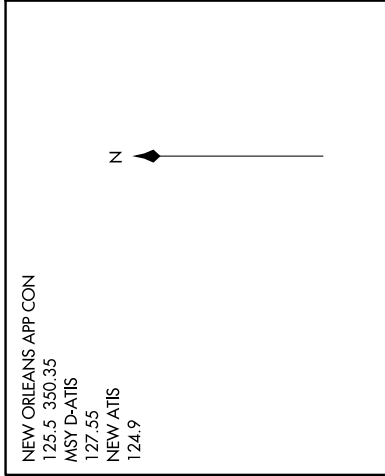
**ARRIVAL ROUTE DESCRIPTION**

**FIGHTING TIGER TRANSITION [LSU.AWDAD1]:** From over LSU VORTAC on LSU R-135 to AWDAD INT.

**LAFAYETTE TRANSITION [LFT.AWDAD1]:** From over LFT VOTRAC on LFT R-092 and RQR R-273 to AWDAD INT.

**LAKE CHARLES TRANSITION [LCH.AWDAD1]:** From over LCH VORTAC on LCH R-080 and LFT R-264 to LFT VORTAC then on LFT R-092 and RQR R-273 to AWDAD INT.

From over AWDAD INT on RQR VOR/DME R-273 to VOODO INT.  
**LANDING KMSY RWY 11:** Intercept I-MSY localizer and expect clearance for ILS RWY 11 approach.  
**LANDING OTHER:** Expect vectors to final approach course.



SC-4, 08 AUG 2024 to 05 SEP 2024

NOTE: Chart not to scale.

NOTE: RADAR required.  
 NOTE: DME required.