

LOC/DME I-MSY 109.9 Chan 36	APP CRS 106°	Rwy Idg 9800 TDZE 4 Apt Elev 4
---	------------------------	---

ILS RWY 11 (CAT II & III)

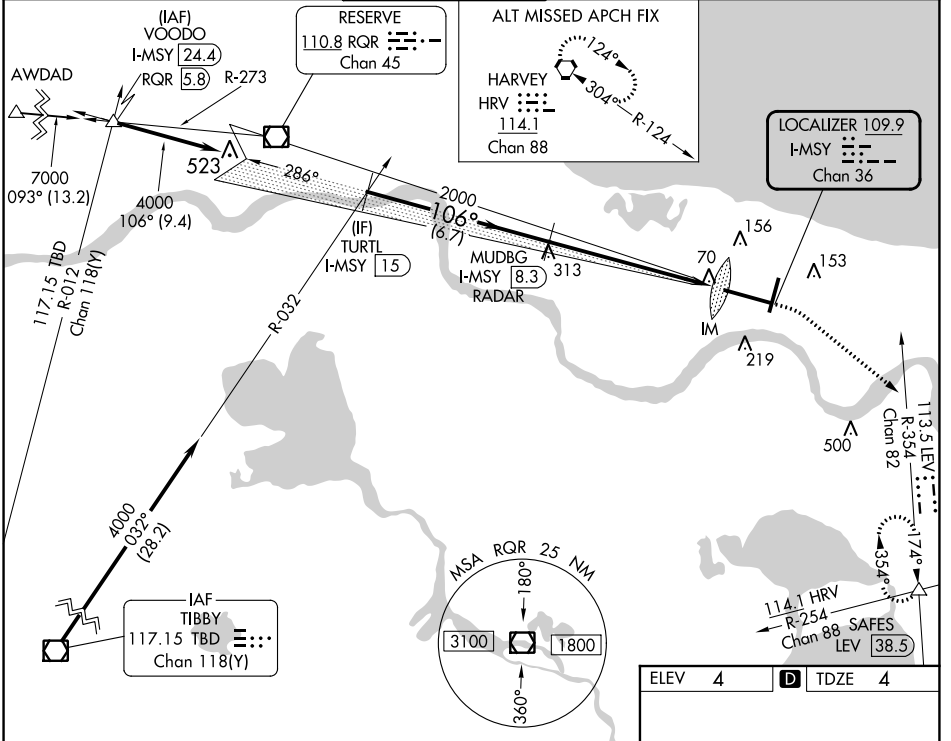
LOUIS ARMSTRONG NEW ORLEANS INTL (MSY)

RADAR or DME required.

ALSF-2

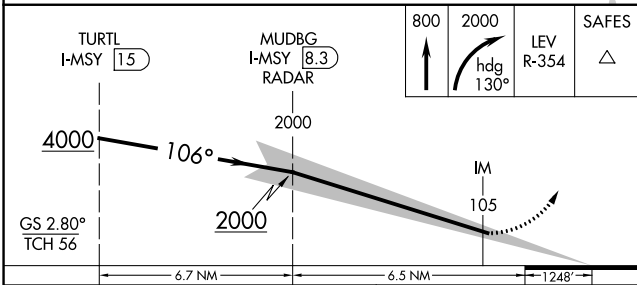
MISSED APPROACH: Climb to 800 then climbing right turn to 2000 on heading 130° and on LEV VORTAC R-354 to SAFES INT/LEV 38.5 DME and hold.

D-ATIS 127.55	NEW ORLEANS APP CON WEST 125.5 350.35 EAST 133.15 290.3	NEW ORLEANS TOWER 119.5 254.3	GND CON 121.9 273.525	CLNC DEL 120.925	CPDLC
-------------------------	---	---	---------------------------------	----------------------------	-------

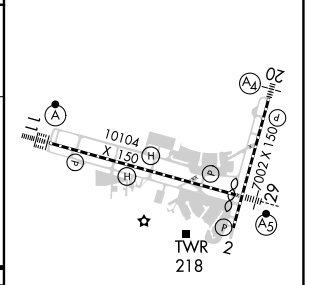


SC-4, 08 AUG 2024 to 05 SEP 2024

SC-4, 08 AUG 2024 to 05 SEP 2024



ELEV 4	D TDZE 4
---------------	------------------------



CATEGORY	A	B	C	D
S-ILS 11	CAT II RA 100/12 100 DA 104			
S-ILS 11	CAT III RVR 06			

CATEGORY II & III ILS - SPECIAL AIRCREW & AIRCRAFT CERTIFICATION REQUIRED

RLS Rwy 2
TDZ/CL Rwy 11
HIRL All Runways