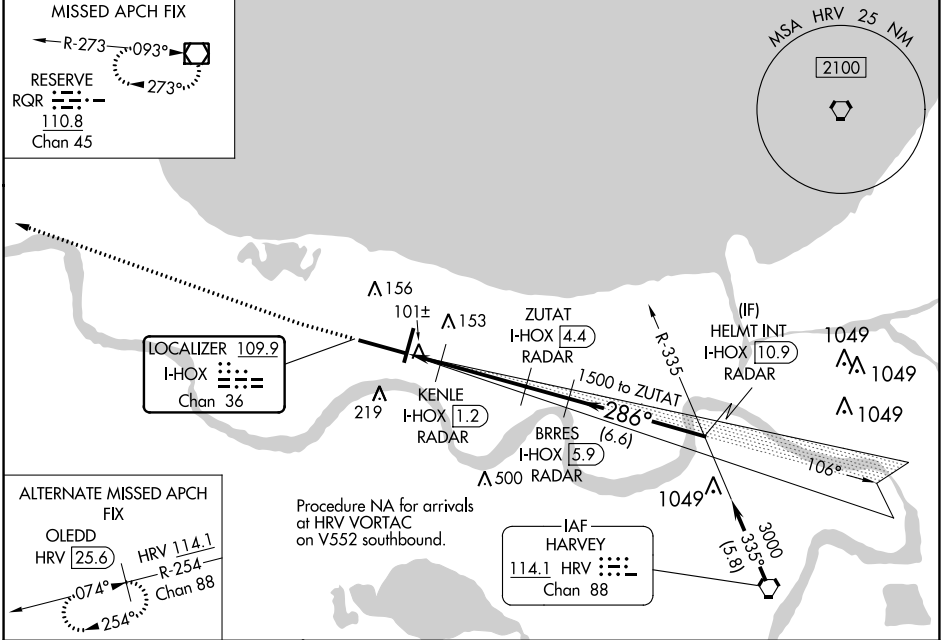


LOC/DME I-HOX 109.9 Chan 36	APP CRS 286°	Rwy Idg 9800 TDZE 2 Apt Elev 4
---	------------------------	---

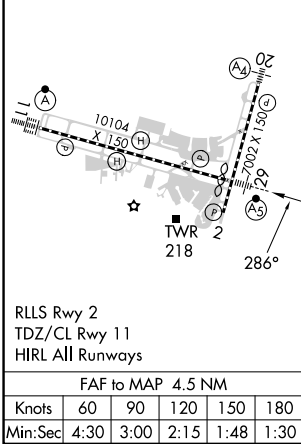
ILS or LOC RWY 29
LOUIS ARMSTRONG NEW ORLEANS INTL (MSY)

<p>▼ DME or RADAR required. For inop MALSR, increase S-LOC 29 Cat C/D visibility to 1½ mile and increase KENLE Fix Minimums S-LOC 29 Cat C/D visibility to RVR 5500. **RVR 1800 authorized with use of FD or AP or HUD to DA.</p>	<p>MALSR </p>	<p>MISSED APPROACH: Climb to 600 then climbing right turn to 3000 direct RQR VOR/DME and hold.</p>
--	---------------	--

D-ATIS 127.55	NEW ORLEANS APP CON WEST 125.5 350.35 EAST 133.15 290.3	NEW ORLEANS TOWER 119.5 254.3	GND CON 121.9 273.525	CLNC DEL 120.925	CPDLC
-------------------------	---	---	---------------------------------	----------------------------	-------



ELEV 4	D	TDZE 2	600	3000	RQR	VGSI and ILS glidepath not coincident (VGSI Angle 3.00/TCH 68).
--------	----------	--------	-----	------	-----	---



*LOC only.	I-HOX DME ANTENNA I-HOX [0.2]	KENLE I-HOX [1.2] RADAR	ZUTAT I-HOX [4.4] RADAR	BRRES I-HOX [5.9] RADAR	HELMT INT I-HOX [10.9] RADAR
	1.4 NM	3.1 NM	1.6 NM	5 NM	
CATEGORY	A	B	C	D	
S-ILS 29 **	202/24		200 (200-½)		
S-LOC 29	480/24	478 (500-½)	480/50	478 (500-1)	
C CIRCLING	520-1	516 (600-1)	580-1½ 576 (600-1½)	600-2 596 (600-2)	
KENLE FIX MINIMUMS					
S-LOC 29	360/24	358 (400-½)	360/30	358 (400-¾)	
C CIRCLING	520-1	516 (600-1)	580-1½ 576 (600-1½)	600-2 596 (600-2)	

SC-4, 08 AUG 2024 to 05 SEP 2024

SC-4, 08 AUG 2024 to 05 SEP 2024