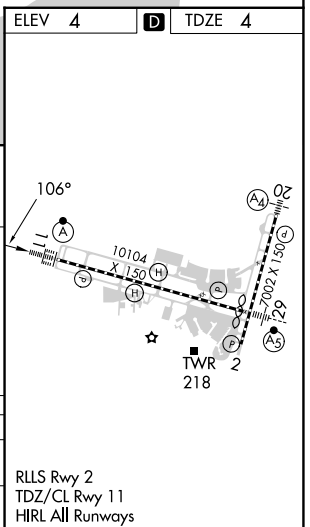
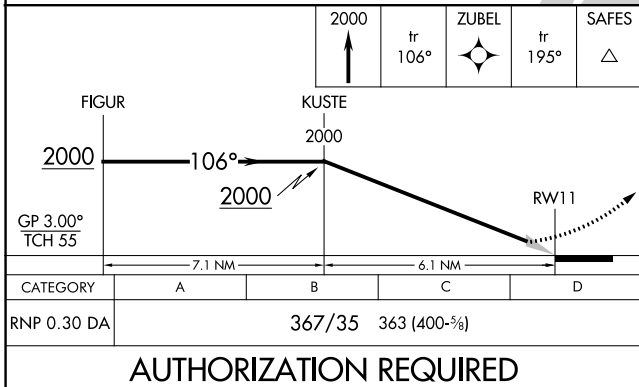
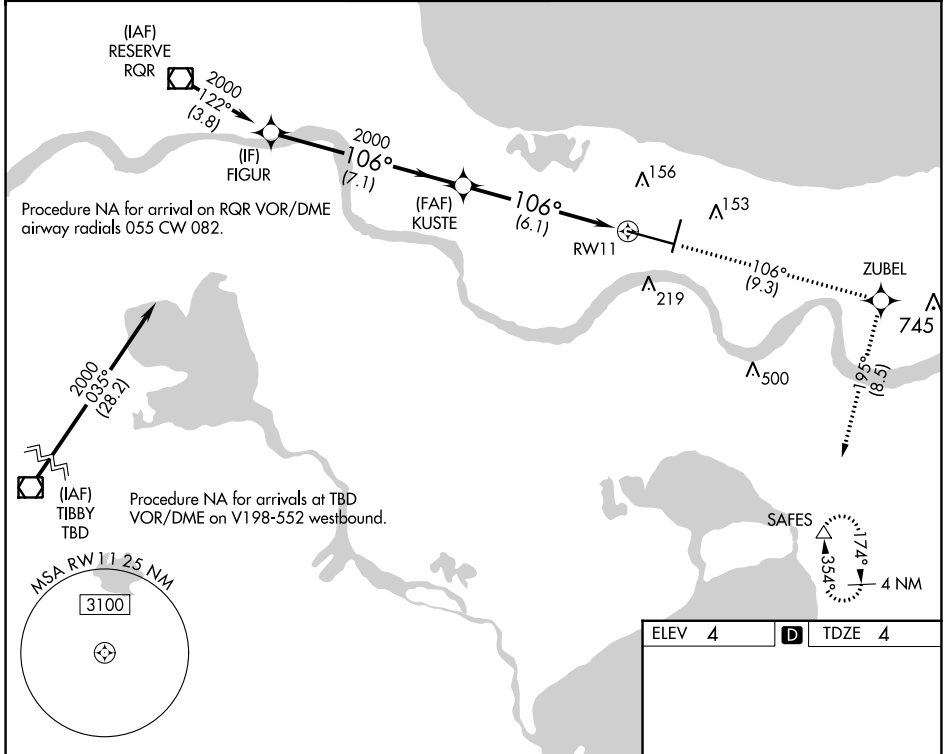


APP CRS 106°	Rwy Idg TDZE Apt Elev	9800 4 4
------------------------	-----------------------------	-------------------------------------

RNAV (RNP) Z RWY 11

LOUIS ARMSTRONG NEW ORLEANS INTL (MSY)

RNP AR APCH - GPS.		NEW ORLEANS TOWER		GND CON		CLNC DEL		CPDLC	
<p>▼ For uncompensated Baro-VNAV systems, procedure NA below -1°C or above 54°C. For inop ALS, increase RNP 0.30 all Cats visibility to RVR 5500.</p>		<p>127.55 WEST 125.5 350.35 EAST 133.15 290.3</p>		<p>119.5 254.3</p>		<p>121.9 273.525</p>		<p>120.925</p>	



SC-4, 08 AUG 2024 to 05 SEP 2024

SC-4, 08 AUG 2024 to 05 SEP 2024