

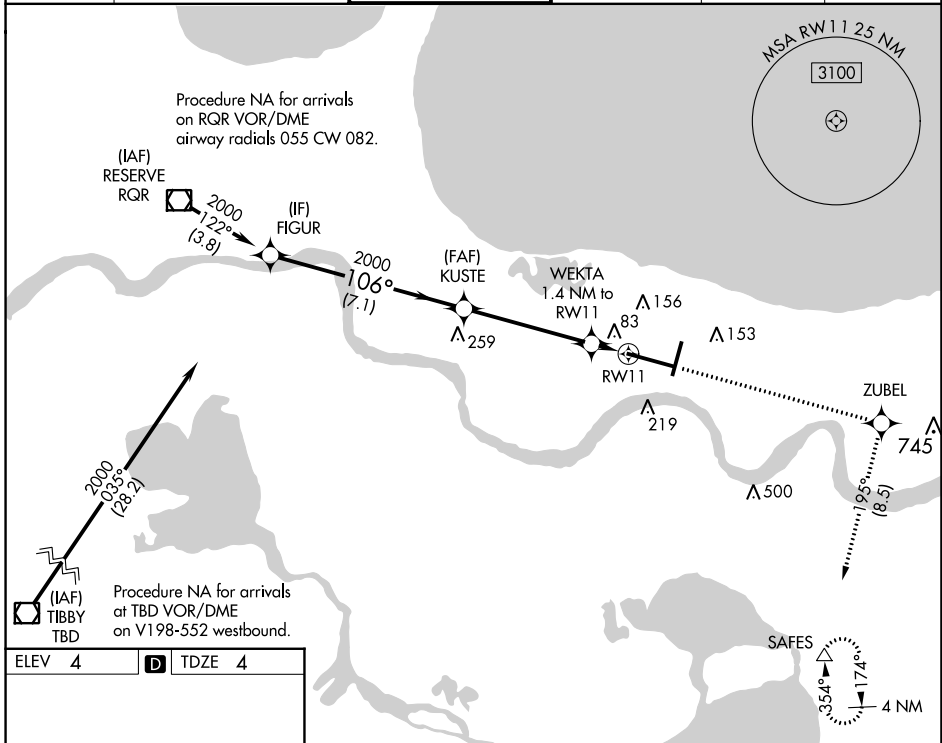
WAAS CH 61319 W11A	APP CRS 106°	Rwy Idg TDZE Apt Elev 9800 4 4
--	------------------------	--

RNAV (GPS) Y RWY 11

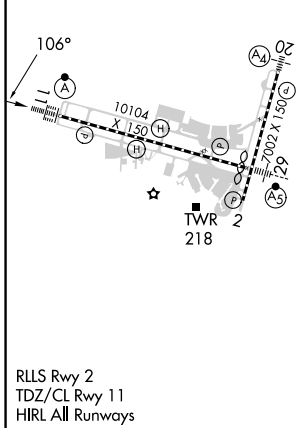
LOUIS ARMSTRONG NEW ORLEANS INTL (MSY)

▽ For uncompensated Baro-VNAV systems, LNAV/VNAV NA below -1°C (31°F) or above 54°C (130°F). DME/DME RNP-0.3 NA. For inop ALSF-2, increase LNAV/VNAV all Cats visibility to RVR 4000.	ALSF-2 	MISSED APPROACH: Climb to 2000 direct ZUBEL and on track 195° to SAFES and hold.
--	------------	--

D-ATIS 127.55	NEW ORLEANS APP CON WEST 125.5 350.35 EAST 133.15 290.3	NEW ORLEANS TOWER 119.5 254.3	GND CON 121.9 273.525	CLNC DEL 120.925	CPDLC
-------------------------	---	---	---------------------------------	----------------------------	-------



ELEV 4	D	TDZE 4
--------	----------	--------



FIGUR	2000	106°	KUSTE	2000	ZUBEL	tr 195°	SAFES
2000		2000		*500		*LNAV only.	
7.1 NM		4.7 NM		1.4 NM			
WEKTA	1.4 NM to RW11		RW11				
CATEGORY	A		B		C		D
LPV DA	204/18		200 (200-½)				
LNAV/VNAV DA	254/24		250 (300-½)				
LNAV MDA	340/24 336 (400-½)		340/26 336 (400-½)				
C CIRCLING	520-1 516 (600-1)		580-1½ 576 (600-1½)		600-2 596 (600-2)		