

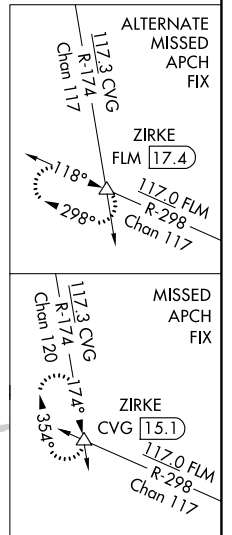
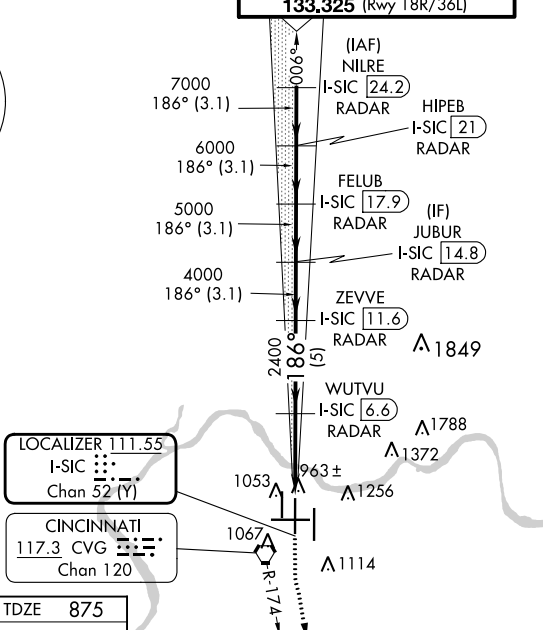
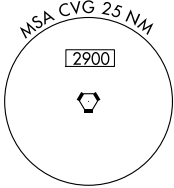
LOC/DME I-SIC <b>111.55</b> Chan <b>52 (Y)</b>	APP CRS <b>186°</b>	Rwy Idg TDZE <b>875</b> Apt Elev <b>896</b>	<b>11000</b>
--	------------------------	---	--------------

# ILS RWY 18C (SA CAT I & II)

CINCINNATI/NORTHERN KENTUCKY INTL (CVG)

<p>RADAR required for procedure entry. DME or RADAR required.</p> <p>Simultaneous approach authorized. SA CAT I: Requires specific OPSPEC, MSPEC, or LOA approval and use of HUD to DH. SA CAT II: Reduced Lighting: Requires specific OPSPEC, MSPEC, or LOA approval and use of autoland or HUD to touchdown.</p>		<p>MALSR</p>	<p>MISSED APPROACH: Climb to 1500 then climbing left turn to 3000 on CVG R-174 to ZIRKE INT/CVG 15.1 DME and hold.</p>
--	--	--------------	--

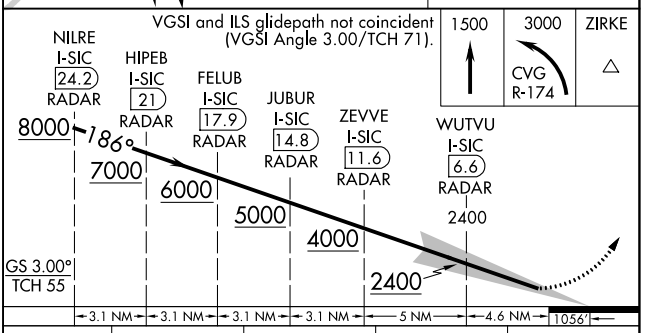
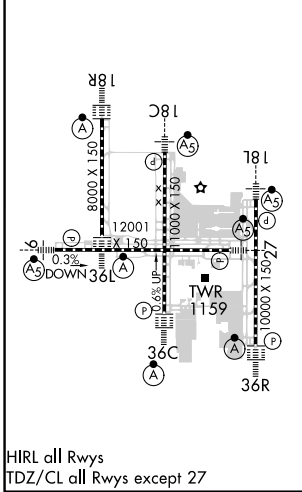
D-ATIS ARR <b>134.375</b> DEP <b>135.3</b>	CINCINNATI APP CON <b>119.7 363.15</b> (090°-269°) <b>123.875 363.15</b> (270°-089°)	CINCINNATI TOWER <b>118.975 360.85</b> (Rwy 18L/36R) <b>118.3</b> (Rwys 18C/36C, 09/27) <b>133.325</b> (Rwy 18R/36L)	GND CON <b>121.7</b>	CLNC DEL <b>127.175</b>	CPDLC
---	--	---	-------------------------	----------------------------	-------



**LOCALIZER 111.55**  
I-SIC [Symbol]  
Chan 52 (Y)

**CINCINNATI 117.3 CVG**  
Chan 120

ELEV 896	<b>D</b>	TDZE 875
----------	----------	----------



CATEGORY	A	B	C	D
S-ILS 18C	SA CAT I RA 191/16 150 DA 1025			
S-ILS 18C	SA CAT II RA 100/12 100 DA 975			

**SA CATEGORY I & II ILS-SPECIAL AIRCREW & AIRCRAFT CERTIFICATION REQUIRED**

SE-1, 08 AUG 2024 to 05 SEP 2024

SE-1, 08 AUG 2024 to 05 SEP 2024