

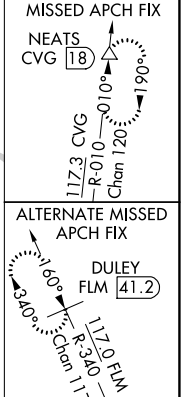
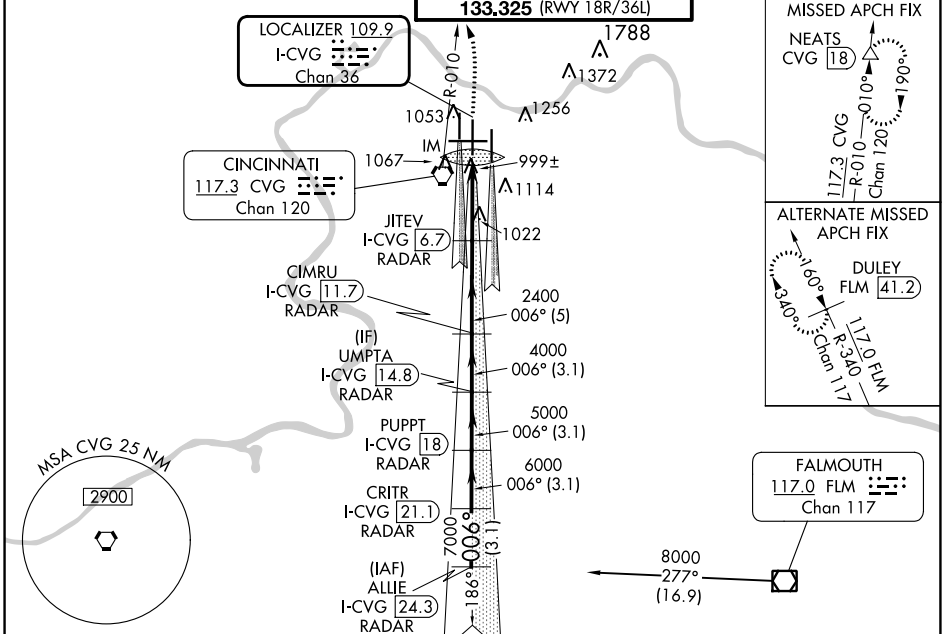
LOC/DME I-CVG <b>109.9</b> Chan 36	APP CRS <b>006°</b>	Rwy Idg TDZE Apt Elev <b>11000</b> <b>851</b> <b>896</b>
--	------------------------	---

# ILS RWY 36C (CAT II & III)

CINCINNATI/NORTHERN KENTUCKY INTL (CVG)

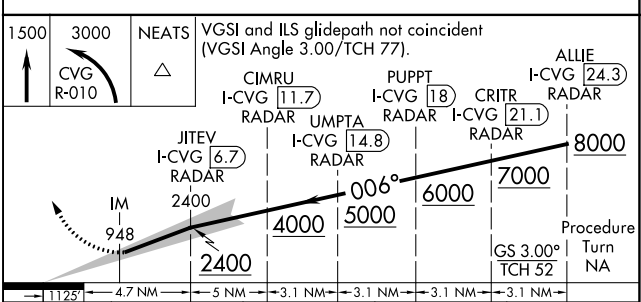
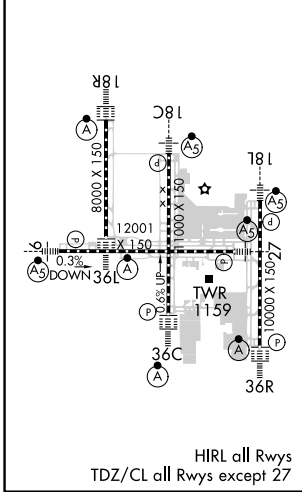
	Simultaneous approach authorized with Rwy 36L/R. DME required.		MISSED APPROACH: Climb to 1500 then climbing left turn to 3000 via CVG R-010 to NEATS Int/18 DME and hold.
--	---	--	--

D-ATIS ARR <b>134.375</b> DEP <b>135.3</b>	CINCINNATI APP CON <b>119.7 363.15</b> (090°-269°) <b>123.875 363.15</b> (270°-089°)	CINCINNATI TOWER <b>118.975 360.85</b> (RWY 18L/36R) <b>118.3</b> (RWYS 18C/36C, 09/27) <b>133.325</b> (RWY 18R/36L)	GND CON <b>121.7</b>	CLNC DEL <b>127.175</b>	CPDLC
---	--	---	-------------------------	----------------------------	-------



ELEV 896	<b>D</b>	TDZE 851
----------	----------	----------

## DME or RADAR REQUIRED



CATEGORY	A	B	C	D
S-ILS-36C	CAT II RA 134/12 100 DA 951			
S-ILS 36C	CAT IIIa		RVR 07	
S-ILS 36C	CAT IIIb		RVR 06	
S-ILS 36C	CAT IIIc		NA	

## CATEGORY II & III ILS - SPECIAL AIRCREW & AIRCRAFT CERTIFICATION REQUIRED

SE-1, 08 AUG 2024 to 05 SEP 2024

SE-1, 08 AUG 2024 to 05 SEP 2024