

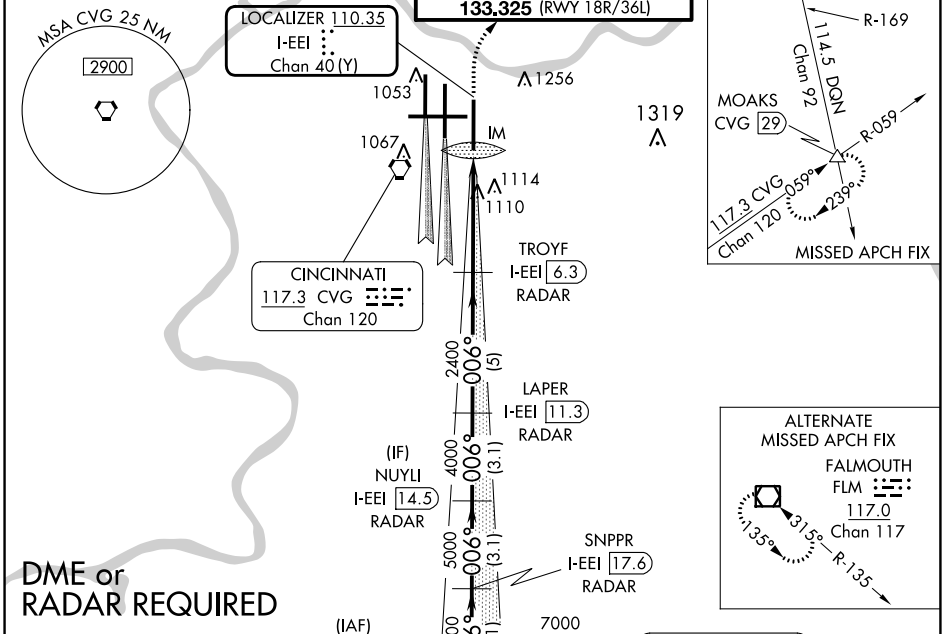
LOC/DME I-EEI 110.35 Chan 40 (Y)	APP CRS 006°	Rwy Idg TDZE Apt Elev 10000 896 896
---	------------------------	---

ILS RWY 36R (CAT II & III)

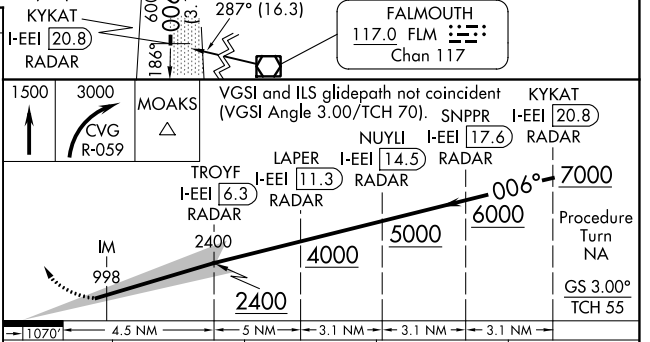
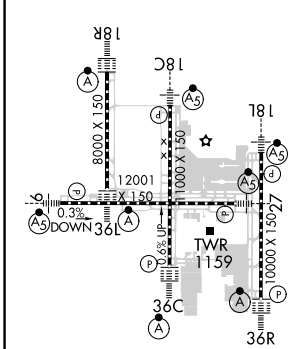
CINCINNATI/NORTHERN KENTUCKY INTL (CVG)

<p>Simultaneous approach authorized with Rwy 36C and 36L. DME or radar required.</p>	ALSIF-2 	MISSED APPROACH: Climb to 1500 then climbing right turn to 3000 via CVG R-059 to MOAKS Int/ CVG 29 DME and hold.

D-ATIS ARR 134.375 DEP 135.3	CINCINNATI APP CON 119.7 363.15 (090°-269°) 123.875 363.15 (270°-089°)	CINCINNATI TOWER 118.975 360.85 (RWY 18L/36R) 118.3 (RWYS 18C/36C, 09/27) 133.325 (RWY 18R/36L)	GND CON 121.7	CLNC DEL 127.175	CPDLC
---	--	---	-------------------------	----------------------------	-------



ELEV 896	D	TDZE 896
----------	----------	----------



11070'	4.5 NM	5 NM	3.1 NM	3.1 NM	3.1 NM
CATEGORY	A	B	C	D	
S-ILS 36R	CAT II RA 98/12 100 DA 996				
S-ILS 36R	CAT IIIa RVR 07				
S-ILS 36R	CAT IIIb RVR 06				
S-ILS 36R	CAT IIIc NA				

CATEGORY II & III ILS - SPECIAL AIRCREW & AIRCRAFT CERTIFICATION REQUIRED

SE-1, 08 AUG 2024 to 05 SEP 2024

SE-1, 08 AUG 2024 to 05 SEP 2024