

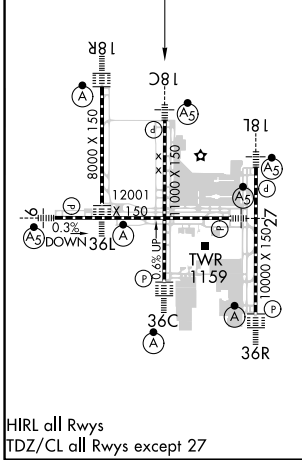
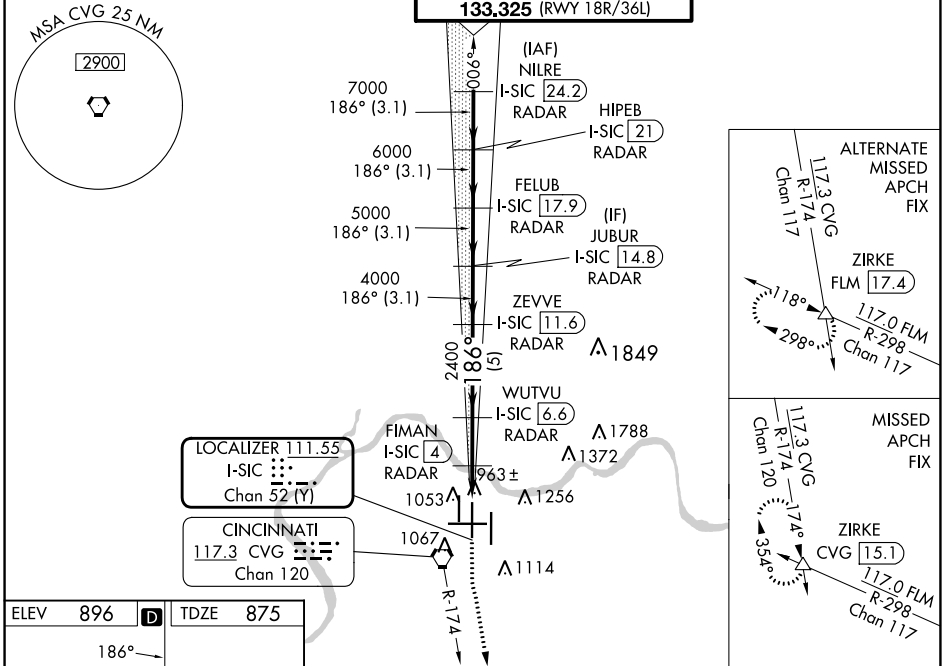
LOC/DME I-SIC 111.55 Chan 52 (Y)	APP CRS 186°	Rwy Idg 11000 TDZE 875 Apt Elev 896
--	------------------------	--

ILS or LOC RWY 18C

CINCINNATI/NORTHERN KENTUCKY INTL (CVG)

RADAR required for procedure entry. DME or RADAR required.	MALSR	MISSED APPROACH: Climb to 1500 then climbing left turn to 3000 on CVG R-174 to ZIRKE INT/CVG 15.1 DME and hold.
Simultaneous approach authorized.		

D-ATIS ARR 134.375 DEP 135.3	CINCINNATI APP CON 119.7 363.15 (090°-269°) 123.875 363.15 (270°-089°)	CINCINNATI TOWER 118.975 360.85 (RWY 18L/36R) 118.3 (RWYS 18C/36C, 09/27) 133.325 (RWY 18R/36L)	GND CON 121.7	CLNC DEL 127.175	CPDLC
---	--	---	-------------------------	----------------------------	-------



VGSi and ILS glidepath not coincident (VGSi Angle 3.00/TCH 71).		1500	3000	ZIRKE
		↑	↶	△
		* LOC only		
		CVG R-174		
		* I-SIC 3		
		* I-SIC 2		
		* I-SIC 1		
		* I-SIC 4		
		* I-SIC 6.6		
		* I-SIC 11.6		
		* I-SIC 14.8		
		* I-SIC 17.9		
		* I-SIC 21		
		* I-SIC 24.2		
		* I-SIC 3		
		* I-SIC 2		
		* I-SIC 1		
		* I-SIC 4		
		* I-SIC 6.6		
		* I-SIC 11.6		
		* I-SIC 14.8		
		* I-SIC 17.9		
		* I-SIC 21		
		* I-SIC 24.2		
		* I-SIC 3		
		* I-SIC 2		
		* I-SIC 1		
		* I-SIC 4		
		* I-SIC 6.6		
		* I-SIC 11.6		
		* I-SIC 14.8		
		* I-SIC 17.9		
		* I-SIC 21		
		* I-SIC 24.2		
		* I-SIC 3		
		* I-SIC 2		
		* I-SIC 1		
		* I-SIC 4		
		* I-SIC 6.6		
		* I-SIC 11.6		
		* I-SIC 14.8		
		* I-SIC 17.9		
		* I-SIC 21		
		* I-SIC 24.2		
		* I-SIC 3		
		* I-SIC 2		
		* I-SIC 1		
		* I-SIC 4		
		* I-SIC 6.6		
		* I-SIC 11.6		
		* I-SIC 14.8		
		* I-SIC 17.9		
		* I-SIC 21		
		* I-SIC 24.2		
		* I-SIC 3		
		* I-SIC 2		
		* I-SIC 1		
		* I-SIC 4		
		* I-SIC 6.6		
		* I-SIC 11.6		
		* I-SIC 14.8		
		* I-SIC 17.9		
		* I-SIC 21		
		* I-SIC 24.2		
		* I-SIC 3		
		* I-SIC 2		
		* I-SIC 1		
		* I-SIC 4		
		* I-SIC 6.6		
		* I-SIC 11.6		
		* I-SIC 14.8		
		* I-SIC 17.9		
		* I-SIC 21		
		* I-SIC 24.2		
		* I-SIC 3		
		* I-SIC 2		
		* I-SIC 1		
		* I-SIC 4		
		* I-SIC 6.6		
		* I-SIC 11.6		
		* I-SIC 14.8		
		* I-SIC 17.9		
		* I-SIC 21		
		* I-SIC 24.2		
		* I-SIC 3		
		* I-SIC 2		
		* I-SIC 1		
		* I-SIC 4		
		* I-SIC 6.6		
		* I-SIC 11.6		
		* I-SIC 14.8		
		* I-SIC 17.9		
		* I-SIC 21		
		* I-SIC 24.2		
		* I-SIC 3		
		* I-SIC 2		
		* I-SIC 1		
		* I-SIC 4		
		* I-SIC 6.6		
		* I-SIC 11.6		
		* I-SIC 14.8		
		* I-SIC 17.9		
		* I-SIC 21		
		* I-SIC 24.2		
		* I-SIC 3		
		* I-SIC 2		
		* I-SIC 1		
		* I-SIC 4		
		* I-SIC 6.6		
		* I-SIC 11.6		
		* I-SIC 14.8		
		* I-SIC 17.9		
		* I-SIC 21		
		* I-SIC 24.2		
		* I-SIC 3		
		* I-SIC 2		
		* I-SIC 1		
		* I-SIC 4		
		* I-SIC 6.6		
		* I-SIC 11.6		
		* I-SIC 14.8		
		* I-SIC 17.9		
		* I-SIC 21		
		* I-SIC 24.2		
		* I-SIC 3		
		* I-SIC 2		
		* I-SIC 1		
		* I-SIC 4		
		* I-SIC 6.6		
		* I-SIC 11.6		
		* I-SIC 14.8		
		* I-SIC 17.9		
		* I-SIC 21		
		* I-SIC 24.2		
		* I-SIC 3		
		* I-SIC 2		
		* I-SIC 1		
		* I-SIC 4		
		* I-SIC 6.6		
		* I-SIC 11.6		
		* I-SIC 14.8		
		* I-SIC 17.9		
		* I-SIC 21		
		* I-SIC 24.2		
		* I-SIC 3		
		* I-SIC 2		
		* I-SIC 1		
		* I-SIC 4		
		* I-SIC 6.6		
		* I-SIC 11.6		
		* I-SIC 14.8		
		* I-SIC 17.9		
		* I-SIC 21		
		* I-SIC 24.2		
		* I-SIC 3		
		* I-SIC 2		
		* I-SIC 1		
		* I-SIC 4		
		* I-SIC 6.6		
		* I-SIC 11.6		
		* I-SIC 14.8		
		* I-SIC 17.9		
		* I-SIC 21		
		* I-SIC 24.2		
		* I-SIC 3		
		* I-SIC 2		
		* I-SIC 1		
		* I-SIC 4		
		* I-SIC 6.6		
		* I-SIC 11.6		
		* I-SIC 14.8		
		* I-SIC 17.9		
		* I-SIC 21		
		* I-SIC 24.2		
		* I-SIC 3		
		* I-SIC 2		
		* I-SIC 1		
		* I-SIC 4		
		* I-SIC 6.6		
		* I-SIC 11.6		
		* I-SIC 14.8		
		* I-SIC 17.9		
		* I-SIC 21		
		* I-SIC 24.2		
		* I-SIC 3		
		* I-SIC 2		
		* I-SIC 1		
		* I-SIC 4		
		* I-SIC 6.6		
		* I-SIC 11.6		
		* I-SIC 14.8		
		* I-SIC 17.9		
		* I-SIC 21		
		* I-SIC 24.2		
		* I-SIC 3		
		* I-SIC 2		
		* I-SIC 1		
		* I-SIC 4		
		* I-SIC 6.6		
		* I-SIC 11.6		
		* I-SIC 14.8		
		* I-SIC 17.9		
		* I-SIC 21		
		* I-SIC 24.2		
		* I-SIC 3		
		* I-SIC 2		
		* I-SIC 1		
		* I-SIC 4		
		* I-SIC 6.6		
		* I-SIC 11.6		
		* I-SIC 14.8		
		* I-SIC 17.9		
		* I-SIC 21		
		* I-SIC 24.2		
		* I-SIC 3		
		* I-SIC 2		
		* I-SIC 1		
		* I-SIC 4		
		* I-SIC 6.6		
		* I-SIC 11.6		
		* I-SIC 14.8		
		* I-SIC 17.9		
		* I-SIC 21		
		* I-SIC 24.2		
		* I-SIC 3		
		* I-SIC 2		
		* I-SIC 1		
		* I-SIC 4		
		* I-SIC 6.6		
		* I-SIC 11.6		
		* I-SIC 14.8		
		* I-SIC 17.9		
		* I-SIC 21		
		* I-SIC 24.2		
		* I-SIC 3		
		* I-SIC 2		
		* I-SIC 1		
		* I-SIC 4		
		* I-SIC 6.6		
		* I-SIC 11.6		
		* I-SIC 14.8		
		* I-SIC 17.9		
		* I-SIC 21		
		* I-SIC 24.2		
		* I-SIC 3		
		* I-SIC 2		
		* I-SIC 1		
		* I-SIC 4		
		* I-SIC 6.6		
		* I-SIC 11.6		
		* I-SIC 14.8		
		* I-SIC 17.9		
		* I-SIC 21		
		* I-SIC 24.2		
		* I-SIC 3		
		* I-SIC 2		
		* I-SIC 1		
		* I-SIC 4		
		* I-SIC 6.6		
		* I-SIC 11.6		
		* I-SIC 14.8		
		* I-SIC 17.9		
		* I-SIC 21		
		* I-SIC 24.2		
		* I-SIC 3		
		* I-SIC 2		
		* I-SIC 1		
		* I-SIC 4		
		* I-SIC 6.6		
		* I-SIC 11.6		
		* I-SIC 14.8		
		* I-SIC 17.9		
		* I-SIC 21		
		* I-SIC 24.2		
		* I-SIC 3		
		* I-SIC 2		
		* I-SIC 1		
		* I-SIC 4		
		* I-SIC 6.6		
		* I-SIC 11.6		
		* I-SIC 14.8		
		* I-SIC 17.9		
		* I-SIC 21		
		* I-SIC 24.2		
		* I-SIC 3		
		* I-SIC 2		
		* I-SIC 1		
		* I-SIC 4		
		* I-SIC 6.6		
		* I-SIC 11.6		
		* I-SIC 14.8		
		* I-SIC 17.9		
		* I-SIC 21		
		* I-SIC 24.2		
		* I-SIC 3		
		* I-SIC 2		
		* I-SIC 1		
		* I-SIC 4		
		* I-SIC 6.6		
		* I-SIC 11.6		
		* I-SIC 14.8		
		* I-SIC 17.9		
		* I-SIC 21		
		* I-SIC 24.2		
		* I-SIC 3		
		* I-SIC 2		
		* I-SIC 1		
		* I-SIC 4		
		* I-SIC 6.6		
		* I-SIC 11.6		
		* I-SIC 14.8		
		* I-SIC 17.9		
		* I-SIC 21		
		* I-SIC 24.2		
		* I-SIC 3		
		* I-SIC 2		
		* I-SIC 1		
		* I-SIC 4		
		* I-SIC 6.6		
		* I-SIC 11.6		
		* I-SIC 14.8		
		* I-SIC 17.9		
		* I-SIC 21		
		* I-SIC 24.2		
		* I-SIC 3		
		* I-SIC 2		
		* I-SIC 1		
		* I-SIC 4		
		* I-SIC 6.6		
		* I-SIC 11.6		
		* I-SIC 14.8		
		* I-SIC 17.9		
		* I-SIC 21		
		* I-SIC 24.2		
		* I-SIC 3		
		* I-SIC 2		
		* I-SIC 1		
		* I-SIC 4		
		* I-SIC 6.6		
		* I-SIC 11.6		
		* I-SIC 14.8		
		* I-SIC 17.9		
		* I-SIC 21		
		* I-SIC 24.2		
		* I-SIC 3		
		* I-SIC 2		
		* I-SIC 1		
		* I-SIC 4		
		* I-SIC 6.6		
		* I-SIC 11.6		