

LOC I-JDP <b>108.7</b>	APP CRS <b>276°</b>	Rwy Idg TDZE Apt Elev	<b>12000</b> <b>875</b> <b>896</b>
---------------------------	------------------------	-----------------------------	--

# ILS or LOC RWY 27

## CINCINNATI/NORTHERN KENTUCKY INTL (CVG)

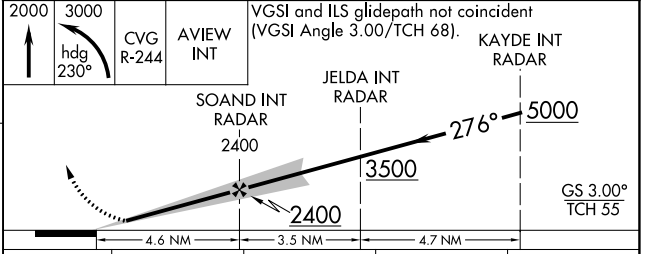
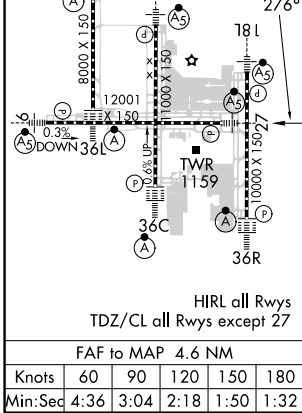
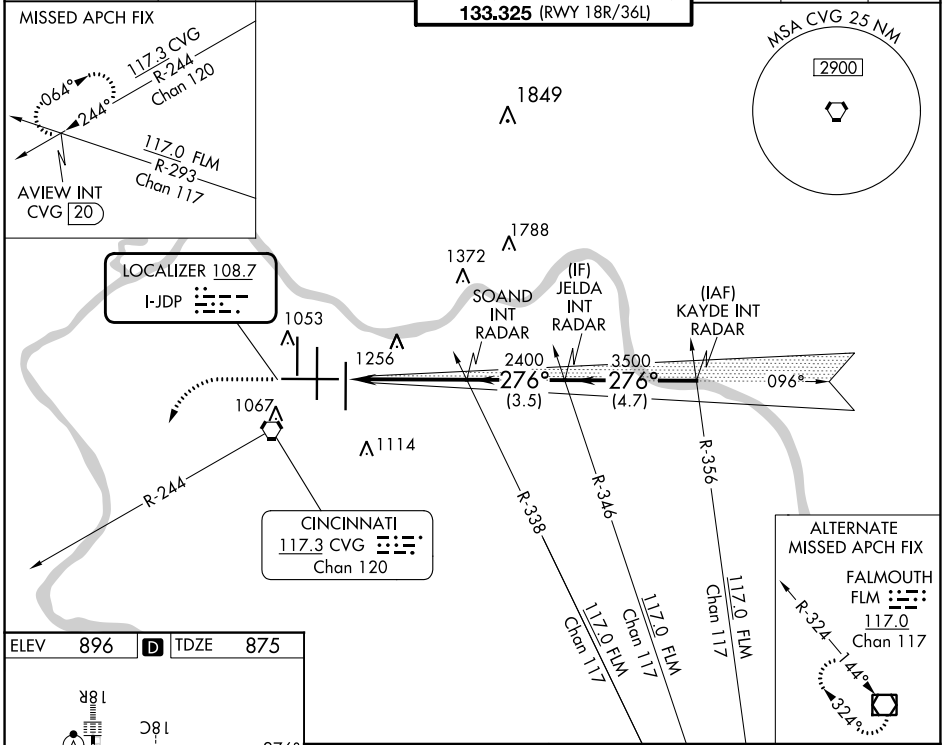
RADAR required for procedure entry.

For inop ALS, increase S-LOC 27 Cat C/D visibility to 1 3/8 SM.  
\*\* RVR 1800 authorized with use of FD or AP or HUD to DA.

**MALS**

MISSED APPROACH: Climb to 2000 then climbing left turn to 3000 on heading 230° and CVG R-244 to AVIEW INT/CVG 20 DME and hold.

D-ATIS ARR <b>134.375</b>	DEP <b>135.3</b>	CINCINNATI APP CON <b>119.7 363.15</b> (090°-269°) <b>123.875 363.15</b> (270°-089°)	CINCINNATI TOWER <b>118.975 360.85</b> (RWY 18L/36R) <b>118.3</b> (RWYS 18C/36C, 09/27) <b>133.325</b> (RWY 18R/36L)	GND CON <b>121.7</b>	CLNC DEL <b>127.175</b>	CPDLC
---------------------------------	---------------------	--	---	-------------------------	----------------------------	-------



CATEGORY	A	B	C	D
S-ILS 27 **	1075/24 200 (200-1/2)			
S-LOC 27	1340/24	465 (500-1/2)	1340/50	465 (500-1)
<input checked="" type="checkbox"/> CIRCLING	1460-1	564 (600-1)	1560-1 3/4 664 (700-1 3/4)	1560-2 664 (700-2)

SE-1, 08 AUG 2024 to 05 SEP 2024

SE-1, 08 AUG 2024 to 05 SEP 2024