

LOC/DME I-CVG <b>109.9</b> Chan 36	APP CRS <b>006°</b>	Rwy Idg <b>11000</b> TDZE <b>851</b> Apt Elev <b>896</b>
--	------------------------	--

# ILS or LOC RWY 36C

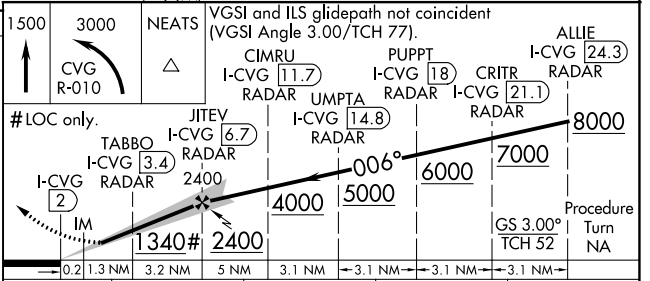
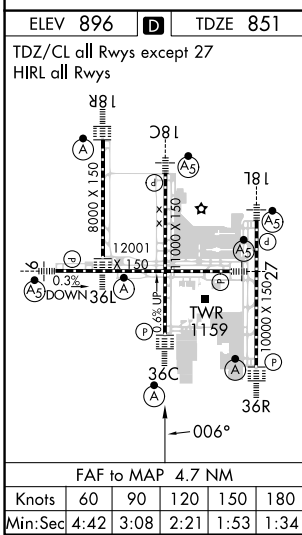
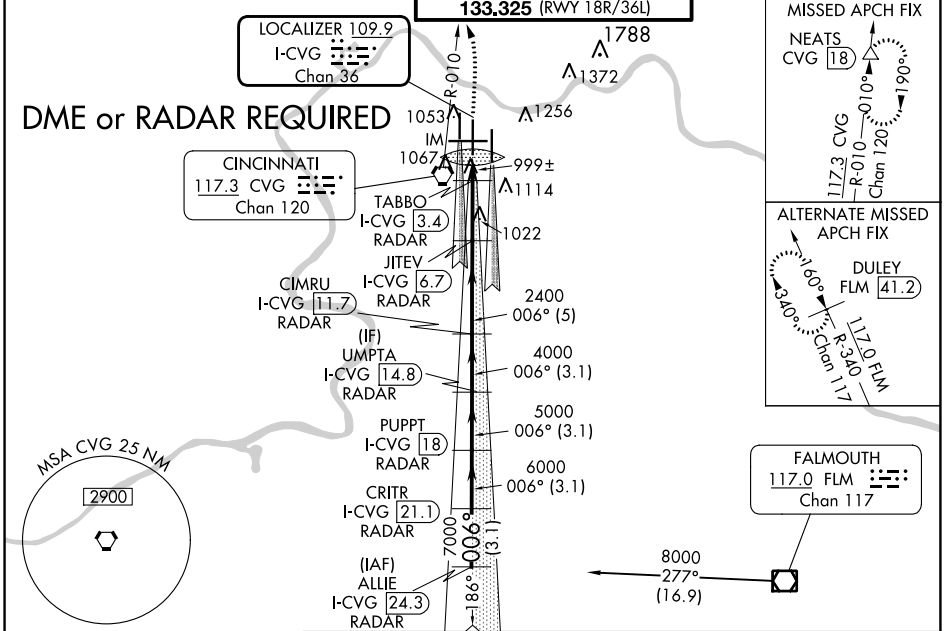
CINCINNATI/NORTHERN KENTUCKY INTL (CVG)

**Simultaneous approach authorized with Rwy 36L/R.**  
DME required.

ALSf-2

**MISSED APPROACH:** Climb to 1500 then climbing left turn to 3000 via CVG R-010 to NEATS/CVG 18 DME and hold.

D-ATIS ARR <b>134.375</b> DEP <b>135.3</b>	CINCINNATI APP CON <b>119.7 363.15</b> (090°-269°) <b>123.875 363.15</b> (270°-089°)	CINCINNATI TOWER <b>118.975 360.85</b> (RWY 18L/36R) <b>118.3</b> (RWYS 18C/36C, 09/27) <b>133.325</b> (RWY 18R/36L)	GND CON <b>121.7</b>	CLNC DEL <b>127.175</b>	CPDLC
---	--	---	-------------------------	----------------------------	-------



CATEGORY	A	B	C	D
S-ILS 36C	1051/18 200 (200-½)			
S-LOC 36C	1340/24	489 (500-½)	1340/50	489 (500-1)
CIRCLING	1460-1	564 (600-1)	1560-1¾ 664 (700-1¾)	1560-2 664 (700-2)
TABBO FIX MINIMUMS				
S-LOC 36C	1260/24	409 (400-½)	1260/40	409 (400-¾)
CIRCLING	1460-1	564 (600-1)	1560-1¾ 664 (700-1¾)	1560-2 664 (700-2)

SE-1, 08 AUG 2024 to 05 SEP 2024

SE-1, 08 AUG 2024 to 05 SEP 2024