

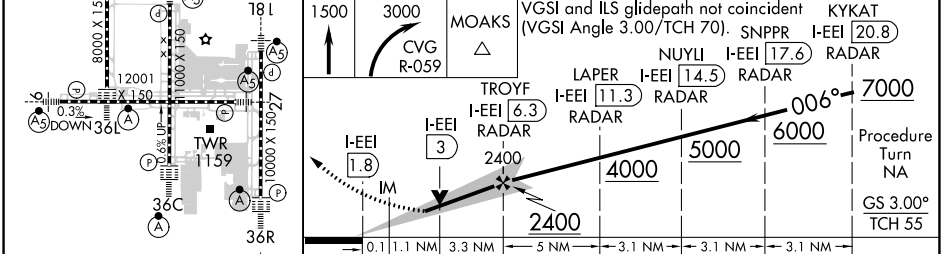
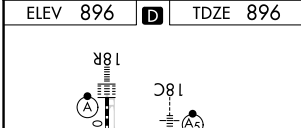
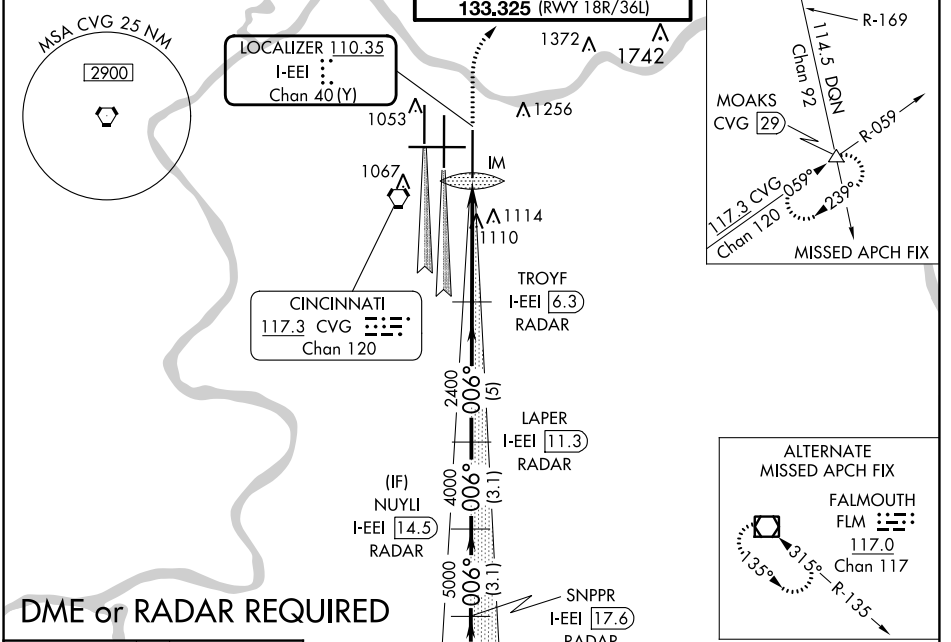
LOC/DME I-EEI 110.35 Chan 40 (Y)	APP CRS 006°	Rwy Idg 10000 TDZE 896 Apt Elev 896
--	------------------------	--

ILS or LOC RWY 36R

CINCINNATI/NORTHERN KENTUCKY INTL (CVG)

<p>Simultaneous approach authorized with Rwy 36C and 36L.</p> <p>DME or radar required.</p>	<p>ALSF-2</p>	<p>MISSED APPROACH: Climb to 1500 then climbing right turn to 3000 via CVG R-059 to MOAKS Int/ CVG 29 DME and hold.</p>
---	---------------	--

D-ATIS ARR 134.375 DEP 135.3	CINCINNATI APP CON 119.7 363.15 (090°-269°) 123.875 363.15 (270°-089°)	CINCINNATI TOWER 118.975 360.85 (RWY 18L/36R) 118.3 (RWYS 18C/36C, 09/27) 133.325 (RWY 18R/36L)	GND CON 121.7	CLNC DEL 127.175	CPDLC
---	--	---	-------------------------	----------------------------	-------



TDZ/CL all Rwys except 27 HIRL all Rwys	FAF to MAP 4.5 NM	Knots 60 90 120 150 180			
		Min:Sec 4:30 3:00 2:15 1:48 1:30			
CATEGORY	A	B	C	D	
S-ILS 36R	1096/18		200 (200-1/2)		
S-LOC 36R	1360/24	464 (500-1/2)	1360/50	464 (500-1)	
CIRCLING	1460-1	564 (600-1)	1560-1 3/4 664 (700-1 3/4)	1560-2 664 (700-2)	

SE-1, 08 AUG 2024 to 05 SEP 2024

SE-1, 08 AUG 2024 to 05 SEP 2024