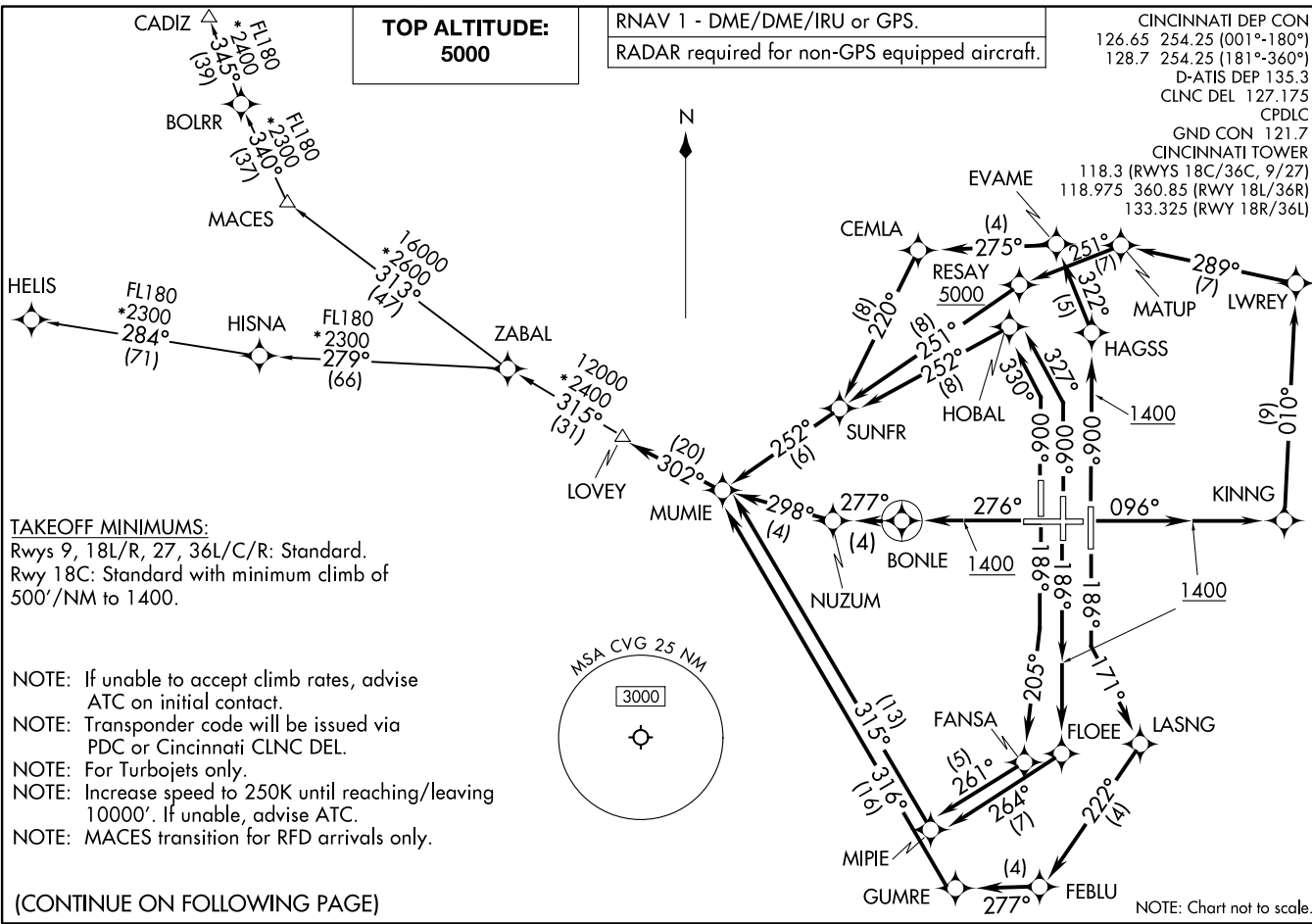


LOVEY SEVEN DEPARTURE (RNAV)
(LOVEY7.LOVEY) 21MAR24

CINCINNATI/NORTHERN KENTUCKY INTL (CVG)
COVINGTON, KENTUCKY

(LOVEY7.LOVEY) 24081
LOVEY SEVEN DEPARTURE (RNAV)

CINCINNATI/NORTHERN KENTUCKY INTL (CVG)
AL-655 (FAA)
COVINGTON, KENTUCKY



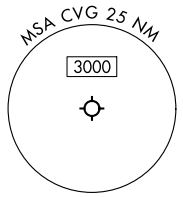
TOP ALTITUDE:
5000

RNAV 1 - DME/DME/IRU or GPS.
RADAR required for non-GPS equipped aircraft.

CINCINNATI DEP CON
126.65 254.25 (001°-180°)
128.7 254.25 (181°-360°)
D-ATIS DEP 135.3
CLNC DEL 127.175
CPDLC
GND CON 121.7
CINCINNATI TOWER
118.3 (RWYS 18C/36C, 9/27)
118.975 360.85 (RWY 18L/36R)
133.325 (RWY 18R/36L)

TAKEOFF MINIMUMS:
Rwys 9, 18L/R, 27, 36L/C/R: Standard.
Rwy 18C: Standard with minimum climb of
500'/NM to 1400.

- NOTE: If unable to accept climb rates, advise ATC on initial contact.
- NOTE: Transponder code will be issued via PDC or Cincinnati CLNC DEL.
- NOTE: For Turbojets only.
- NOTE: Increase speed to 250K until reaching/leaving 10000'. If unable, advise ATC.
- NOTE: MACES transition for RFD arrivals only.



(CONTINUE ON FOLLOWING PAGE)

NOTE: Chart not to scale.



DEPARTURE ROUTE DESCRIPTION

TAKEOFF RUNWAY 9: Climb on heading 096° to 1400, then direct KINNG, then on track 010° to LWREY, then on track 289° to MATUP, then on track 251° to cross RESAY at or above 5000, then on track 251° to SUNFR, then on track 252° to MUMIE, thence. . . .

TAKEOFF RUNWAY 18L: Climb on heading 186° to intercept course 171° to LASNG, then on track 222° to FEBLU, then on track 277° to GUMRE, then track 316° to MUMIE, thence. . . .

TAKEOFF RUNWAY 18C: Climb on heading 186° to 1400, then direct FLOEE, then on track 264° to MIPIE, then track to 315° to MUMIE, thence. . . .

TAKEOFF RUNWAY 18R: Climb on heading 186° to intercept course 205° to FANSA, then on track 261° to MIPIE, then on track 315° to MUMIE, thence. . . .

TAKEOFF RUNWAY 27: Climb on heading 276° to 1400, then direct BONLE, then on track 277° to NUZUM, then on track 298° to MUMIE, thence. . . .

TAKEOFF RUNWAY 36L: Climb on heading 006° to intercept course 330° to HOBAL, then on track 252° to SUNFR, then on track 252° to MUMIE, thence. . . .

TAKEOFF RUNWAY 36C: Climb on heading 006° to intercept course 327° to HOBAL, then on track 252° to SUNFR, then on track 252° to MUMIE, thence. . . .

TAKEOFF RUNWAY 36R: Climb on heading 006° to 1400, then direct HAGSS, then on track 322° to EVAME, then on track 275° to CEMLA, then on track 220° to SUNFR, then on track 252° to MUMIE, thence. . . .

. . . . on depicted route to LOVEY. Maintain 5000. Expect clearance to filed altitude within 10 minutes after departure.

CADIZ TRANSITION (LOVEY7.CADIZ):

HELIS TRANSITION (LOVEY7.HELIS):

MACES TRANSITION (LOVEY7.MACES):

SE-1, 08 AUG 2024 to 05 SEP 2024

SE-1, 08 AUG 2024 to 05 SEP 2024