

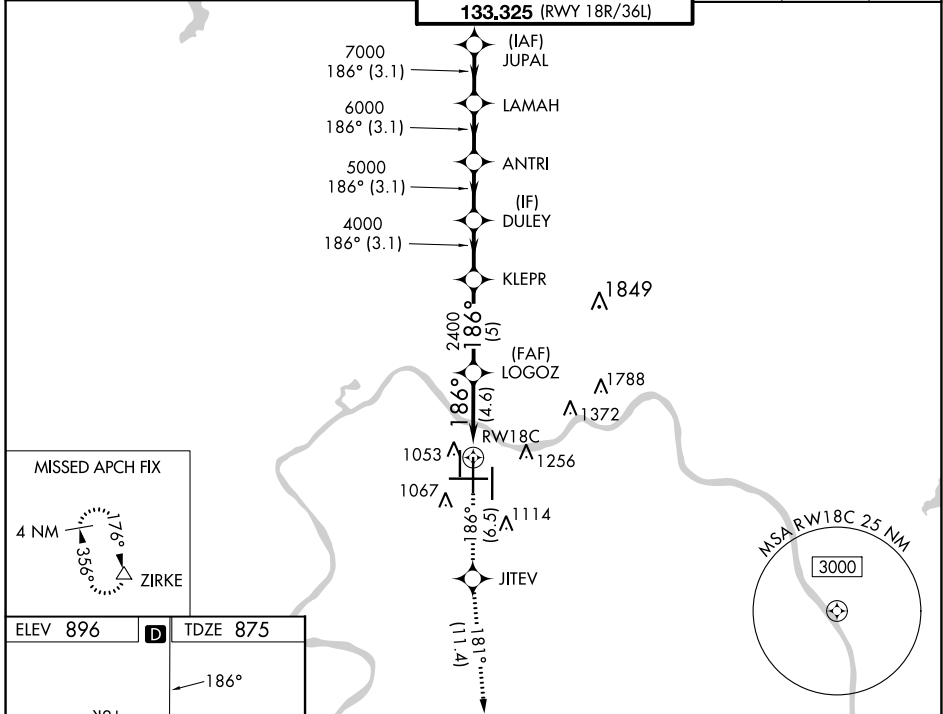
APP CRS	Rwy Idg	<b>11000</b>
<b>186°</b>	TDZE	<b>875</b>
	Apt Elev	<b>896</b>

# RNAV (RNP) Z RWY 18C

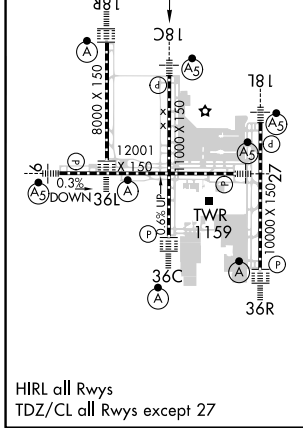
CINCINNATI/NORTHERN KENTUCKY INTL (CVG)

RNP AR APCH - GPS.		MALSR	MISSED APPROACH: Climb to 3000 on track 186° to JITEV and on track 181° to ZIRKE and hold.	
▼ Simultaneous approach authorized. For uncompensated Baro-VNAV systems, procedure NA below -17°C or above 54°C. For inop ALS, increase RNP 0.15 and RNP 0.30 all Cats visibility to 1½ SM.				

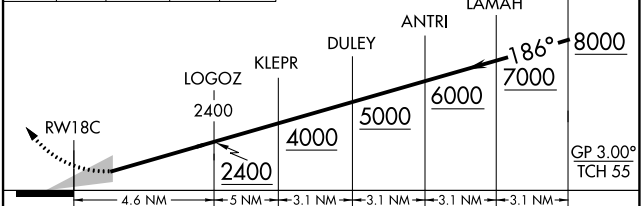
D-ATIS	CINCINNATI APP CON	CINCINNATI TOWER	GND CON	CLNC DEL	CPDLC
ARR <b>134.375</b> DEP <b>135.3</b>	<b>119.7 363.15</b> (090°-269°) <b>123.875 363.15</b> (270°-089°)	<b>118.975 360.85</b> (RWY 18L/36R) <b>118.3</b> (RWYS 18C/36C, 09/27) <b>133.325</b> (RWY 18R/36L)	<b>121.7</b>	<b>127.175</b>	



ELEV 896	<b>D</b>	TDZE 875
----------	----------	----------



3000	JITEV	ZIRKE	VGSI and RNAV glidepath not coincident (VGSI Angle 3.00/TCH 71).
↑	tr 186°	tr 181°	



CATEGORY	A	B	C	D
RNP 0.15 DA		1323/45	448 (500-7%)	
RNP 0.30 DA		1391/55	516 (500-1)	

**AUTHORIZATION REQUIRED**

SE-1, 08 AUG 2024 to 05 SEP 2024

SE-1, 08 AUG 2024 to 05 SEP 2024