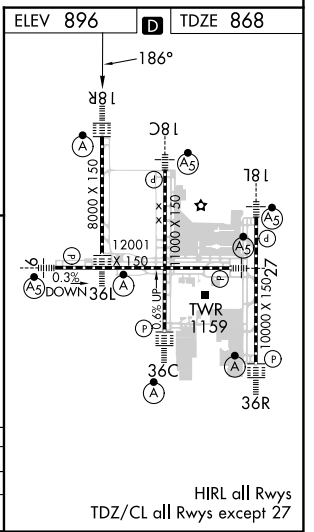
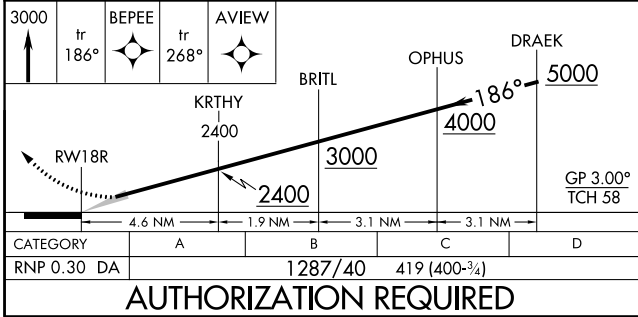
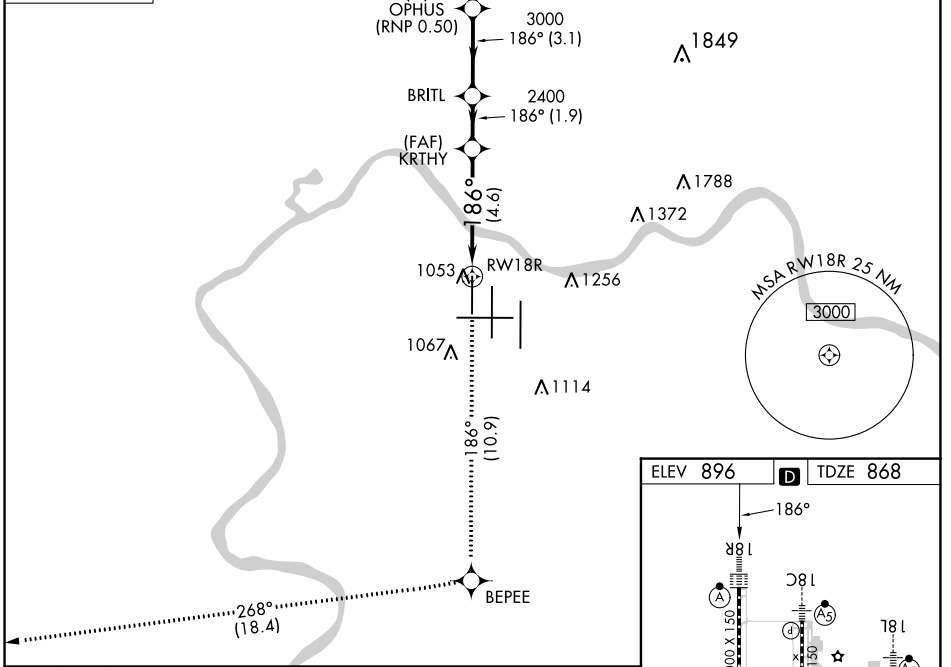
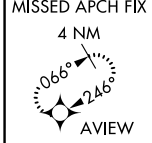


APP CRS	Rwy Idg	<b>8000</b>
<b>186°</b>	TDZE	<b>868</b>
	Apt Elev	<b>896</b>

# RNAV (RNP) Z RWY 18R

CINCINNATI/NORTHERN KENTUCKY INTL (CVG)

RNP AR APCH - GPS.		ALSF-2 	MISSED APPROACH: Climb to 3000 on track 186° BEPEE and on track 268° to AVIEW and hold.		
Use of FD or AP required during simultaneous operations. Simultaneous approach authorized with Rwy 18C/L. For uncompensated Baro-VNAV systems, procedure NA below -17°C or above 54°C. For inop ALS, increase RNP 0.30 all Cats visibility to RVR 6000.			GND CON <b>121.7</b>	CLNC DEL <b>127.175</b>	CPDLC



COVINGTON, KENTUCKY  
 Orig-D 24MAR22

CINCINNATI/NORTHERN KENTUCKY INTL (CVG)  
 39°03'N-84°40'W

## RNAV (RNP) Z RWY 18R

SE-1, 08 AUG 2024 to 05 SEP 2024

SE-1, 08 AUG 2024 to 05 SEP 2024

**AUTHORIZATION REQUIRED**

HIRL all Rws  
TDZ/CL all Rws except 27