

APP CRS	Rwy Idg	12000
276°	TDZE	875
	Apt Elev	896

RNAV (RNP) Z RWY 27

CINCINNATI/NORTHERN KENTUCKY INTL (CVG)

RNP AR APCH - GPS

▽ For uncompensated Baro-VNAV systems, procedure NA below -16° C or above 54° C. For inop ALS, increase RNP 0.23 all Cats visibility to 1½ SM and increase RNP 0.30 all Cats visibility to 1¾ SM.

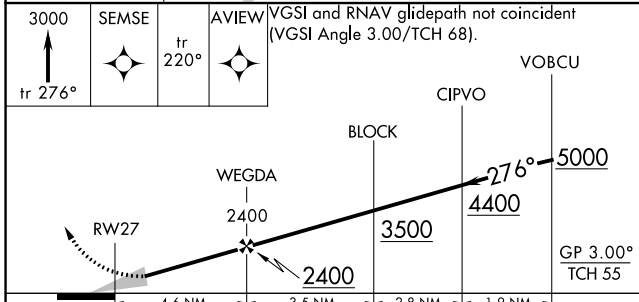
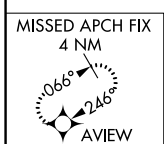
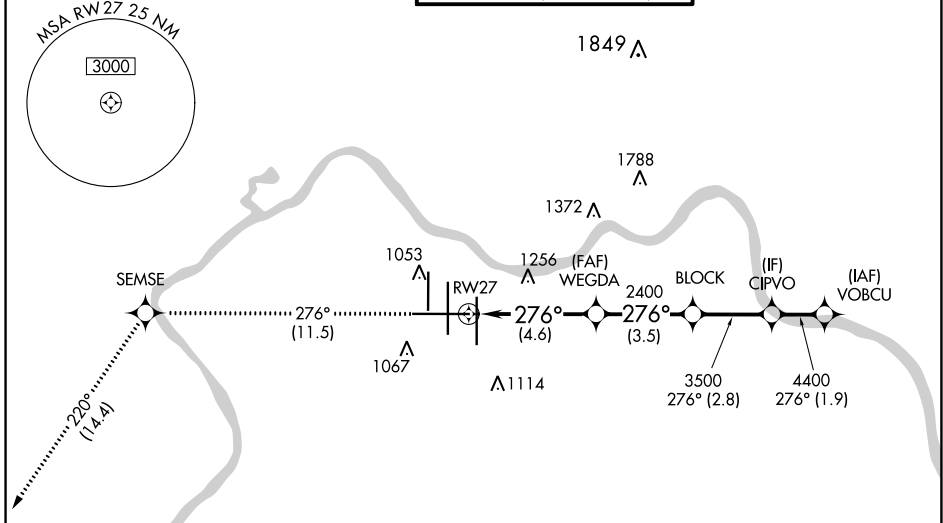
△ NA

MALSR

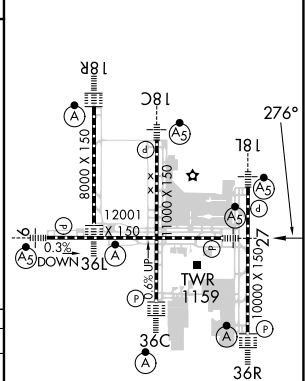


MISSED APPROACH: Climb to 3000 on track 276° SEMSE and on track 220° to AVIEW and hold.

D-ATIS		CINCINNATI APP CON		CINCINNATI TOWER		GND CON	CLNC DEL	CPDLC
ARR	DEP	119.7	363.15 (090°-269°)	118.975	360.85 (RWY 18L/36R)	121.7	127.175	
134.375	135.3	123.875	363.15 (270°-089°)	118.3	(RWYS 18C/36C, 09/27)			
				133.325	(RWY 18R/36L)			



ELEV 896	D	TDZE 875
----------	----------	----------



CATEGORY	A	B	C	D
RNP 0.15 DA		1296/40	421 (500-¾)	
RNP 0.23 DA		1378/55	503 (500-1)	
RNP 0.30 DA		1445-1¼	570 (600-1¼)	

AUTHORIZATION REQUIRED

HIRL all Rwys
TDZ/CL all Rwys except 27

SE-1, 08 AUG 2024 TO 05 SEP 2024

SE-1, 08 AUG 2024 TO 05 SEP 2024