

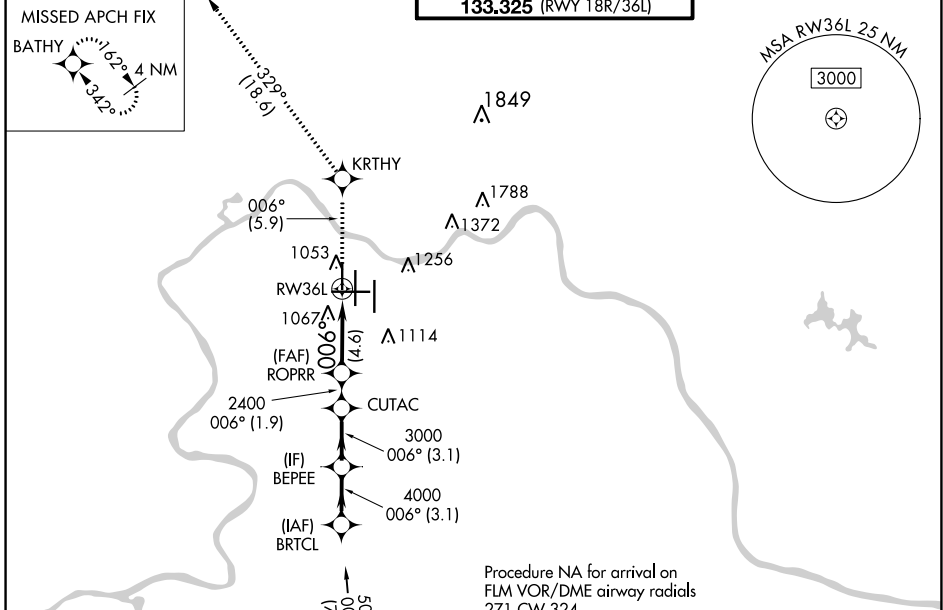
APP CRS	Rwy Idg	8000
006°	TDZE	873
	Apt Elev	896

RNAV (RNP) Z RWY 36L

CINCINNATI/NORTHERN KENTUCKY INTL (CVG)

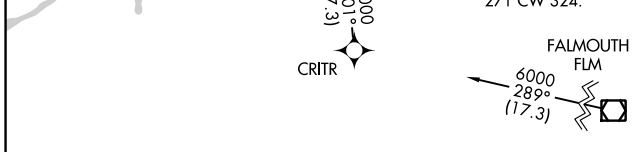
RNP AR APCH - GPS.	ALSF-2	MISSED APPROACH: Climb to 3000 on track 006° to KRTHY and track 329° to BATHY and hold.
Simultaneous approach authorized. For uncompensated Baro-VNAV systems, procedure NA below -17°C or above 54°C.		

D-ATIS	CINCINNATI APP CON	CINCINNATI TOWER	GND CON	CLNC DEL	CPDLC
ARR DEP	119.7 363.15 (090°-269°)	118.975 360.85 (RWY 18L/36R)	121.7	127.175	
134.375 135.3	123.875 363.15 (270°-089°)	118.3 (RWYS 18C/36C, 09/27)			
		133.325 (RWY 18R/36L)			

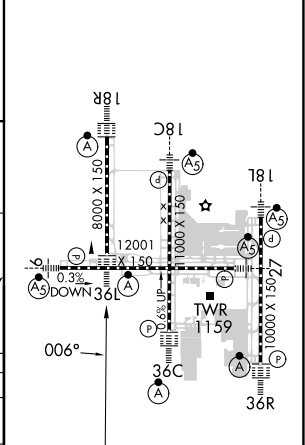
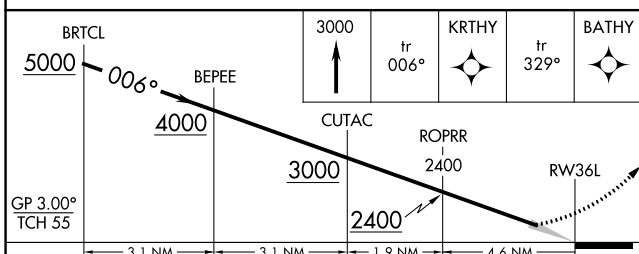


SE-1, 08 AUG 2024 to 05 SEP 2024

SE-1, 08 AUG 2024 to 05 SEP 2024



ELEV 896	D	TDZE 873
----------	----------	----------



CATEGORY	A	B	C	D
RNP 0.30 DA		1264/35	391 (400-5%)	

AUTHORIZATION REQUIRED

HIRL all Rwy's
TDZ/CL all Rwy's except 27