

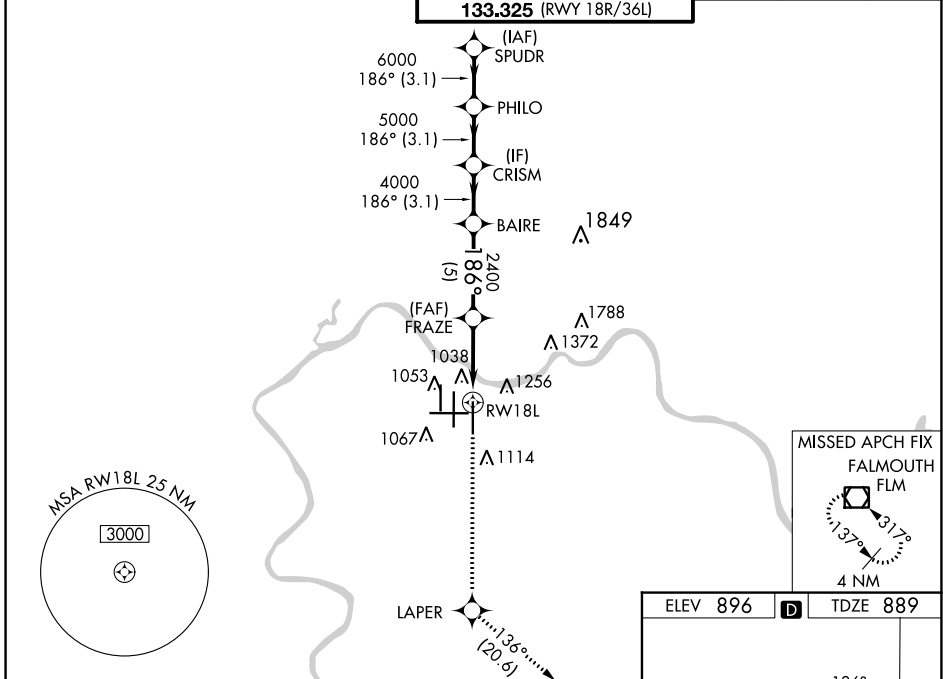
WAAS CH 40103 W18A	APP CRS 186°	Rwy Idg 10000 TDZE 889 Apt Elev 896
--	------------------------	--

RNAV (GPS) Y RWY 18L

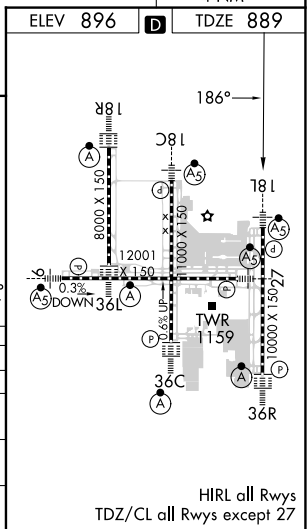
CINCINNATI/NORTHERN KENTUCKY INTL (CVG)

RADAR required for procedure entry. RNP APCH - GPS.		MALSR 	MISSED APPROACH: Climb to 3000 direct LAPER and on track 136° to FLM VOR/DME and hold.
For uncompensated Baro-VNAV systems, LNAV/VNAV NA below -17°C or above 54°C. Simultaneous approach authorized with Rwy 18C/R. LNAV procedure NA during simultaneous operations. Use of FD or AP required during simultaneous operations. For inop ALS, increase LNAV/VNAV all Cats and LNAV Cat C/D visibility to 1 3/8 SM.			

D-ATIS ARR 134.375 DEP 135.3	CINCINNATI APP CON 119.7 363.15 (090°-269°) 123.875 363.15 (270°-089°)	CINCINNATI TOWER 118.975 360.85 (RWY 18L/36R) 118.3 (RWYS 18C/36C, 09/27) 133.325 (RWY 18R/36L)	GN D CON 121.7	CLNC DEL 127.175	CPDLC
---	--	---	--------------------------	----------------------------	-------



3000	LAPER	FLM	VGSi and RNAV glidepath not coincident (VGSi Angle 3.00/TCH 71).	
↑			tr 136°	
RWY 18L (1.3 NM to RWY 18R) → FRAZE (2400) → BAIRE (4000) → CRISM (5000) → PHILO (6000) → SPUDR (7000)				
GP 3.00° TCH 55				
1.3 NM	3.3 NM	5 NM	3.1 NM	3.1 NM
CATEGORY	A	B	C	D
LPV DA		1089/18	200 (200-1/2)	
LNAV/VNAV DA		1395/55	506 (500-1)	
LNAV MDA	1360/24	471 (500-1/2)	1360/50	471 (500-1)
C CIRCLING	1460-1	564 (600-1)	1560-1 3/4 664 (700-1 3/4)	1560-2 664 (700-2)



SE-1, 08 AUG 2024 to 05 SEP 2024

SE-1, 08 AUG 2024 to 05 SEP 2024