

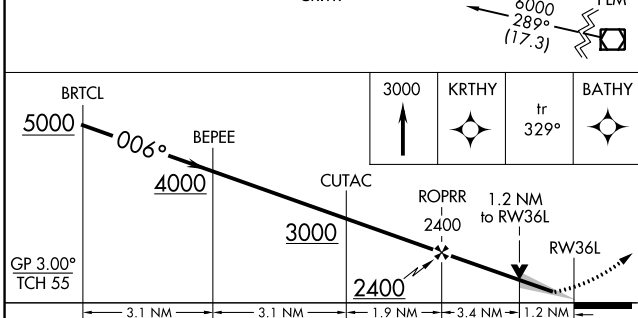
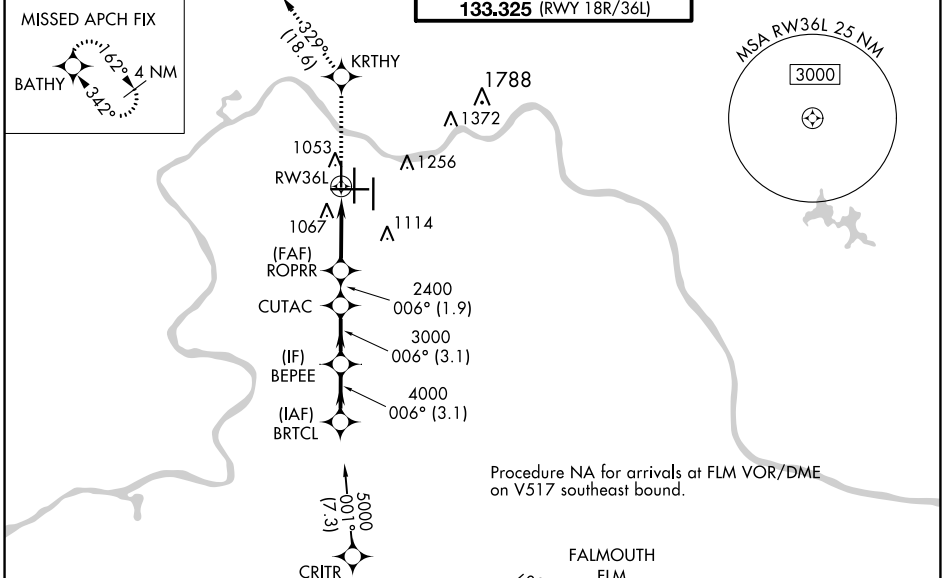
WAAS CH <b>49099</b> <b>W36A</b>	APP CRS <b>006°</b>	Rwy Idg TDZE Apt Elev	<b>8000</b> <b>873</b> <b>896</b>
--	------------------------	-----------------------------	---

# RNAV (GPS) Y RWY 36L

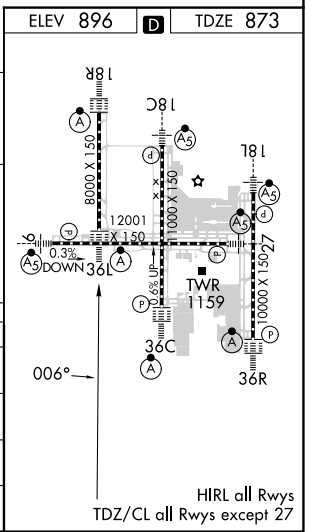
CINCINNATI/NORTHERN KENTUCKY INTL (CVG)

RNP APCH - GPS.	ALSf-2	MISSED APPROACH: Climb to 3000 direct KRTHY and on 329° track to BATHY and hold.
▼ For uncompensated Baro-VNAV systems, LNAV/VNAV NA below -16°C or above 54°C. Simultaneous approach authorized with Rwy 36C/R. LNAV procedure NA during simultaneous operations. Use of FD or AP providing RNAV track guidance required during simultaneous operations.		

D-ATIS ARR <b>134.375</b> DEP <b>135.3</b>	CINCINNATI APP CON <b>119.7 363.15</b> (090°-269°) <b>123.875 363.15</b> (270°-089°)	CINCINNATI TOWER <b>118.975 360.85</b> (RWY 18L/36R) <b>118.3</b> (RWYS 18C/36C, 09/27) <b>133.325</b> (RWY 18R/36L)	GND CON <b>121.7</b>	CLNC DEL <b>127.175</b>	CPDLC
---	--	---	-------------------------	----------------------------	-------



CATEGORY	A	B	C	D
LPV DA		1073/18	200 (200-½)	
LNAV/VNAV DA		1383/55	510 (500-1)	
LNAV MDA	1300/24	427 (500-½)	1300/40	427 (500-¾)
CIRCLING	1460-1	564 (600-1)	1560-1¾ 664 (700-1¾)	1560-2 664 (700-2)



SE-1, 08 AUG 2024 to 05 SEP 2024

SE-1, 08 AUG 2024 to 05 SEP 2024