

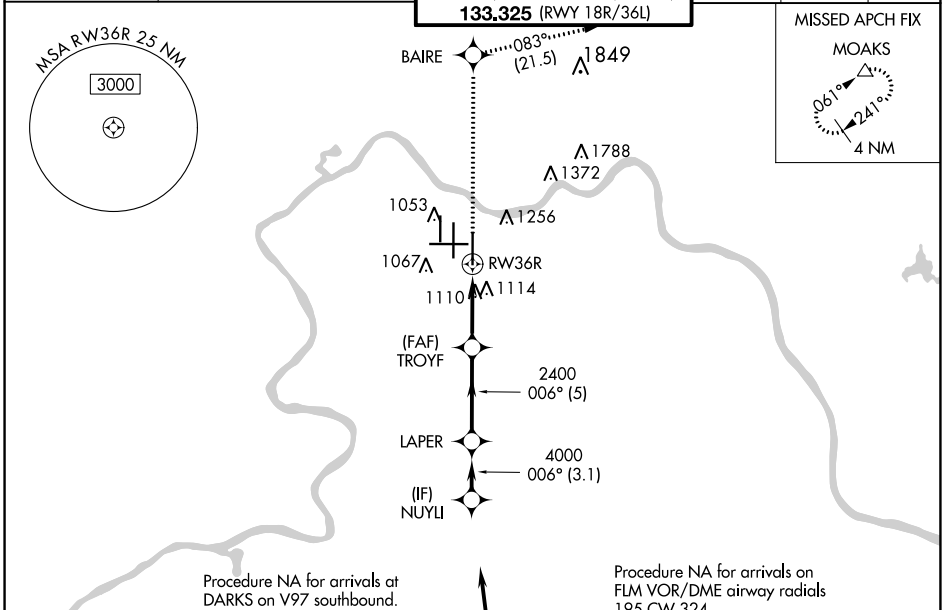
WAAS CH <b>42709</b>	APP CRS <b>006°</b>	Rwy Idg TDZE Apt Elev	<b>10000</b> <b>896</b> <b>896</b>
<b>W36D</b>			

# RNAV (GPS) Y RWY 36R

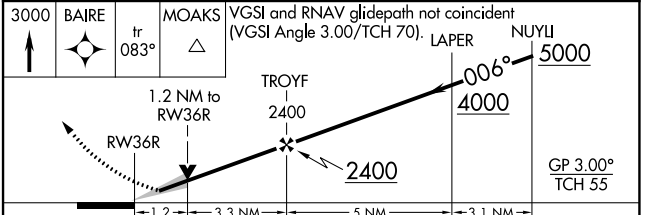
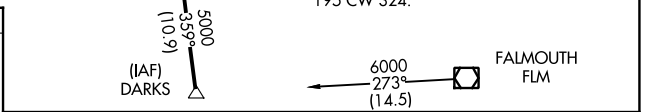
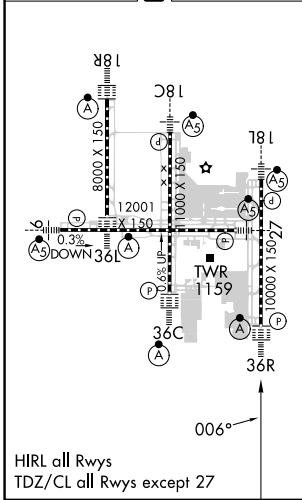
CINCINNATI/NORTHERN KENTUCKY INTL (CVG)

RNP APCH - GPS.		ALSF-2 A	MISSED APPROACH: Climb to 3000 direct BAIRE and on 083° track to MOAKS and hold.	
<p>For uncompensated Baro-VNAV systems, LNAV/VNAV NA below -16°C or above 54°C. Simultaneous approach authorized with Rwy 36L/C. LNAV procedure NA during simultaneous operations. Use of FD or AP providing RNAV track guidance required during simultaneous operations.</p>				

D-ATIS ARR <b>134.375</b> DEP <b>135.3</b>	CINCINNATI APP CON <b>119.7 363.15</b> (090°-269°)	CINCINNATI TOWER <b>118.975 360.85</b> (RWY 18L/36R) <b>118.3</b> (RWYS 18C/36C, 09/27) <b>133.325</b> (RWY 18R/36L)	GND CON <b>121.7</b>	CLNC DEL <b>127.175</b>	CPDLC
---	---	---	-------------------------	----------------------------	-------



ELEV 896	<b>D</b>	TDZE 896
----------	----------	----------



CATEGORY	A	B	C	D
LPV DA	1096/18 200 (200-½)			
LNAV/VNAV DA	1340/45 444 (500-¾)			
LNAV MDA	1360/24 464 (500-½)	1360/50 464 (500-1)		
CIRCLING	1460-1 564 (600-1)	1560-1¾ 664 (700-1¾)	1560-2 664 (700-2)	

SE-1, 08 AUG 2024 to 05 SEP 2024

SE-1, 08 AUG 2024 to 05 SEP 2024