

(FLG1.OATES) 23334

FLAGSTAFF ONE DEPARTURE

AL-5034 (FAA)


FLAGSTAFF PULLIAM (F'L'G)
FLAGSTAFF, ARIZONA

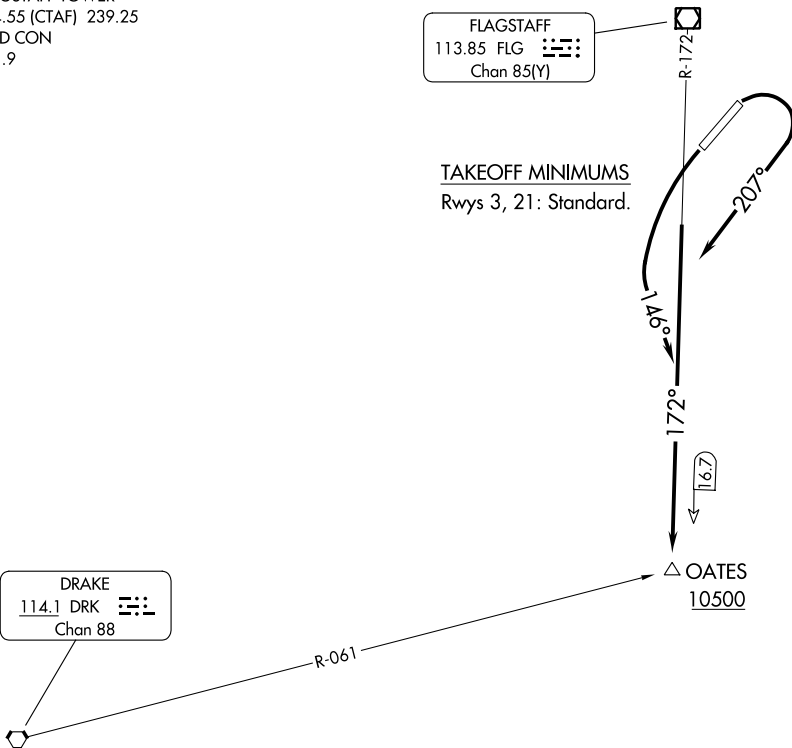
ATIS
125.8
PHOENIX DEP CON
126.375 236.775
FLAGSTAFF TOWER ★
134.55 (CTAF) 239.25
GND CON
121.9

**TOP ALTITUDE:
12000**

FLAGSTAFF
113.85 FLG 
Chan 85(Y)

TAKEOFF MINIMUMS
Rwys 3, 21: Standard.

DRAKE
114.1 DRK 
Chan 88



SW-4, 08 AUG 2024 to 05 SEP 2024

SW-4, 08 AUG 2024 to 05 SEP 2024

NOTE: Chart not to scale.



DEPARTURE ROUTE DESCRIPTION

TAKEOFF RUNWAY 3: Climbing right turn heading 207° and FLG R-172 to OATES INT, cross at or above 10500, thence. . . .

TAKEOFF RUNWAY 21: Climbing left turn heading 146° and FLG R-172 to OATES INT, cross at or above 10500, thence. . . .

. . . .as assigned by ATC, continue climb to MEA/MCA for direction of flight.

FLAGSTAFF ONE DEPARTURE
(FLG1.OATES) 07DEC17

FLAGSTAFF, ARIZONA
FLAGSTAFF PULLIAM (F'L'G)