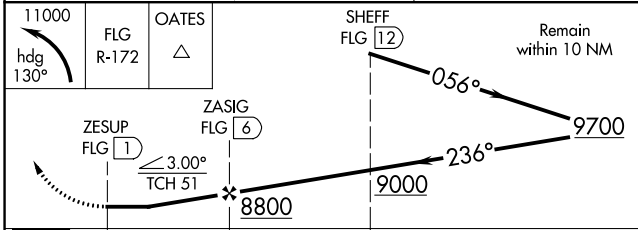
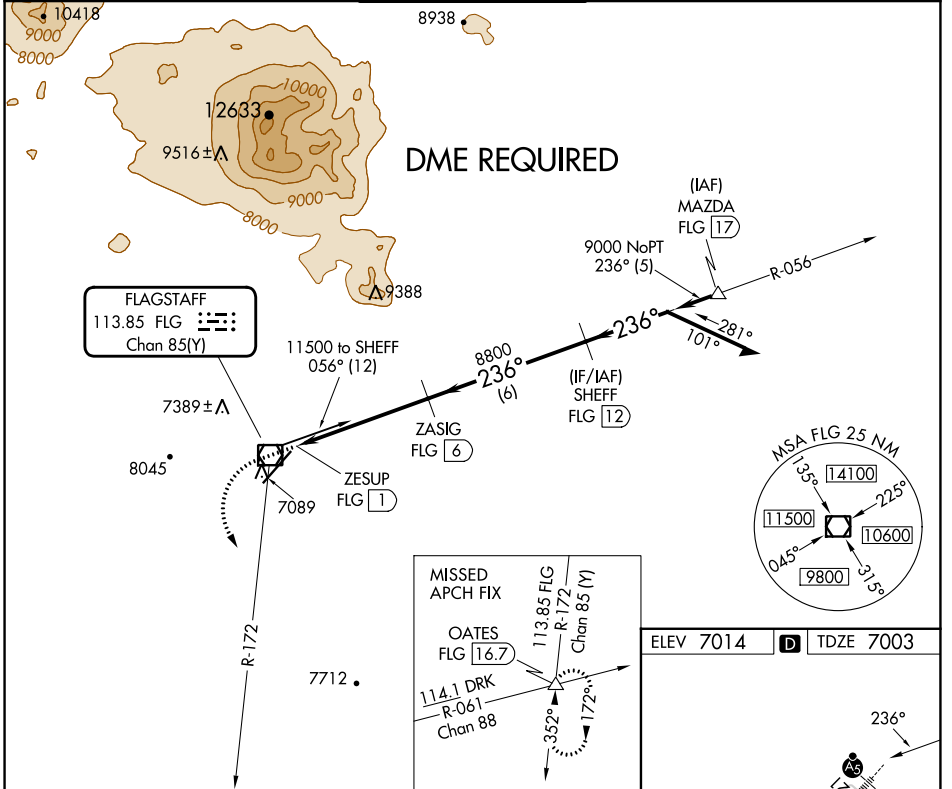


VOR/DME FLG 113.85 Chan 85(Y)	APP CRS 236°	Rwy Idg 7000 TDZE 7003 Apt Elev 7014
---	------------------------	---

VOR RWY 21

FLAGSTAFF PULLIAM (FLG)

	Rwy 21 helicopter visibility reduction below 1 SM NA. DME required. Inop table does not apply to S-21 Cats A/B. Night landing: Rwy 21, operational VGSI required, remain on or above VGSI glidepath until threshold.		MALSR 	MISSED APPROACH: Climbing left turn to 11000 on heading 130° and FLG R-172 to OATES INT/16.7 DME, continue climb-in-hold.	
	ATIS 125.8	PHOENIX APP CON 126.375 236.775	FLAGSTAFF TOWER ★ 134.55 (CTAF) 239.25	GND CON 121.9	UNICOM 122.95



ELEV 7014	D	TDZE 7003
-----------	---	-----------

CIRCLING	7520-1 506 (600-1)	7560-1 546 (600-1)	8100-3 1086 (1100-3)	8560-3 1546 (1600-3)
----------	-----------------------	-----------------------	-------------------------	-------------------------

HIRL RWY 3-21

SW-4, 08 AUG 2024 to 05 SEP 2024

SW-4, 08 AUG 2024 to 05 SEP 2024