

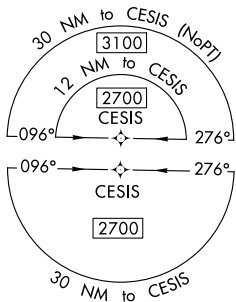
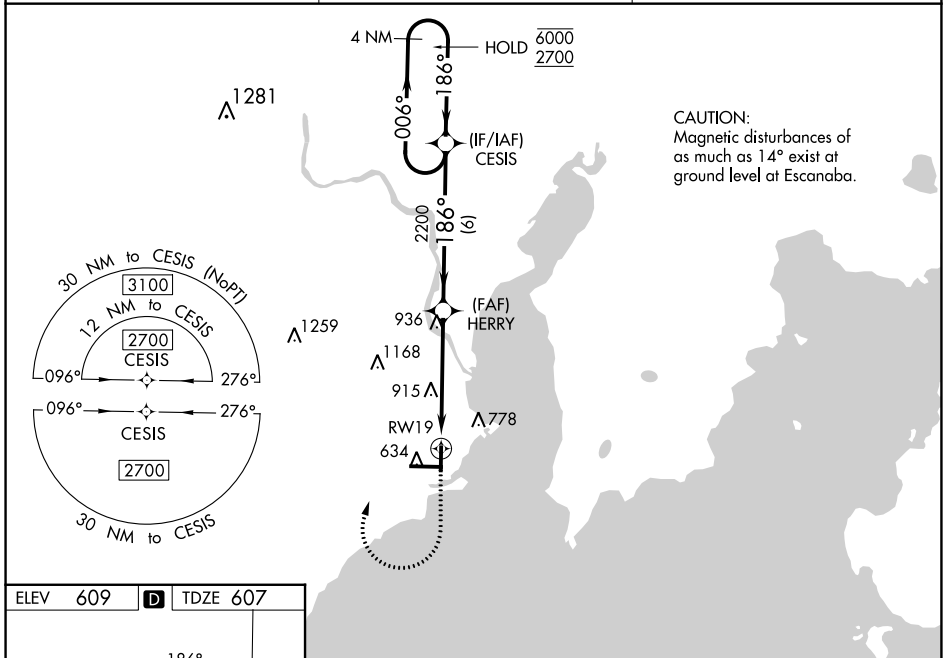
APP CRS	Rwy Idg	5015
186°	TDZE	607
	Apt Elev	609

RNAV (GPS) RWY 19

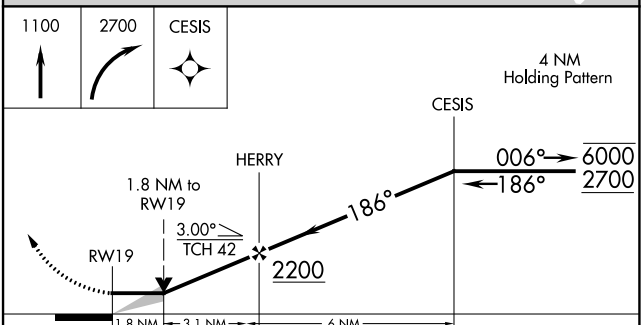
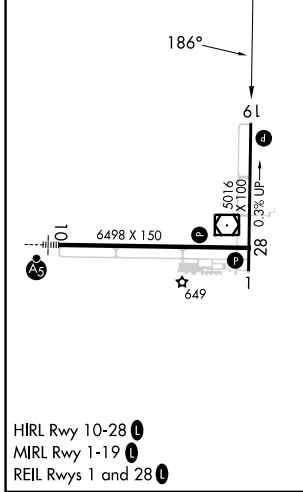
DELTA COUNTY (E/SC)

RNP APCH - GPS.		MISSED APPROACH: Climb to 1100, then climbing right turn to 2700 direct CESIS and hold.
-----------------	--	--

AWOS-3PT 121.425	MINNEAPOLIS CENTER 127.65	UNICOM 122.8 (CTAF) 0
----------------------------	-------------------------------------	---------------------------------



ELEV 609	D	TDZE 607
----------	----------	----------



CATEGORY	A	B	C	D
LNAV MDA	1220-1	613 (700-1)	1220-1 ³ / ₄	613 (700-1 ³ / ₄)
C CIRCLING	1220-1	611 (700-1)	1280-1 ³ / ₄ 671 (700-1 ³ / ₄)	1480-2 ³ / ₄ 871 (900-2 ³ / ₄)

EC-1, 08 AUG 2024 to 05 SEP 2024

EC-1, 08 AUG 2024 to 05 SEP 2024