

VOR/DME ESC <b>113.55</b> Chan <b>82</b> (Y)	APP CRS <b>351°</b>	Rwy Idg <b>5015</b> TDZE <b>600</b> Apt Elev <b>609</b>
--	------------------------	---

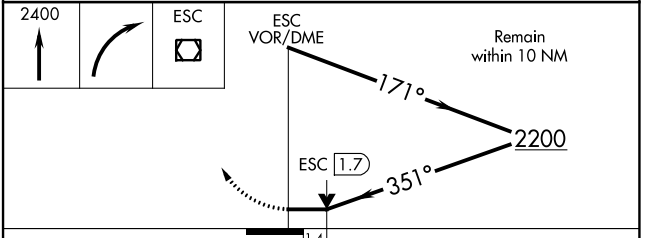
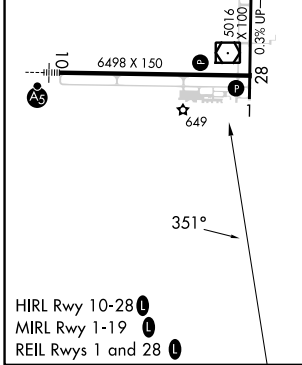
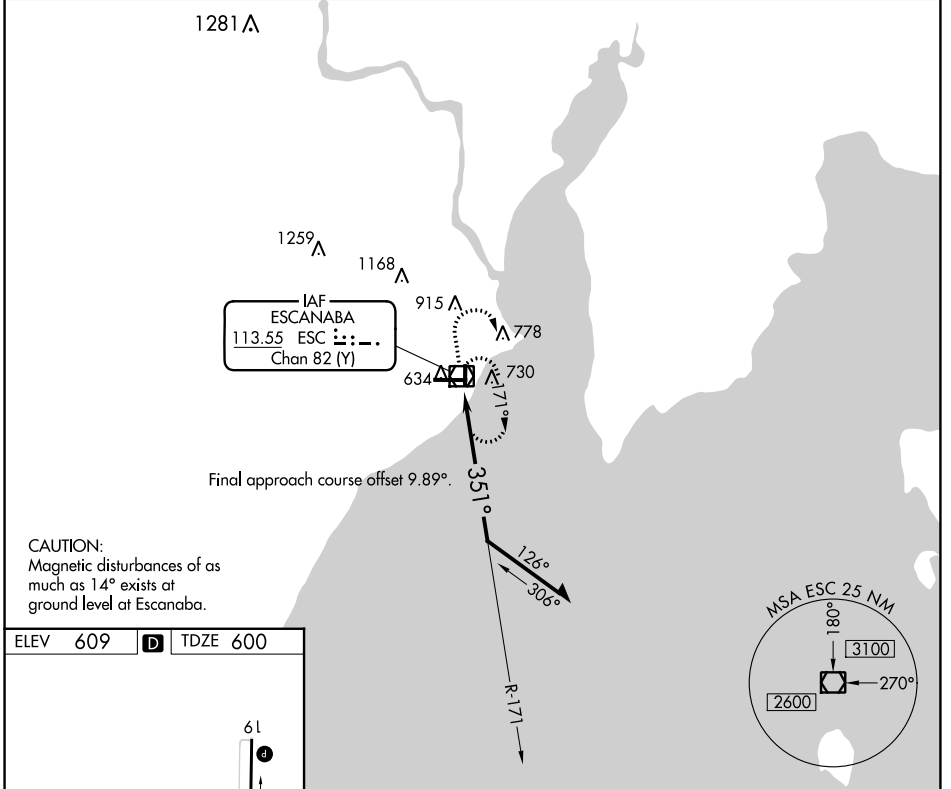
# VOR RWY 1

DELTA COUNTY (ESC)

**⚠** Rwy 1 helicopter visibility reduction below 3/4 SM NA.

**⚠** MISSED APPROACH: Climb to 2400 then right turn direct ESC VOR/DME and hold.

AWOS-3PT <b>121.425</b>	MINNEAPOLIS CENTER <b>127.65</b>	UNICOM <b>122.8</b> (CTAF) <b>0</b>
----------------------------	-------------------------------------	--



CATEGORY	A	B	C	D
S-1	1080-1 480 (500-1)		1080-1 3/8 480 (500-1 3/8)	
<b>C</b> CIRCLING	1080-1 471 (500-1)		1280-2 671 (700-2)	1480-2 3/4 871 (900-2 3/4)

EC-1, 08 AUG 2024 to 05 SEP 2024

EC-1, 08 AUG 2024 to 05 SEP 2024