

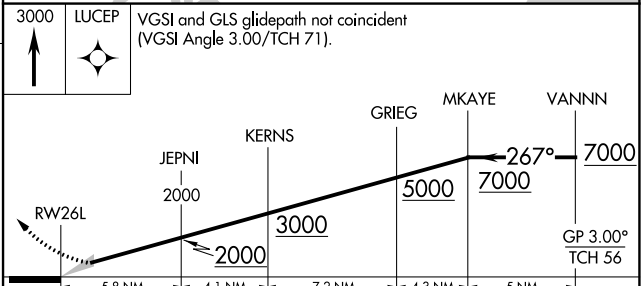
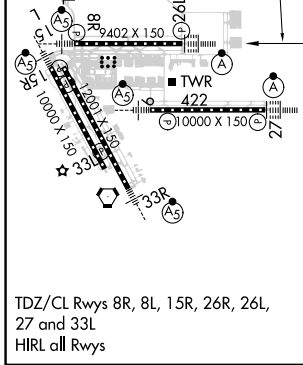
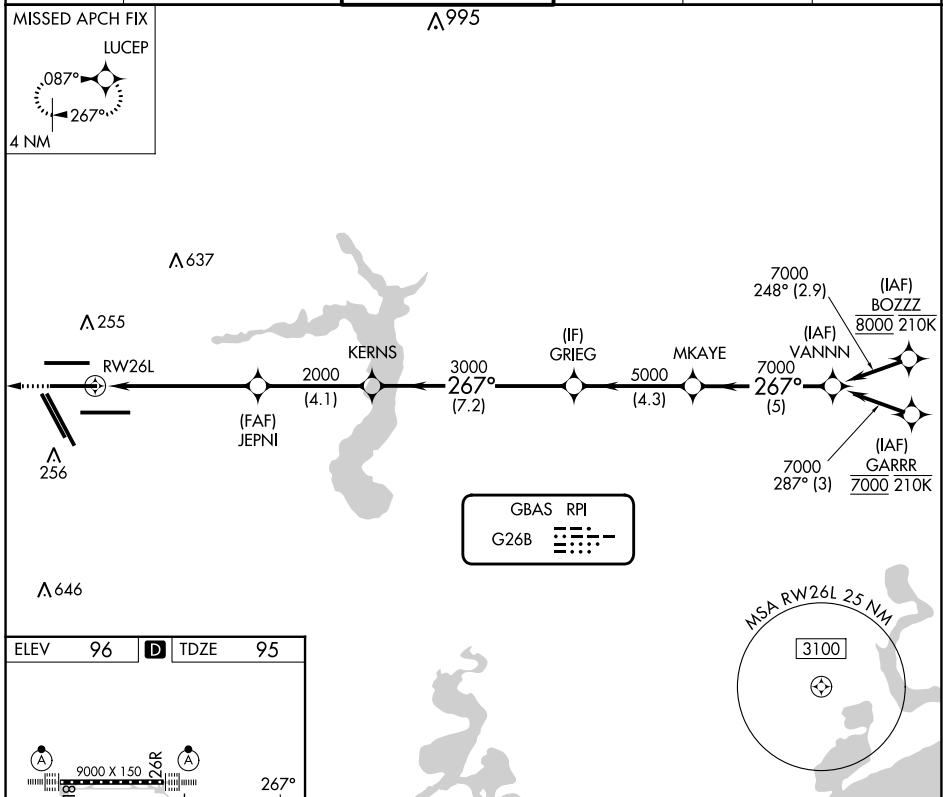
GBAS CH <b>20662</b> <b>G26B</b>	APP CRS <b>267°</b>	Rwy Idg TDZE Apt Elev	<b>9402</b> <b>95</b> <b>96</b>
--	------------------------	-----------------------------	---------------------------------------

# GLS RWY 26L

GEORGE BUSH INTCNL/HOUSTON (IAH)

RNP APCH - GPS.	ALSF-2	MISSED APPROACH: Climb to 3000 direct LUCEP and hold.
Simultaneous approach authorized. Use of FD or AP required during simultaneous operations. Autopilot coupled approach NA below 295.		

D-ATIS <b>124.05</b>	HOUSTON APP CON <b>120.05 379.1</b> EAST <b>124.35 316.15</b> WEST	HOUSTON TOWER <b>125.35 290.2</b>	GND CON <b>118.575</b>	CLNC DEL <b>128.1</b>	CPDLC
-------------------------	--	--------------------------------------	---------------------------	--------------------------	-------



TDZ/CL Rwy 8R, 8L, 15R, 26R, 26L, 27 and 33L	GLS DA	295/18	200 (200-1/2)
HIRL all Rwys			

SC-5, 08 AUG 2024 to 05 SEP 2024

SC-5, 08 AUG 2024 to 05 SEP 2024