

HOUSTON, TEXAS

AL-5461 (FAA)

24193

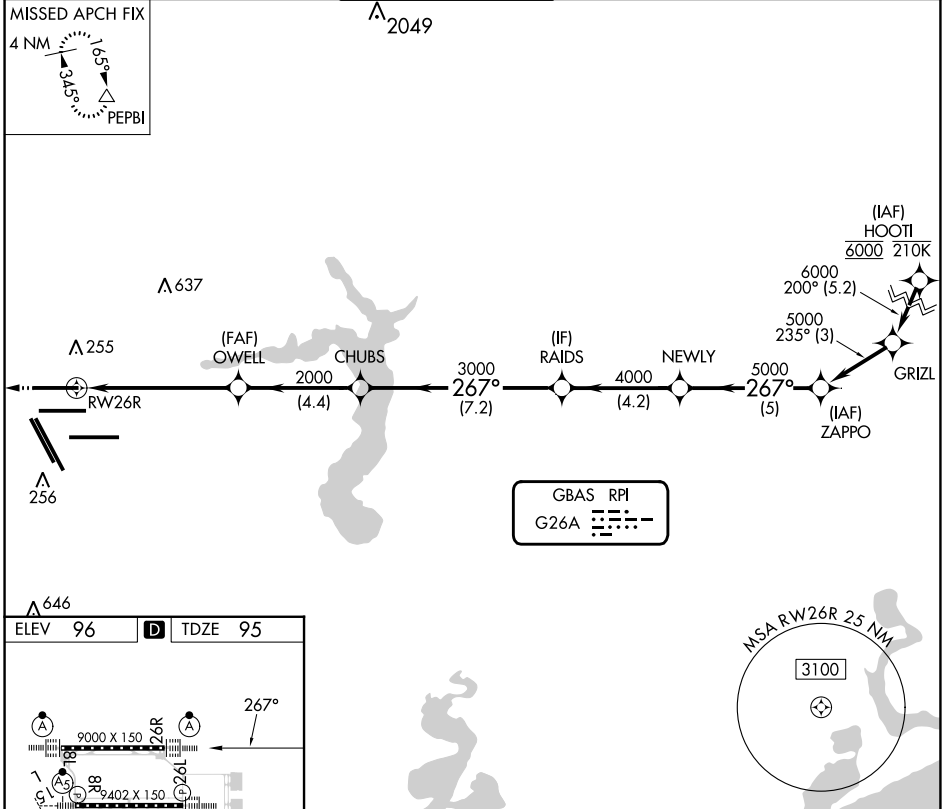
GBAS CH <b>21484</b> <b>G26A</b>	APP CRS <b>267°</b>	Rwy Idg TDZE Apt Elev	<b>9000</b> <b>95</b> <b>96</b>
--	------------------------	-----------------------------	---------------------------------------

# GLS RWY 26R

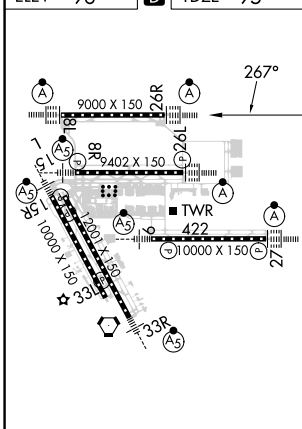
GEORGE BUSH INTCNL/HOUSTON (IAH)

RNP APCH - GPS.		ALSIF-2	MISSED APPROACH: Climb to 600 then climbing right turn to 3000 direct PEPBI and hold.		
Simultaneous approach authorized. Use of FD or AP required during simultaneous operations. Autopilot coupled approach NA below 295.					

D-ATIS <b>124.05</b>	HOUSTON APP CON <b>120.05 379.1</b> EAST <b>124.35 316.15</b> WEST	HOUSTON TOWER <b>120.725 290.2</b>	GND CON <b>118.575</b>	CLNC DEL <b>128.1</b>	CPDLC
-------------------------	--	---------------------------------------	---------------------------	--------------------------	-------



ELEV 96	<b>D</b>	TDZE 95
---------	----------	---------



TDZ/CL Rwy 8R, 8L, 15R, 26R, 26L, 27 and 33L  
HIRL all Rwy

600	3000	PEPBI				
CHUBS		RAIDS	NEWLY	ZAPPO		
2000		4000	5000	5000		
2000		3000	267°		GP 3.00° TCH 59	
5.8 NM		4.4 NM	7.2 NM	4.2 NM	5 NM	
CATEGORY	A	B	C	D		
GLS DA	295/18		200 (200-1/2)			

HOUSTON, TEXAS  
Amdt 2A 20APR23

29°59'N-95°20'W

# GLS RWY 26R

SC-5, 08 AUG 2024 to 05 SEP 2024

SC-5, 08 AUG 2024 to 05 SEP 2024