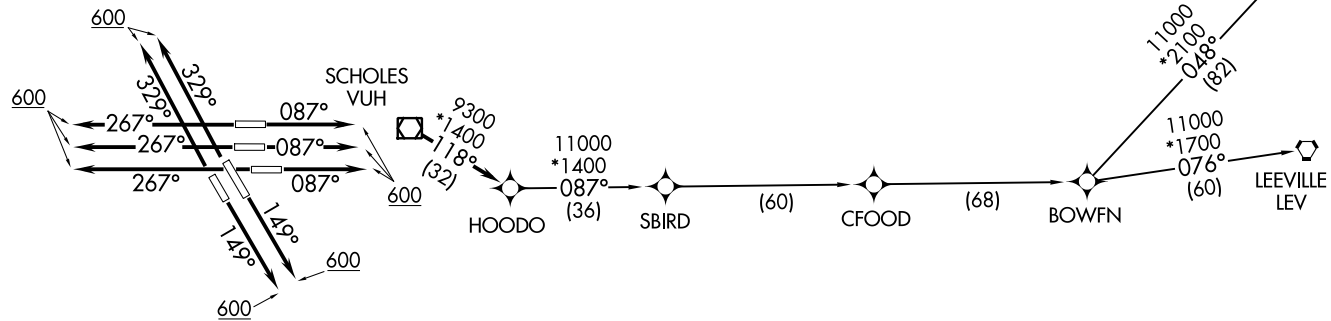
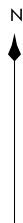


HOODO SEVEN DEPARTURE (RNAV)
 (HOODO07.HOODO) 07OCT21
 HOUSTON, TEXAS
 GEORGE BUSH INT/CNTL/HOUSTON (IAH)

D-ATIS
 124.05
 CLNC DEL
 128.1
 CPDLC
 GND CON
 118.575 (Rwys 8L/R, 9, 26L/R, 27)
 121.7 (Rwys 15L/R, 33L/R)
 HOUSTON TOWER
 120.725 290.2 (Rwys 8L, 26R)
 125.35 290.2 (Rwys 8R, 26L)
 127.3 288.25 (Rwys 15L/R, 33L/R)
 135.15 290.2 (Rwys 9, 27)
 HOUSTON DEP CON
 127.125 269.075

NOTE: RNAV 1.
 NOTE: RADAR required.
 NOTE: ATC assigned only.
 NOTE: DME/DME/IRU or GPS required.
 NOTE: For non-GPS equipped aircraft, LCH, LLA, TBD, and LEV DME's must be operational.

**TOP ALTITUDE:
 16000**



TAKEOFF MINIMUMS
 Rwys 8L/R, 9, 15L/R, 26L/R, 27, 33L/R:
 Standard with minimum climb of 500' per NM to 600.

NOTE: Chart not to scale.

(NARRATIVE ON FOLLOWING PAGE)

(HOODO07.HOODO) 21280
 HOODO SEVEN DEPARTURE (RNAV)
 AL-5461 (FAA)
 HOUSTON, TEXAS
 GEORGE BUSH INT/CNTL/HOUSTON (IAH)



DEPARTURE ROUTE DESCRIPTION

TAKEOFF RUNWAYS 8L/R, 9: Climb on heading 087° to 600, for RADAR vectors to VUH VOR/DME, thence

TAKEOFF RUNWAYS 15L/R: Climb on heading 149° to 600, for RADAR vectors to VUH VOR/DME, thence

TAKEOFF RUNWAYS 26L/R, 27: Climb on heading 267° to 600, for RADAR vectors to VUH VOR/DME, thence

TAKEOFF RUNWAYS 33L/R: Climb on heading 329° to 600, for RADAR vectors to VUH VOR/DME, thence

. . . . on track 118° to HOODO, then on (transition). Maintain 16000.
Expect filed altitude 10 minutes after departure.

BOWFN TRANSITION (HOODO7.BOWFN)

CFOOD TRANSITION (HOODO7.CFOOD)

HARVEY TRANSITION (HOODO7.HRV)

LEEVILLE TRANSITION (HOODO7.LEV)

SBIRD TRANSITION (HOODO7.SBIRD)

SC-5, 08 AUG 2024 to 05 SEP 2024

SC-5, 08 AUG 2024 to 05 SEP 2024