

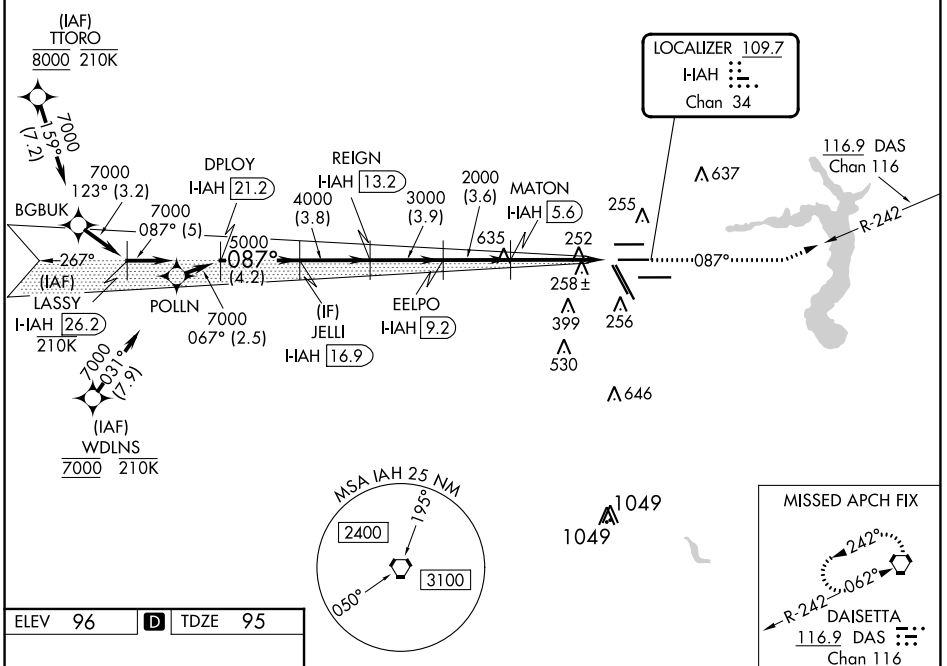
LOC/DME I-IAH 109.7 Chan 34	APP CRS 087°	Rwy Idg 9402 TDZE 95 Apt Elev 96
---	------------------------	---

ILS RWY 8R (SA CAT I & II)

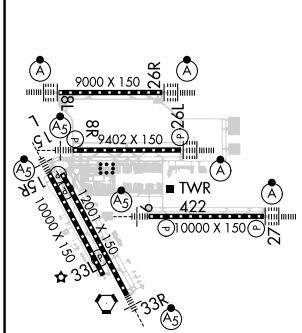
GEORGE BUSH INTCNL/HOUSTON (IAH)

RNAV 1-GPS or RADAR required for procedure entry, DME.		MALSR 	MISSED APPROACH: Climb to 3000 on heading 087° and on DAS VORTAC R-242 to DAS VORTAC and hold.
<p>Simultaneous approach authorized. SA CAT I: Requires specific OPSPEC, MSPEC, or LOA approval and use of HUD to DH. SA CAT II: Reduced lighting: requires specific OPSPEC, MSPEC, or LOA approval and use of autoland or HUD to touchdown.</p>			

D-ATIS 124.05	HOUSTON APP CON 120.05 379.1 EAST 124.35 316.15 WEST	HOUSTON TOWER 125.35 290.2	GND CON 118.575	CLNC DEL 128.1	CPDLC A 2049
-------------------------	--	--------------------------------------	---------------------------	--------------------------	-----------------



ELEV 96	D	TDZE 95
---------	----------	---------



TDZ/CL Rwy 8R, 8L, 15R, 26R, 26L, 27 and 33L
HIRL all Rwy

VGSi and ILS glidepath not coincident (VGSi Angle 3.00/TCH 72).		3000	DAS
LASSY I-IAH 26.2	DPLOY I-IAH 21.2	JELLI I-IAH 16.9	REIGN I-IAH 13.2
EELPO I-IAH 9.2	MATON INT I-IAH 5.6		
7000-087°		087°	
7000		5000	
4000		3000	
2000		2000	
GS 3.00° TCH 55		1040°	
-5 NM		-4.2 NM	
-3.8		-3.9	
-3.6		-5.8 NM	
CATEGORY		A B C D	
S-ILS 8R		SA CAT I RA 152/14 150 DA 245	
S-ILS 8R		SA CAT II RA 102/12 100 DA 195	

SA CATEGORY I and II ILS SPECIAL AIRCREW & AIRCRAFT CERTIFICATION REQUIRED

SC-5, 08 AUG 2024 to 05 SEP 2024

SC-5, 08 AUG 2024 to 05 SEP 2024