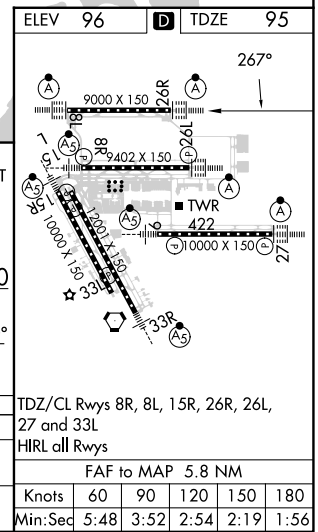
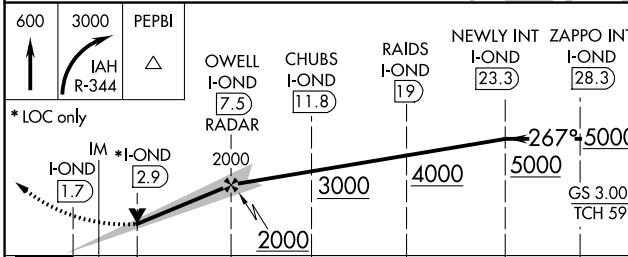
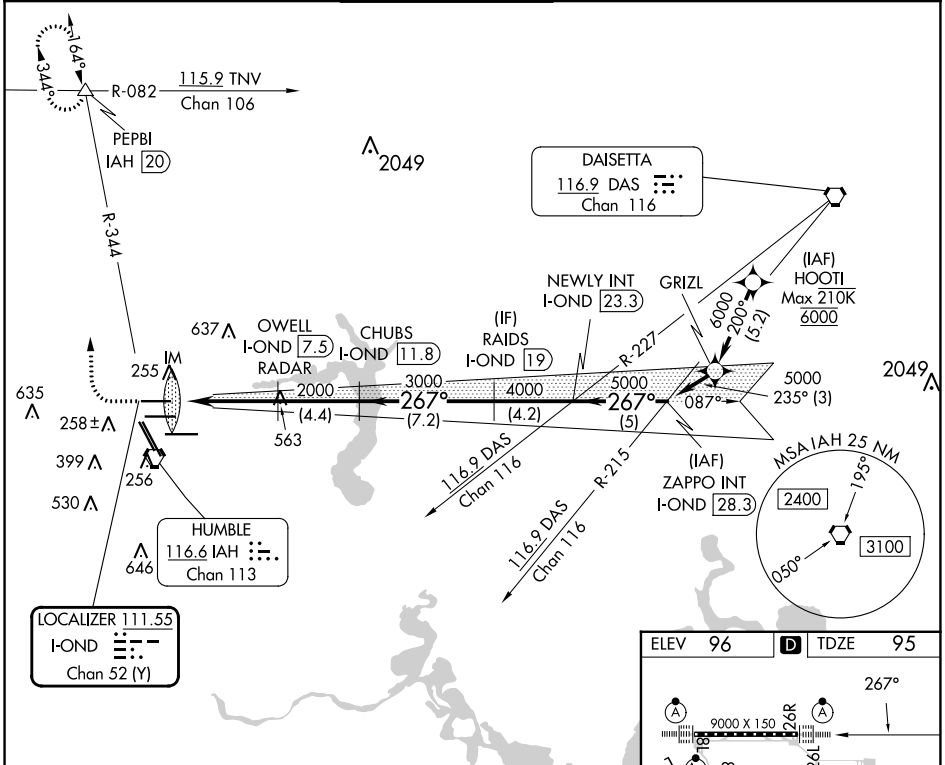


LOC/DME I-OND <b>111.55</b> Chan <b>52 (Y)</b>	APP CRS <b>267°</b>	Rwy Idg <b>9000</b> TDZE <b>95</b> Apt Elev <b>96</b>
--	------------------------	---

# ILS or LOC RWY 26R

GEORGE BUSH INTCNL/HOUSTON (IAH)

DME required. From HOOI: RNAV 1-GPS required.		ALSF-2 	MISSED APPROACH: Climb to 600 then climbing right turn to 3000 on IAH VORTAC R-344 to PEPBI INT/IAH 20 DME and hold.				
Simultaneous approach authorized with Rwy 26L and Rwy 27. For inop ALS, increase S-ILS 26R Cat E visibility to RVR 4000, and S-LOC 26R Cat C/D/E visibility to 1 1/8 SM.		D-ATIS <b>124.05</b>	HOUSTON APP CON <b>120.05 379.1 EAST</b> <b>124.35 316.15 WEST</b>	HOUSTON TOWER <b>120.725 290.2</b>	GND CON <b>118.575</b>	CLNC DEL <b>128.1</b>	CPDLC



CATEGORY	A	B	C	D	E	TDZ/CL Rws 8R, 8L, 15R, 26R, 26L, 27 and 33L HIRL all Rws FAF to MAP 5.8 NM Knots 60 90 120 150 180 Min:Seq 5:48 3:52 2:54 2:19 1:56
S-ILS 26R	295/18		200 (200-1/2)			
S-LOC 26R	580/24	485 (500-1/2)	580/50	485 (500-1)		

SC-5, 08 AUG 2024 to 05 SEP 2024

SC-5, 08 AUG 2024 to 05 SEP 2024