

LOC/DME I-BZU 111.55 Chan 52 (Y)	APP CRS 087°	Rwy Idg TDZE Apt Elev	9000 94 96
---	------------------------	-----------------------------	---------------------------------------

ILS or LOC RWY 8L

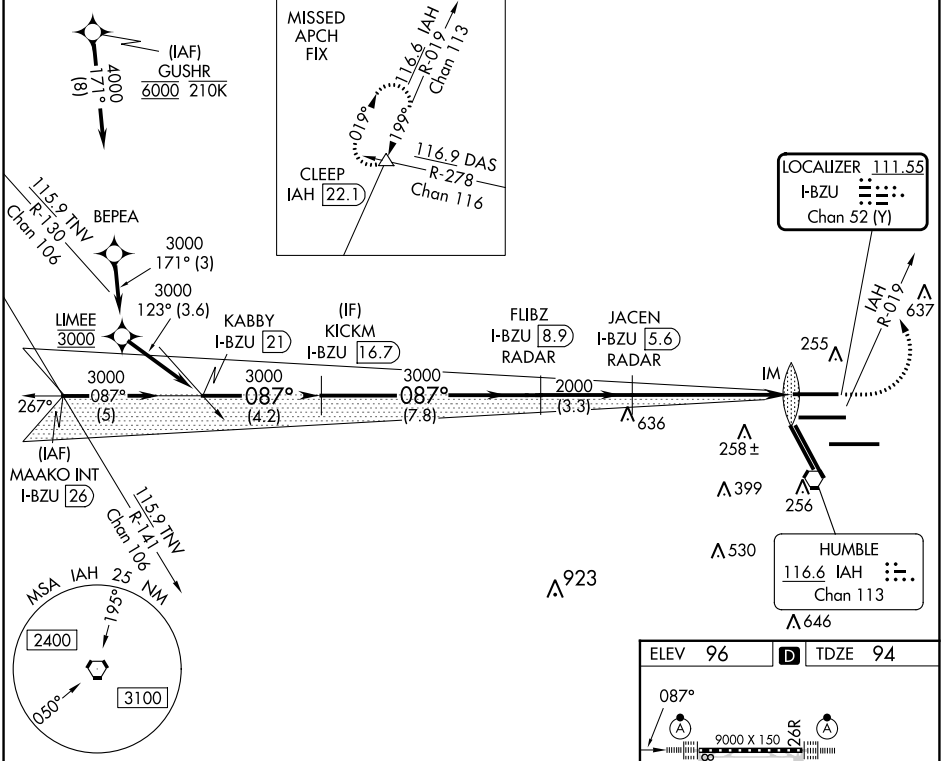
GEORGE BUSH INTCNL/HOUSTON (IAH)

DME required. From GUSHR. RNAV 1-GPS required.

Simultaneous approach authorized with Rwy 8R and Rwy 9.

ALSF-2 MISSED APPROACH: Climb to 600 then climbing left turn to 4000 on IAH VORTAC R-019 to CLEEP INT/IAH 22.1 DME and hold.

ATIS 124.05	HOUSTON APP CON 120.05 379.1 EAST 124.35 316.15 WEST	HOUSTON TOWER 120.725 290.2	GND CON 118.575	CLNC DEL 128.1	CPDLC
-----------------------	--	---------------------------------------	---------------------------	--------------------------	-------



SC-5, 08 AUG 2024 to 05 SEP 2024

SC-5, 08 AUG 2024 to 05 SEP 2024

	KABBY I-BZU 21		KICKM I-BZU 16.7		FLIBZ I-BZU 8.9		JACEN I-BZU 5.6		IM		HUMBLE 116.6 IAH Chan 113																		
	3000		3000		3000		2000		2000		255																		
	087°		087°		087°		087°		087°		087°																		
	4.2 NM		7.8 NM		3.3 NM		4.4 NM		1.3		0.1																		
CATEGORY	A		B		C		D		E																				
S-ILS 8L	294/18		200 (200-½)																										
S-LOC 8L	600/24		506 (600-½)		600/55		506 (600-1)																						
<table border="1"> <tr> <td>ELEV 96</td> <td>TDZE 94</td> </tr> <tr> <td colspan="2"> </td> </tr> <tr> <td colspan="2"> TDZ/CL Rwy 8R, 8L, 15R, 26R, 26L, 27 and 33L HIRL all Rwys FAF to MAP 5.8 NM </td> </tr> <tr> <td>Knots</td> <td>60</td> <td>90</td> <td>120</td> <td>150</td> <td>180</td> </tr> <tr> <td>Min:Sec</td> <td>5:48</td> <td>3:52</td> <td>2:54</td> <td>2:19</td> <td>1:56</td> </tr> </table>												ELEV 96	TDZE 94			TDZ/CL Rwy 8R, 8L, 15R, 26R, 26L, 27 and 33L HIRL all Rwys FAF to MAP 5.8 NM		Knots	60	90	120	150	180	Min:Sec	5:48	3:52	2:54	2:19	1:56
ELEV 96	TDZE 94																												
TDZ/CL Rwy 8R, 8L, 15R, 26R, 26L, 27 and 33L HIRL all Rwys FAF to MAP 5.8 NM																													
Knots	60	90	120	150	180																								
Min:Sec	5:48	3:52	2:54	2:19	1:56																								