

APP CRS	Rwy Idg	10000
267°	TDZE	86
	Apt Elev	96

RNAV (RNP) Y RWY 27

GEORGE BUSH INTCNL/HOUSTON (IAH)

RNP AR APCH - GPS.

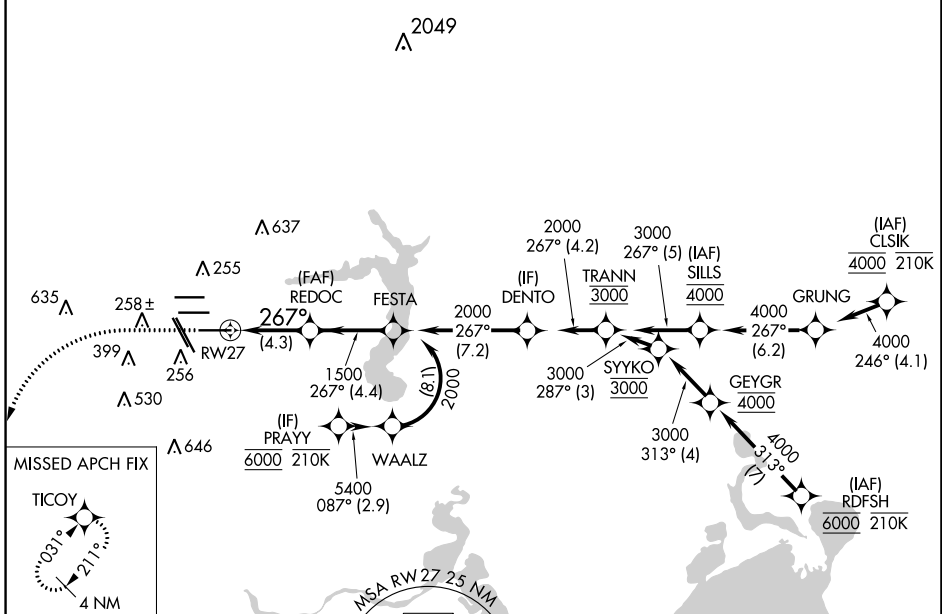
Simultaneous approach authorized. Use of FD or AP required during simultaneous operations. For uncompensated Baro-VNAV systems, procedure NA below -2°C or above 54°C. For inop ALS, increase RNP 0.30 all Cats visibility to RVR 4500.

ALSf-2

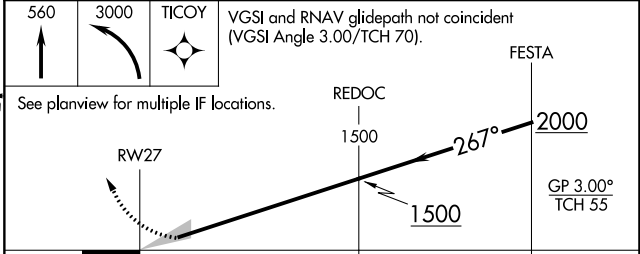
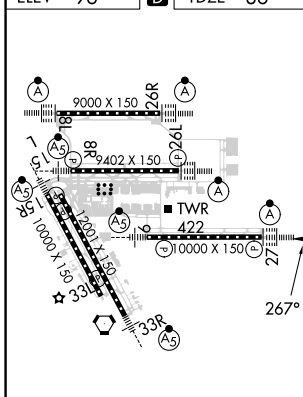


MISSED APPROACH: Climb to 560 then climbing left turn to 3000 direct TICOY and hold.

D-ATIS 124.05	HOUSTON APP CON 120.05 379.1 EAST 124.35 316.15 WEST	HOUSTON TOWER 135.15 290.2	GND CON 118.575	CLNC DEL 128.1	CPDLC
-------------------------	--	--------------------------------------	---------------------------	--------------------------	-------



ELEV 96	D	TDZE 86
---------	----------	---------



CATEGORY	A	B	C	D
RNP 0.30 DA	380/24		294 (300-1/2)	

AUTHORIZATION REQUIRED

SC-5, 08 AUG 2024 to 05 SEP 2024

SC-5, 08 AUG 2024 to 05 SEP 2024