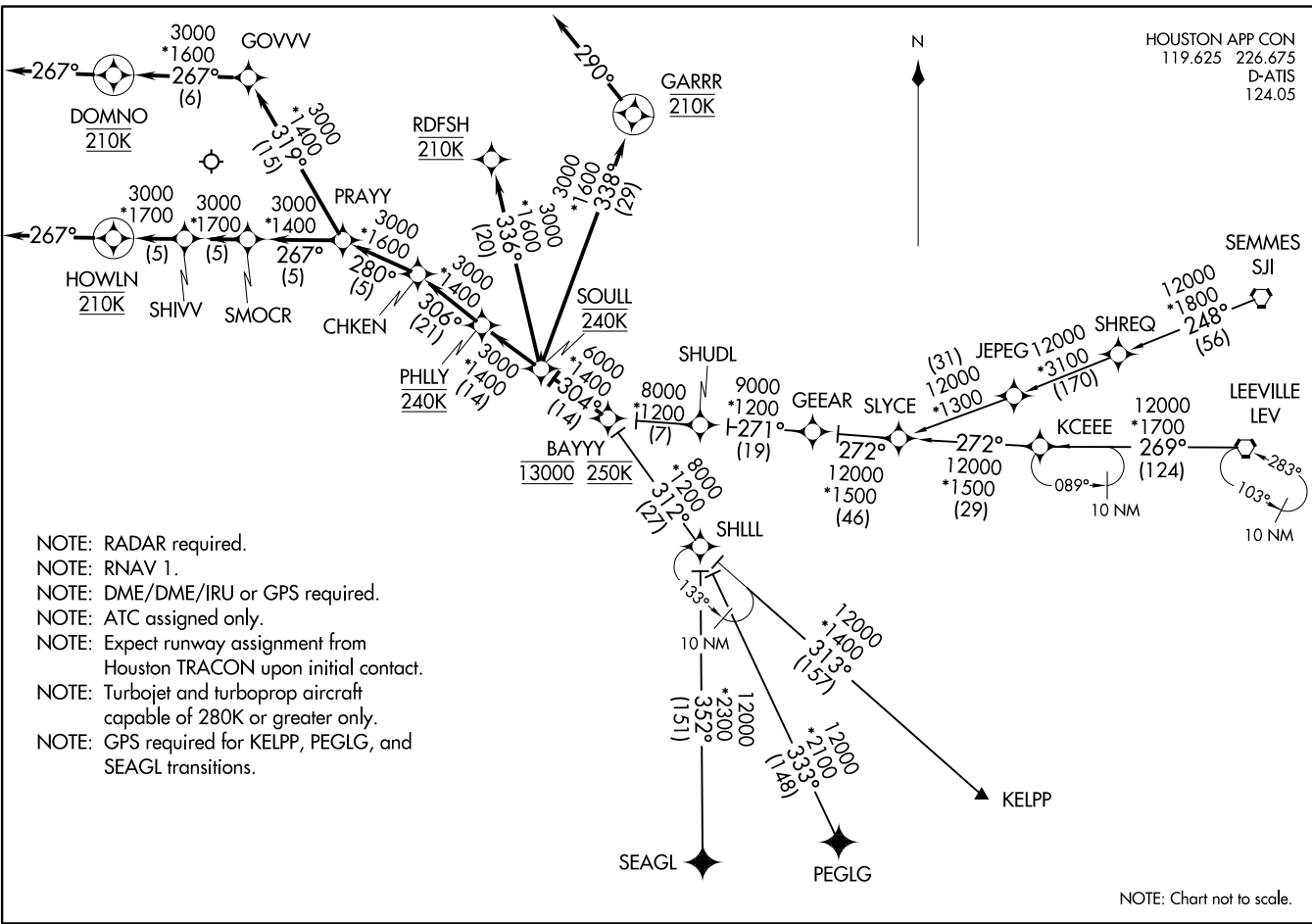


SOUL ONE ARRIVAL (RNAV)
(BAYYY.SOULL1) 08JAN15

GEORGE BUSH INTCNL/HOUSTON (IAH)
HOUSTON, TEXAS



KCEEE TRANSITION (KCEEE.SOULL1):

KELPP TRANSITION (KELPP.SOULL1):

LEEVILLE TRANSITION (LEV.SOULL1):

PEGLG TRANSITION (PEGLG.SOULL1):

SEAGL TRANSITION (SEAGL.SOULL1):

SHLLL TRANSITION (SHLLL.SOULL1):

SEMMES TRANSITION (SJI.SOULL1):

ARRIVAL ROUTE DESCRIPTION

From BAYYY on track 304° to SOULL at 240K.

LANDING RUNWAY 8L: From SOULL on track 304° to PHLLY at 240K, then on track 306° to CHKEN, then on track 280° to PRAYY, then on track 319° to GOVVV, then on track 267° to DOMNO at 210K, then on track 267° at 210K. Expect vectors to final approach course.

LANDING RUNWAY 8R: From SOULL on track 304° to PHLLY at 240K, then on track 306° to CHKEN, then on track 280° to PRAYY, then on track 267° to SMOCR, then on track 267° to SHIVV, then on track 267° to HOWLN at 210K, then on track 267°. Expect vectors to final approach course.

LANDING RUNWAY 9: From SOULL on track 304° to PHLLY at 240K, then on track 306° to CHKEN, then on track 280° to PRAYY, then on track 267° to SMOCR, then on track 267° to SHIVV, then on track 267° to HOWLN at 210K, then on track 267°. Expect vectors to final approach course.

LANDING RUNWAY 26L: From SOULL on track 338° to GARRR at 210K. Expect ILS or LOC Rwy 26L.

LANDING RUNWAY 26R: From SOULL on track 338° to GARRR at 210K, then on track 290° at 210K. Expect vectors to final approach course.

LANDING RUNWAY 27: From SOULL on track 336° to RDFSH at 210K. Expect ILS or LOC Rwy 27.

SC-5, 08 AUG 2024 to 05 SEP 2024

SC-5, 08 AUG 2024 to 05 SEP 2024