


LOC I-HUV <b>109.55</b>	APP CRS <b>019°</b>	Rwy Idg <b>6506</b>
		TDZE <b>300</b>
		Apt Elev <b>303</b>

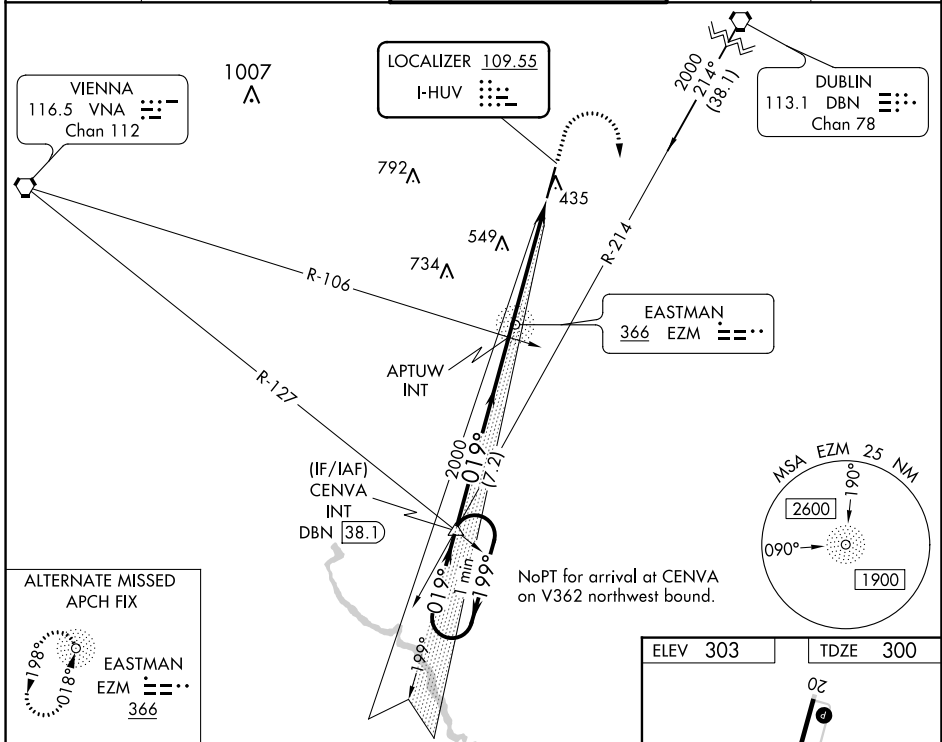
# ILS or LOC RWY 2

HEART OF GEORGIA RGNL (E2M)

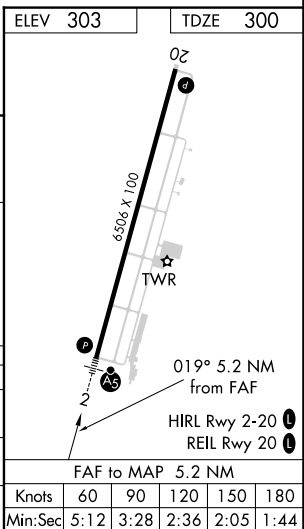
**⚠** When local altimeter setting not received, use Dublin altimeter setting and increase all DA 52 feet and all MDA 60 feet; increase S-LOC 2 Cat C/D and Circling Cat C visibility ¼ mile.

**MALSR**  MISSED APPROACH: Climb to 800 then climbing right turn to 2000 on heading 180° and DBN VORTAC R-214 to CENVA INT and hold.

ATIS <b>119.425</b>	JACKSONVILLE CENTER <b>127.575 269.025</b>	HEART OF GEORGIA TOWER ★ <b>124.55 (CTAF) 0</b>	GND CON <b>121.175</b>	UNICOM <b>122.95</b>
------------------------	---	--	---------------------------	-------------------------



One Minute Holding Pattern	VGSI and ILS glidepath not coincident (VGSI Angle 3.00/TCH 45).		800	2000	DBN R-214	CENVA
	CENVA INT	APTUW INT	↑	hdg 180°		△
GS 3.00° TCH 49	2000 ← 199°	2000 → 019°	2000			
CATEGORY	A	B	C	D		
S-ILS 2	500-½		200 (200-½)			
S-LOC 2	820-½	520 (600-½)	820-1	520 (600-1)		
<b>C</b> CIRCLING	820-1	517 (600-1)	900-1½	900-2		
			597 (600-1½)	597 (600-2)		



SE-4, 08 AUG 2024 to 05 SEP 2024

SE-4, 08 AUG 2024 to 05 SEP 2024