

APP CRS **173°**
 Rwy ldg **5000**
 TDZE **343**
 Apt Elev **343**

RNAV (GPS) RWY 18

NACOGDOCHES A L MANGHAM JR RGNL (OCH)

RNP APCH-GPS.

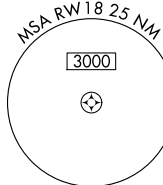
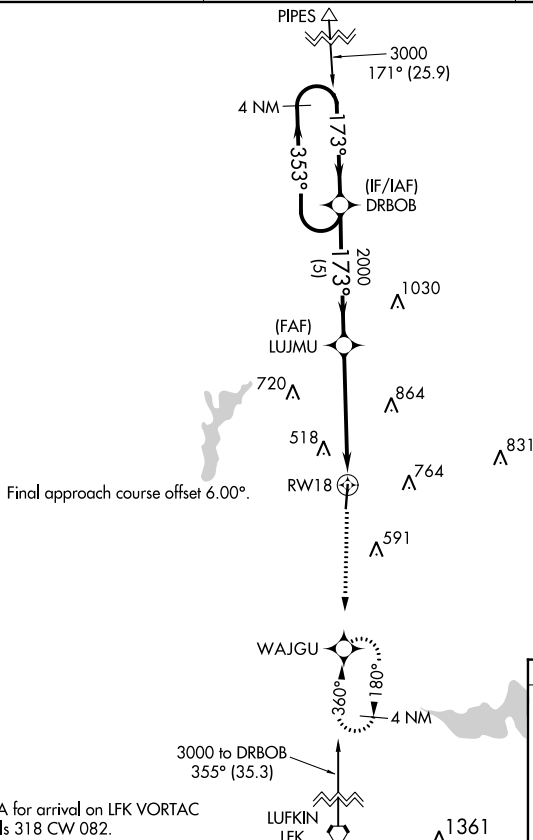
⚠ Rwy 18 helicopter visibility reduction below 1 SM NA. When local altimeter setting not received, use Lufkin altimeter setting and increase all MDA 60 feet and visibility LNAV Cat C and Circling Cat C ¼ SM.

MISSED APPROACH: Climb to 2400 direct WAJGU and hold.

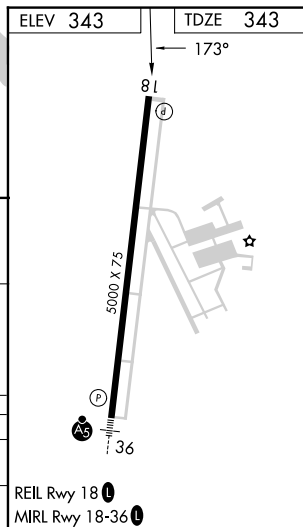
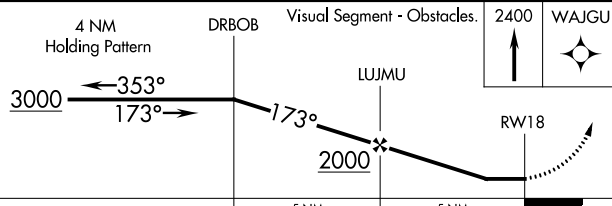
AWOS-3PT
135.625

HOUSTON CENTER
125.175 285.575

UNICOM
123.0(CTAF) 0



Procedure NA for arrival on LFK VORTAC airway radials 318 CW 082.



CATEGORY	A	B	C	D
LNAV MDA	980-1	637 (700-1)	980-1¾ 637 (700-1¾)	NA
CIRCLING	980-1	637 (700-1)	1080-2 737 (800-2)	NA

REIL Rwy 18 **0**
 MRL Rwy 18-36 **0**

RNAV (GPS) RWY 18

SC-5, 08 AUG 2024 to 05 SEP 2024

SC-5, 08 AUG 2024 to 05 SEP 2024