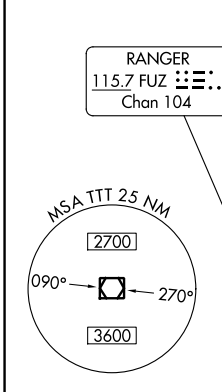
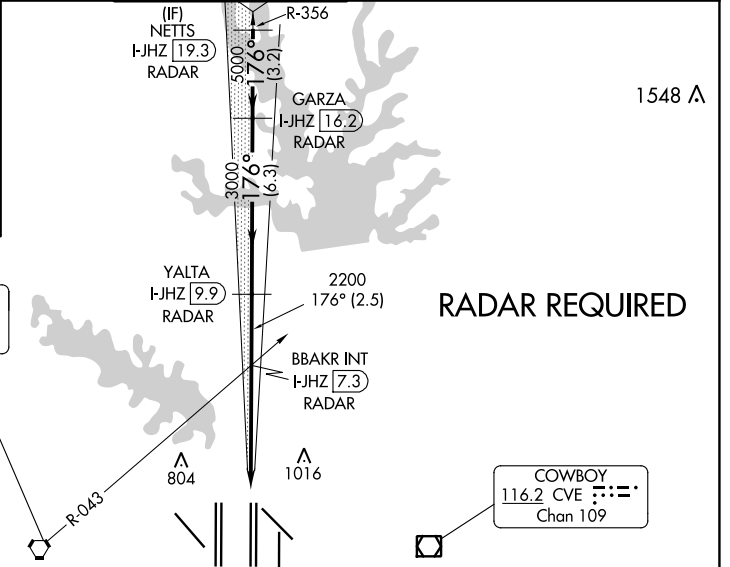
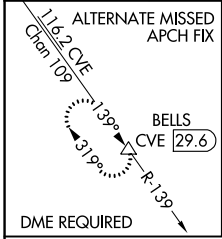


LOC/DME I-JHZ 111.35 Chan 50 (Y)	APP CRS 176°	Rwy ldg 13400 TDZE 567 Apt Elev 607
---	------------------------	--

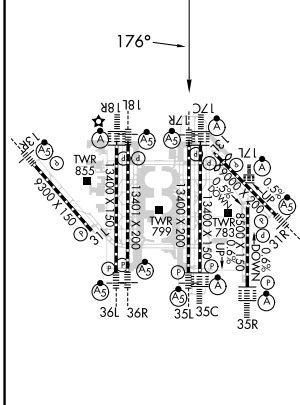
CONVERGING ILS RWY 17R

DALLAS-FORT WORTH INTL (DFW)

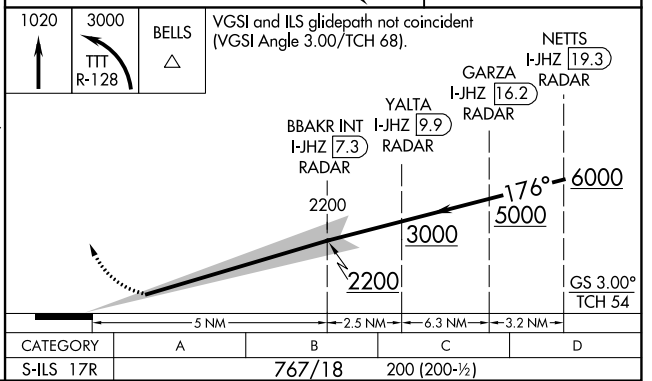
▽ DME or RADAR required. Simultaneous approach authorized with Converging ILS Rwy 13R.	MALSR 	MISSED APPROACH: Climb to 1020 then climbing left turn to 3000 on TTT VOR/DME R-128 to BELLS INT/TTT 33.2 DME and hold.			
D-ATIS ARR 123.775 DEP 135.925	REGIONAL APP CON 127.075	DFW TOWER 126.55 127.5 EAST 124.15 134.9 WEST	GND CON 121.65 121.8 EAST 121.85 WEST	CLNC DEL 128.25	CPDLC



ELEV 607	D	TDZE 567
-----------------	----------	-----------------



HIRL all Rwy's
REIL Rwy's 13L and 31L
TDZ/CL all Rwy's except 13L and 31L



CATEGORY	A	B	C	D
S-ILS 17R	767/18		200 (200-1/2)	

CONVERGING ILS RWY 17R

SC-2, 08 AUG 2024 to 05 SEP 2024

SC-2, 08 AUG 2024 to 05 SEP 2024