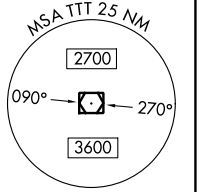
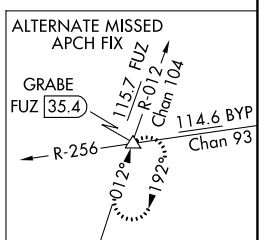
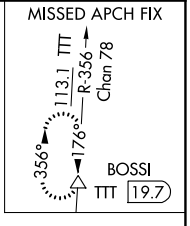
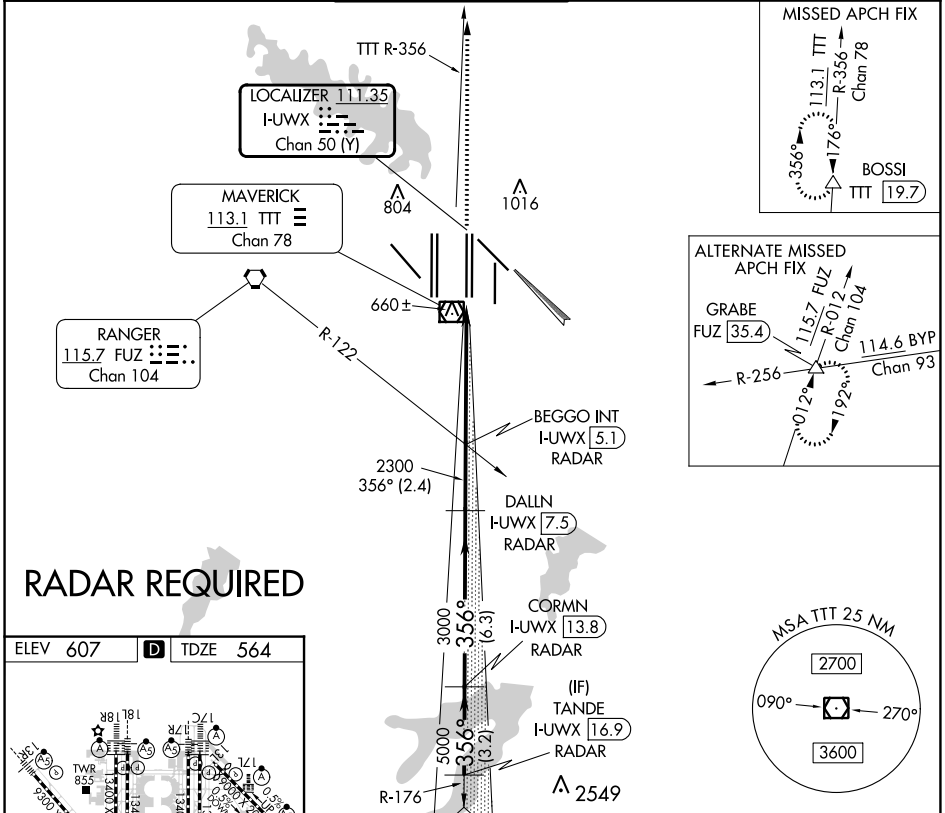


LOC/DME I-UWX 111.35 Chan 50 (Y)	APP CRS 356°	Rwy Idg 13400 TDZE 564 Apt Elev 607
--	------------------------	--

CONVERGING ILS RWY 35L

DALLAS-FORT WORTH INTL (DFW)

▼ DME or RADAR required. Simultaneous approach authorized with Converging ILS Rwy 31R.		MALS R 	MISSED APPROACH: Climb to 2000 then climb to 3000 on TTT VOR/DME R-356 to BOSSI/TTT 19.7 DME/RADAR and hold.			
D-ATIS ARR 123.775 DEP 135.925	REGIONAL APP CON 127.075	DFW TOWER 126.55 127.5 EAST 124.15 134.9 WEST		GND CON 121.65 121.8 EAST 121.85 WEST	CLNC DEL 128.25	CPDLC



ELEV 607 **D** **TDZE 564**

HIRL all Rws
REIL Rws 13L and 31L
TDZ/CL all Rws except 13L and 31L

VGSI and ILS glidepath not coincident (VGSI Angle 3.00/TCH 63).

TANDE I-UWX 16.9 RADAR	CORMN I-UWX 13.8 RADAR	DALLN I-UWX 7.5 RADAR	BEGGO INT I-UWX 5.1 RADAR	BOSSI TTT R-356
6000 356° 5000 3000 2300				
GS 3.00° TCH 47				
3.2 NM		6.3 NM		
		2.4 NM		
		5.3 NM		
CATEGORY A	CATEGORY B	CATEGORY C	CATEGORY D	
S-ILS 35L		764/18		200 (200-1/2)

SC-2, 08 AUG 2024 to 05 SEP 2024

SC-2, 08 AUG 2024 to 05 SEP 2024