

FORCK THREE DEPARTURE (RNAV)
(FORCK3.FORCK) 08SEF22

DALLAS-FORT WORTH, TEXAS
DALLAS-FORT WORTH INTL (DFW)

TOP ALTITUDE:
RWYS 31L/R: 5000
RWYS 17C/R, 18L/R,
35L/C, 36L/R: 10000

RNAV 1 - DME/DME/IRU or GPS.
RADAR required.

TAKEOFF MINIMUMS
Rwys 31L/R: Standard.
Rwys 17C/R, 18L/R, 35L/C, 36L/R:
Standard with minimum climb of 500' per
NM to 1120.

D-ATIS DEP 135.925
CLNC DEL 128.25
CPDLC
GND CON
121.65 121.8 (EAST)
121.85 (WEST)
DFW TOWER
126.55 127.5 (EAST)
124.15 134.9 (WEST)
REGIONAL DEP CON
118.55 290.35

ZACHH ✧

TRYTN ✧

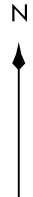
SWDIA ✧

ZERLU ✧

JAYXX ✧

TRRCH ✧

FORCK ✧

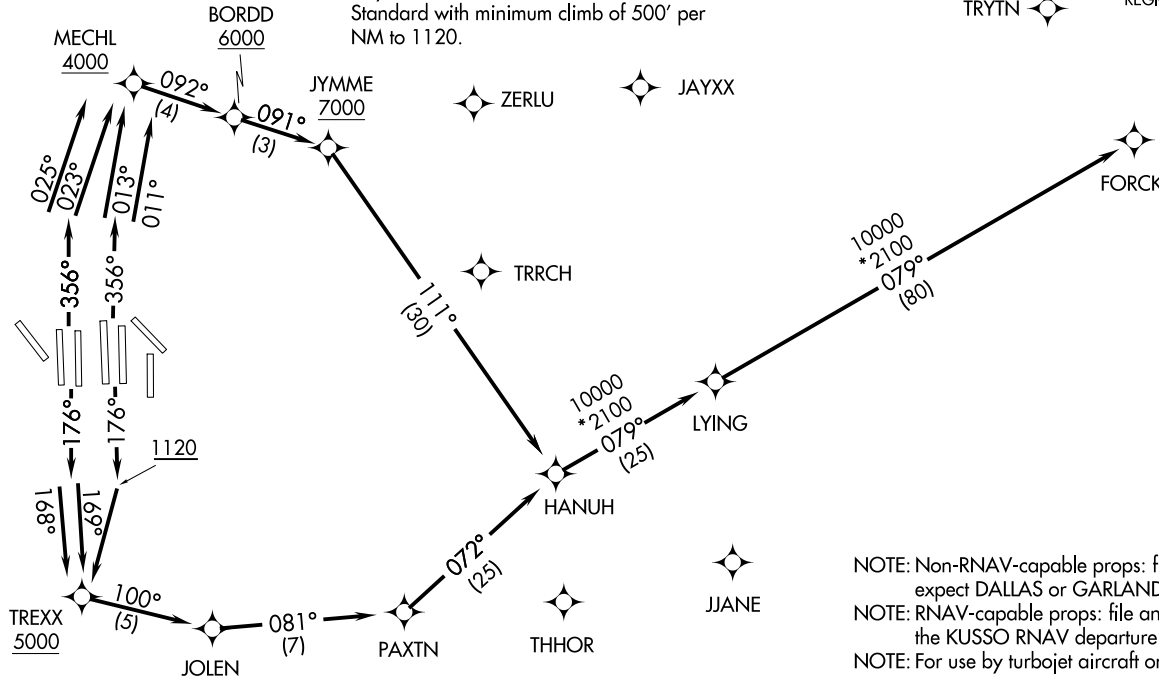


MRSSH ✧

JJANE ✧

THHOR ✧

NOTE: Non-RNAV-capable props: file and expect DALLAS or GARLAND departure.
NOTE: RNAV-capable props: file and expect the KUSSO RNAV departure.
NOTE: For use by turbojet aircraft only.



NOTE: Chart not to scale.

(NARRATIVE ON FOLLOWING PAGE)

(FORCK3.FORCK) 23334
FORCK THREE DEPARTURE (RNAV)

AL-6039 (FAA)

DALLAS-FORT WORTH INTL (DFW)
DALLAS-FORT WORTH, TEXAS



DEPARTURE ROUTE DESCRIPTION

TAKEOFF RUNWAYS 17C/R: Climb on heading 176° to 1120, then direct to cross TREXX at or above 5000, then on track 100° to JOLEN, then on track 081° to PAXTN, then on track 072° to HANUH, thence. . . .

TAKEOFF RUNWAY 18L: Climb on heading 176° to intercept course 169° to cross TREXX at or above 5000, then on track 100° to JOLEN, then on track 081° to PAXTN, then on track 072° to HANUH, thence. . . .

TAKEOFF RUNWAY 18R: Climb on heading 176° to intercept course 168° to cross TREXX at or above 5000, then on track 100° to JOLEN, then on track 081° to PAXTN, then on track 072° to HANUH, thence. . . .

TAKEOFF RUNWAY 35C: Climb on heading 356° to intercept course 011° to cross MECHL at or above 4000, then on track 092° to cross BORDD at or above 6000, then on track 091° to cross JYMME at or above 7000, then on track 111° to HANUH, thence. . . .

TAKEOFF RUNWAY 35L: Climb on heading 356° to intercept course 013° to cross MECHL at or above 4000, then on track 092° to cross BORDD at or above 6000, then on track 091° to cross JYMME at or above 7000, then on track 111° to HANUH, thence. . . .

TAKEOFF RUNWAY 36L: Climb on heading 356° to intercept course 025° to cross MECHL at or above 4000, then on track 092° to cross BORDD at or above 6000, then on track 091° to cross JYMME at or above 7000, then on track 111° to HANUH, thence. . . .

TAKEOFF RUNWAY 36R: Climb on heading 356° to intercept course 023° to cross MECHL at or above 4000, then on track 092° to cross BORDD at or above 6000, then on track 091° to cross JYMME at or above 7000, then on track 111° to HANUH, thence. . . .

. . . .on track 079° to LYING, then on track 079° to FORCK. Maintain 10000, expect filed altitude ten minutes after departure.

TAKEOFF RUNWAY 31L/R: Climb on heading assigned by ATC for RADAR vectors to HANUH, thence. . . .

. . . .on track 079° to LYING, then on track 079° to FORCK. Maintain 5000, expect filed altitude ten minutes after departure.

SC-2, 08 AUG 2024 to 05 SEP 2024

SC-2, 08 AUG 2024 to 05 SEP 2024