

HRPER THREE DEPARTURE (RNAV)  
(HRPER3, HRPER) 04FEB16

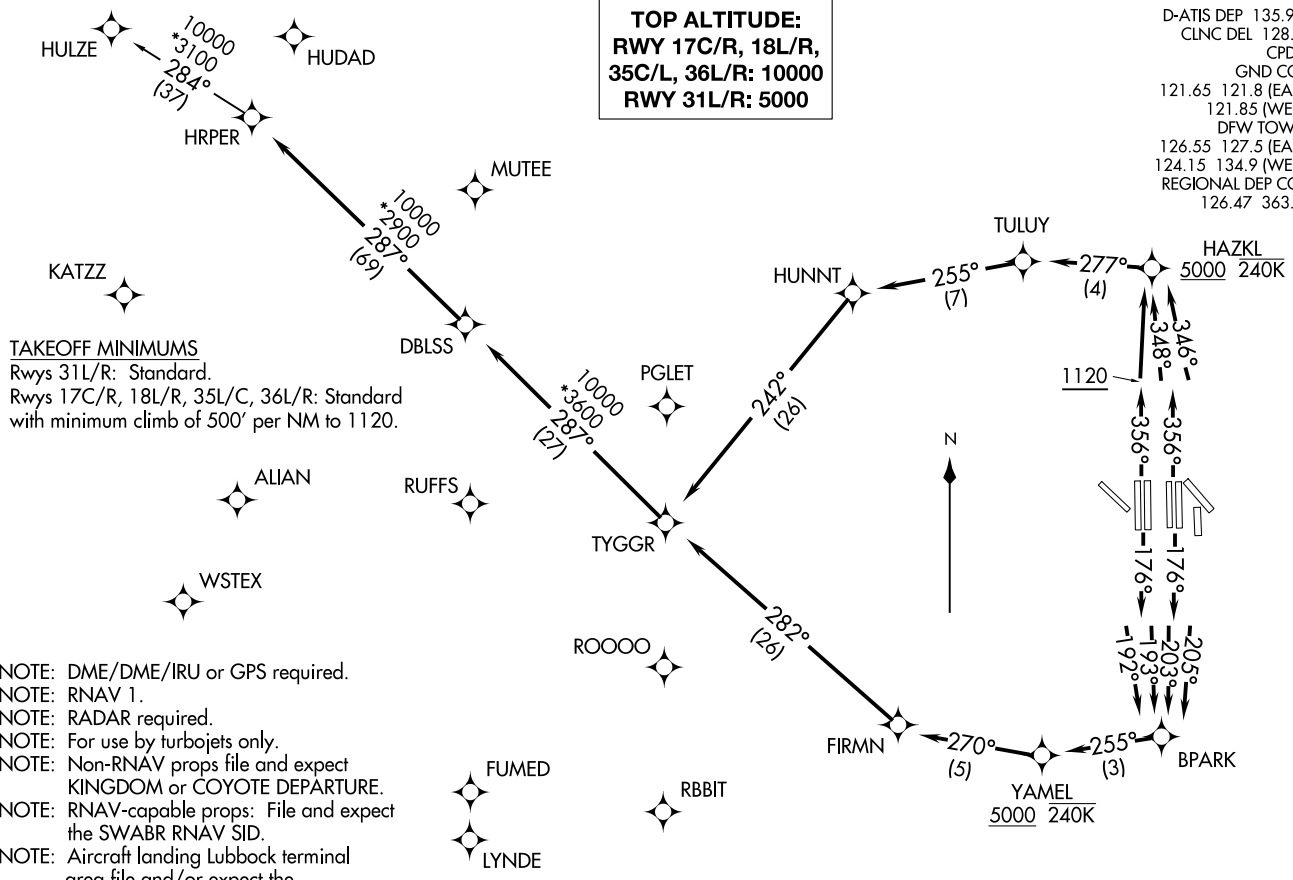
DALLAS-FORT WORTH, TEXAS  
DALLAS-FORT WORTH INTL (DFW)

(HRPER3, HRPER) 23334  
HRPER THREE DEPARTURE (RNAV)

AL-6039 (FAA)  
DALLAS-FORT WORTH INTL (DFW)  
DALLAS-FORT WORTH, TEXAS

**TOP ALTITUDE:**  
**RWY 17C/R, 18L/R,**  
**35C/L, 36L/R: 10000**  
**RWY 31L/R: 5000**

D-ATIS DEP 135.925  
CLNC DEL 128.25  
CPDLC  
GND CON  
121.65 121.8 (EAST)  
121.85 (WEST)  
DFW TOWER  
126.55 127.5 (EAST)  
124.15 134.9 (WEST)  
REGIONAL DEP CON  
126.47 363.15



TAKEOFF MINIMUMS  
Rwys 31L/R: Standard.  
Rwys 17C/R, 18L/R, 35L/C, 36L/R: Standard  
with minimum climb of 500' per NM to 1120.

- NOTE: DME/DME/IRU or GPS required.
- NOTE: RNAV 1.
- NOTE: RADAR required.
- NOTE: For use by turbojets only.
- NOTE: Non-RNAV props file and expect KINGDOM or COYOTE DEPARTURE.
- NOTE: RNAV-capable props: File and expect the SWABR RNAV SID.
- NOTE: Aircraft landing Lubbock terminal area file and/or expect the KATZZ RNAV DEPARTURE.

(NARRATIVE ON FOLLOWING PAGE)

NOTE: Chart not to scale.



DEPARTURE ROUTE DESCRIPTION

TAKEOFF RUNWAY 17C: Climb heading 176° to intercept course 205° to BPARK, then on track 255° to cross YAMEL at or above 5000, then on track 270° to FIRMN, then on track 282° to TYGGR, thence . . . .

TAKEOFF RUNWAY 17R: Climb heading 176° to intercept course 203° to BPARK, then on track 255° to cross YAMEL at or above 5000, then on track 270° to FIRMN, then on track 282° to TYGGR, thence . . . .

TAKEOFF RUNWAY 18L: Climb heading 176° to intercept course 193° to BPARK, then on track 255° to cross YAMEL at or above 5000, then on track 270° to FIRMN, then on track 282° to TYGGR, thence . . . .

TAKEOFF RUNWAY 18R: Climb heading 176° to intercept course 192° to BPARK, then on track 255° to cross YAMEL at or above 5000, then on track 270° to FIRMN, then on track 282° to TYGGR, thence . . . .

TAKEOFF RUNWAY 35C: Climb heading 356° to intercept course 346° to cross HAZKL at or above 5000, then on track 277° to TULUY, then on track 255° to HUNNT, then on track 242° to TYGGR, thence . . . .

TAKEOFF RUNWAY 35L: Climb heading 356° to intercept course 348° to cross HAZKL at or above 5000, then on track 277° to TULUY, then on track 255° to HUNNT, then on track 242° to TYGGR, thence . . . .

TAKEOFF RUNWAYS 36L/R: Climb heading 356° to 1120, then direct to cross HAZKL at or above 5000, then on track 277° to TULUY, then on track 255° to HUNNT, then on track 242° to TYGGR, thence . . . .

. . . . on track 287° to DBLSS, then on track 287° to HRPER, then on (transition).  
Maintain 10000, expect filed altitude ten minutes after departure.

TAKEOFF RUNWAYS 31L/R: Climb heading assigned by ATC, expect RADAR vectors to TYGGR, thence . . . .

. . . . on track 287° to DBLSS, then on track 287° to HRPER, then on (transition).  
Maintain 5000, expect filed altitude ten minutes after departure.

HULZE TRANSITION (HRPER3.HULZE)

SC-2, 08 AUG 2024 to 05 SEP 2024

SC-2, 08 AUG 2024 to 05 SEP 2024