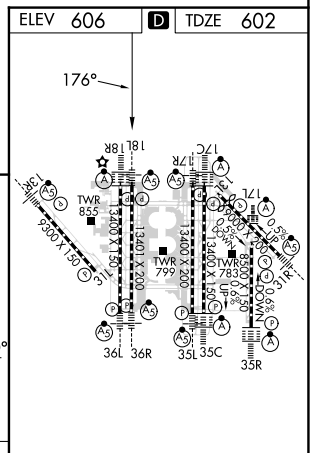
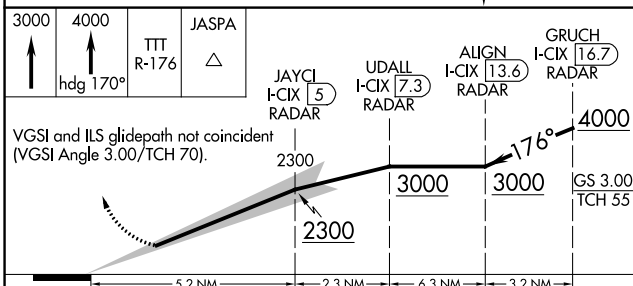
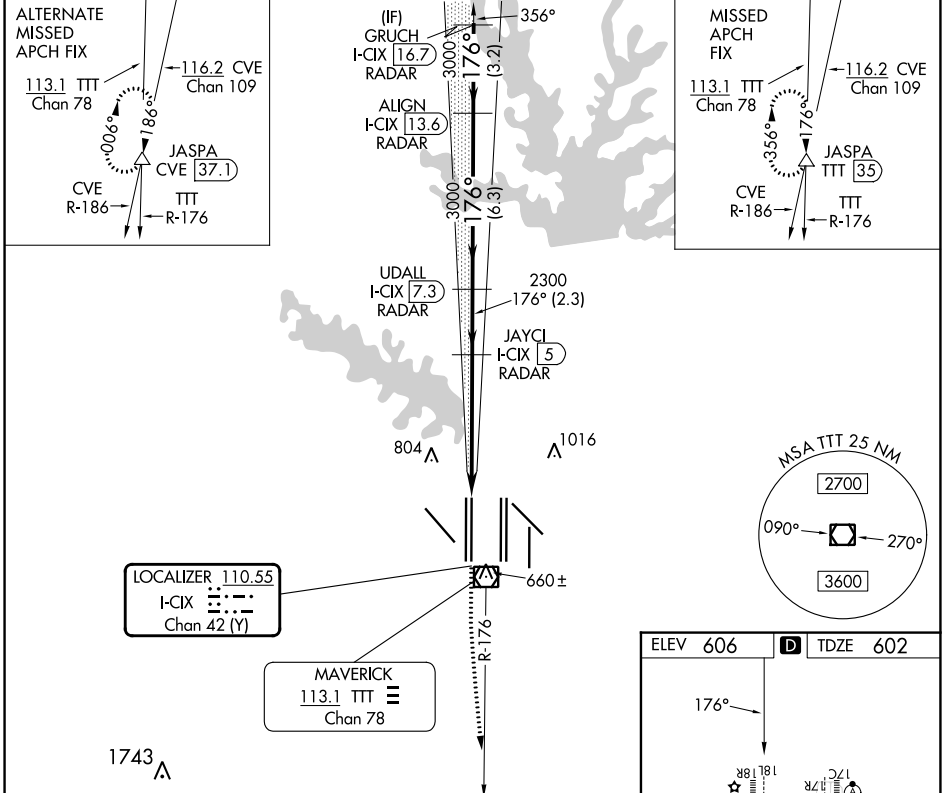


LOC/DME I-CIX 110.55 Chan 42 (Y)	APP CRS 176°	Rwy Idg 13401 TDZE 602 Apt Elev 606
--	------------------------	--

ILS RWY 18L (CONVERGING)

DALLAS-FORT WORTH INTL (DFW)

DME and RADAR required.		MALSR	MISSED APPROACH: Climb to 3000, then climb to 4000 on heading 170° and TTT VOR/DME R-176 to JASPA/TTT 35 DME and hold.		
Simultaneous approach authorized with CONVERGING ILS RWY 13R.					
D-ATIS ARR 123.775 DEP 135.925	REGIONAL APP CON 118.425	DFW TOWER 126.55 127.5 EAST 124.15 134.9 WEST	GND CON 121.65 121.8 EAST 121.85 WEST	CLNC DEL 128.25	CPDLC



CATEGORY	A	B	C	D	HIRL all Rwys REIL Rwys 13L and 31L TDZ/CL all Rwys except 13L and 31L
S-ILS 18L		802/18	200 (200-½)		

ILS RWY 18L (CONVERGING)

SC-2, 08 AUG 2024 to 05 SEP 2024

SC-2, 08 AUG 2024 to 05 SEP 2024