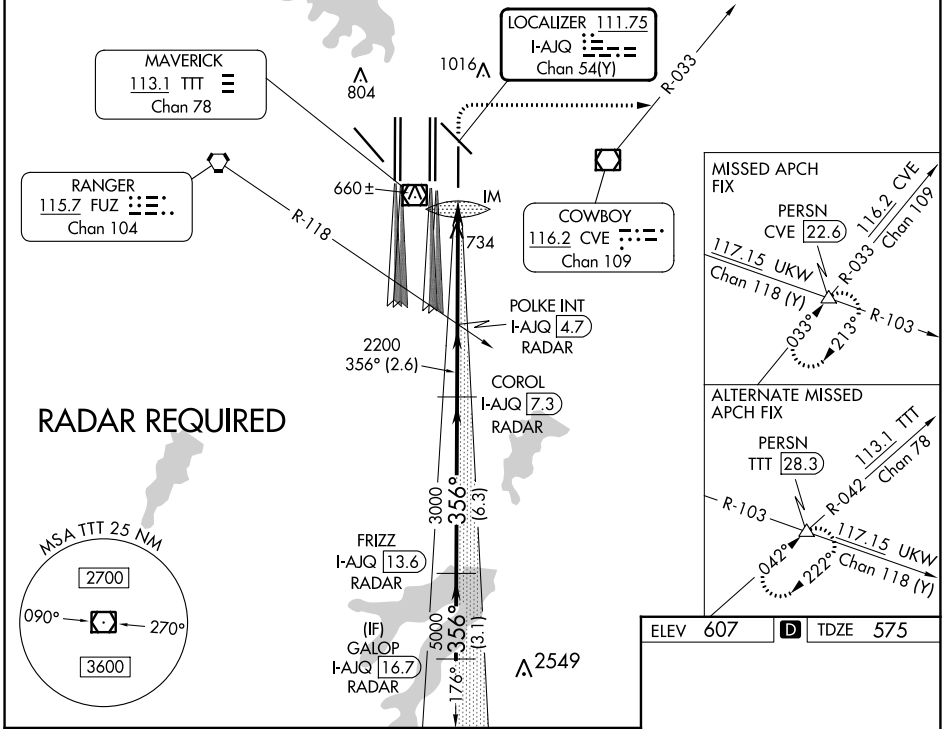


LOC/DME I-AJQ 111.75 Chan 54(Y)	APP CRS 356°	Rwy Idg TDZE Apt Elev 8500 575 607
--	------------------------	--

ILS RWY 35R (CAT II & III)

DALLAS-FORT WORTH INTL (DFW)

Simultaneous approach authorized with Rwy 36L/R and Rwy 35L/C. DME required.		ALSF-2	MISSED APPROACH: Climb to 1040 then climbing right turn to 3000 on heading 090° and CVE VOR/DME R-033 to PERSN/CVE 22.6 DME and hold.		
D-ATIS ARR 123.775 DEP 135.925	REGIONAL APP CON 119.4	DFW TOWER 126.55 127.5 EAST 124.15 134.9 WEST	GND CON 121.65 121.8 EAST 121.85 WEST	CLNC DEL 128.25	CPDLC

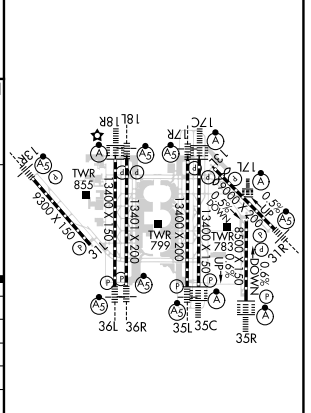


SC-2, 08 AUG 2024 to 05 SEP 2024

SC-2, 08 AUG 2024 to 05 SEP 2024

GALOP I-AJQ 16.7 RADAR	FRIZZ I-AJQ 13.6 RADAR	COROL I-AJQ 7.3 RADAR	POLKE INT I-AJQ 4.7 RADAR	1040	3000	CVE R-033	PERSN
5000	356°	2200	2200	IM	671		
GS 3.00° TCH 58	5000	3000	2200				
VGSI and ILS glidepath not coincident (VGSI Angle 3.00/TCH 73).							
3.1 NM		6.3 NM		2.6 NM		4.9 NM	
A		B		C		D	
S-ILS 35R	CAT II RA 94/12		100 DA 675				
S-ILS 35R	CAT IIIa		RVR 07				
S-ILS 35R	CAT IIIb		RVR 06				
S-ILS 35R	CAT IIIc		NA				

ELEV 607 **D** TDZE 575



CATEGORY II & III ILS - SPECIAL AIRCREW & AIRCRAFT CERTIFICATION REQUIRED

HIRL all Rwys
REL Rwys 13L and 31L
TDZ/CL all Rwys except 13L, and 31L