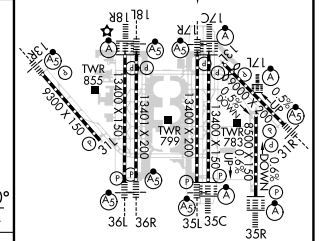
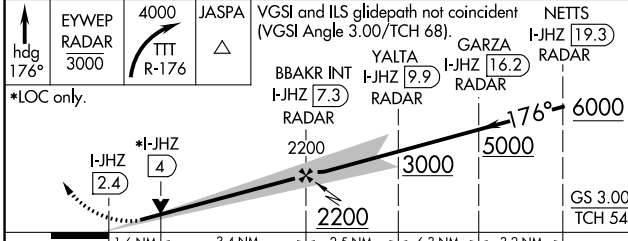
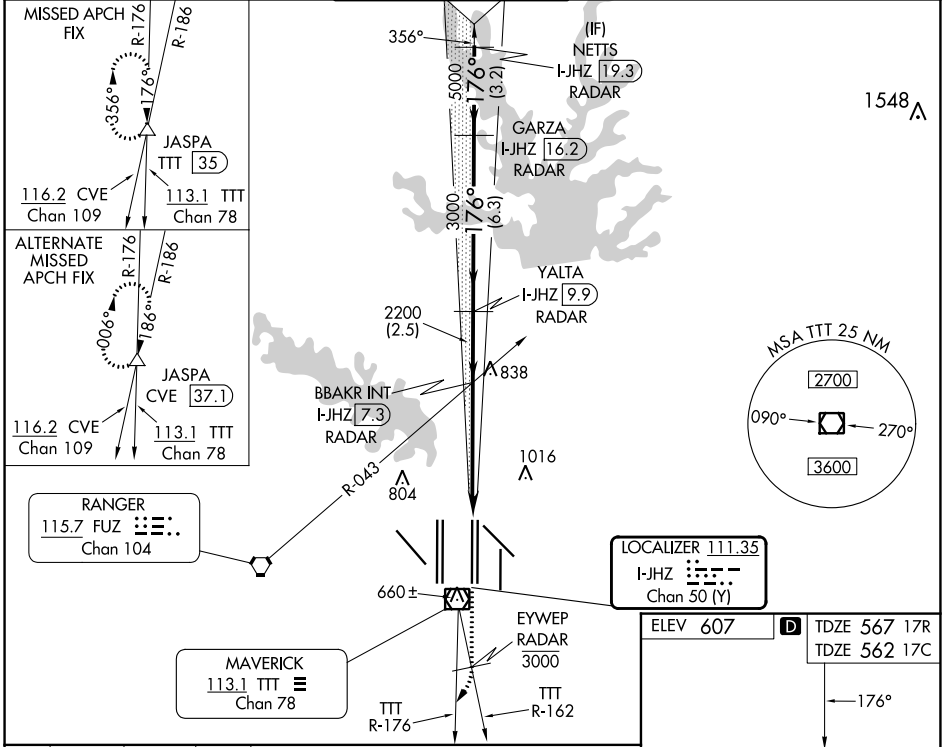


LOC/DME I-JHZ <b>111.35</b> Chan 50 (Y)	APP CRS <b>176°</b>	Rwy 17R Idg <b>13400</b> TDZE <b>567</b> Apt Elev <b>607</b>	Rwy 17C Idg <b>13400</b> TDZE <b>562</b> Apt Elev <b>607</b>
---	------------------------	--	--

# ILS or LOC RWY 17R

## DALLAS-FORT WORTH INTL (DFW)

DME and RADAR required.		Rwy 17R MALSR	Rwy 17C ALSF-2	MISSED APPROACH: Climb on heading 176° to cross EYWEP/RADAR at or below 3000, then climbing right turn to 4000 on TTT VOR/DME R-176 to JASPA/TTT 35 DME and hold.	
Simultaneous approach authorized with Rwy 17L, 18L/R.				GND CON <b>121.65</b> EAST <b>121.85</b> WEST	CLNC DEL <b>128.25</b>
D-ATIS ARR <b>123.775</b> DEP <b>135.925</b>	REGIONAL APP CON <b>127.075</b>	DFW TOWER <b>126.55</b> EAST <b>127.5</b> EAST <b>124.15</b> WEST <b>134.9</b> WEST		CPDLC	



CATEGORY	A	B	C	D
S-ILS 17R	767/18 200 (200-1/2)			
S-LOC 17R	1140/24	573 (600-1/2)	1140-1 1/4	573 (600-1 1/4)
SIDESTEP 17C	1140-1	578 (600-1)	1140-1 1/2	1140-2 578 (600-2)

HIRL all Rwys  
REIL Rwy 13L and 31L  
TDZ/CL all Rwy except 13L and 31L

SC-2, 08 AUG 2024 to 05 SEP 2024

SC-2, 08 AUG 2024 to 05 SEP 2024