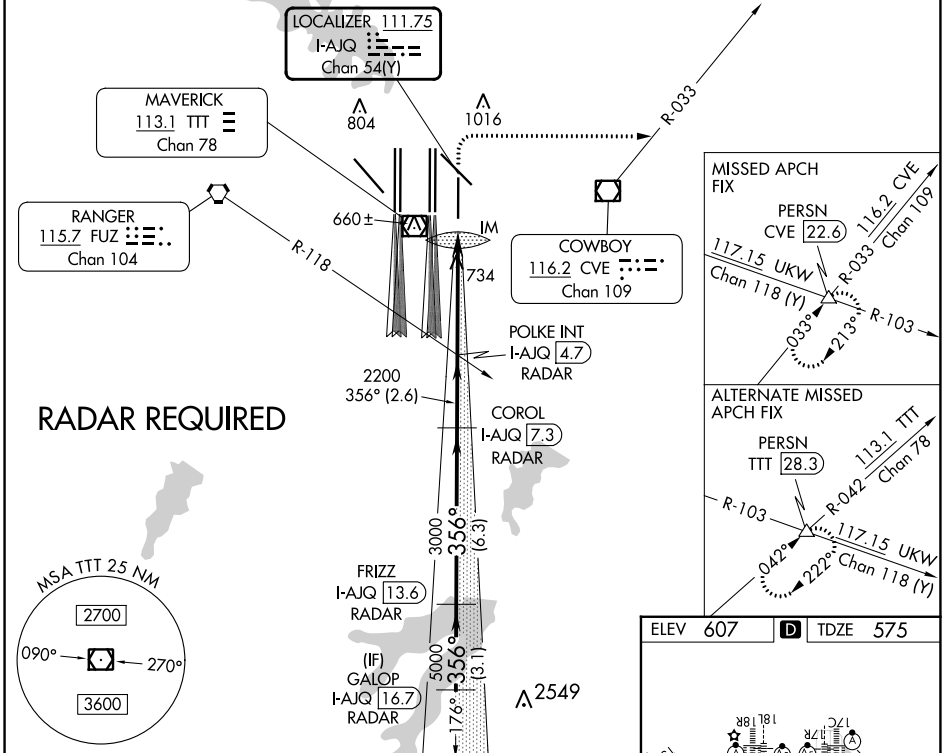


LOC/DME I-AJQ 111.75 Chan 54(Y)	APP CRS 356°	Rwy Idg TDZE Apt Elev 8500 575 607
--	------------------------	--

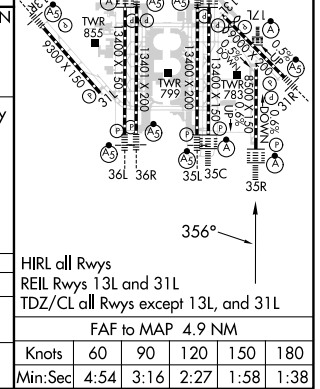
ILS or LOC RWY 35R

DALLAS-FORT WORTH INTL (DFW)

D-ATIS ARR 123.775 DEP 135.925		REGIONAL APP CON 119.4	DFW TOWER 126.55 127.5 EAST 124.15 134.9 WEST	GND CON 121.65 121.8 EAST 121.85 WEST	CLNC DEL 128.25	CPDLC
--	--	----------------------------------	---	---	---------------------------	-------



GALOP I-AJQ 16.7 RADAR	FRIZZ I-AJQ 13.6 RADAR	COROL I-AJQ 7.3 RADAR	POLKE INT I-AJQ 4.7 RADAR	1040 3000 CVE R-033	PERSN
5000 — 356° — 5000 — 3000 — 2200				*I-AJQ 1.1 I-AJQ DME ANTENNA IM I-AJQ 0.2 *LOC only	
GS 3.00° TCH 58 VGS1 and ILS glidepath not coincident (VGS1 Angle 3.00/TCH 73). 3.1 NM 6.3 NM 2.6 NM 3.7 NM 1.1 0.1					
CATEGORY	A	B	C	D	
S-ILS 35R	775/18 200 (200-½)				
S-LOC 35R	1040/24	465 (500-½)	1040/50	465 (500-1)	



SC-2, 08 AUG 2024 to 05 SEP 2024

SC-2, 08 AUG 2024 to 05 SEP 2024