

# JACKY ONE DEPARTURE

**TOP ALTITUDE:  
2000**


RNAV 1 - GPS. From BLECO, DECKK,  
NOOGY, ROLLS, ZEMMA.

RADAR required.

REGIONAL DEP CON  
118.1 306.95  
(Rwys 31L/R, 35L/C/R, 36 L/R)  
135.975 379.9  
(Rwys 13L/R, 17L/C/R, 18L/R)

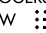
D-ATIS DEP  
135.925  
CLNC DEL  
128.25  
CPDLC  
GND CON  
121.65 121.8 (EAST)  
121.85 (WEST)  
DFW TOWER  
126.55 127.5 (EAST)  
124.15 134.9 (WEST)

△ ROLLS

TULSA  
114.4 TUL   
Chan 91

### TAKEOFF MINIMUMS

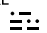
Rwys 13L/R, 17L/C/R, 18L/R, 31L/R, 35L/C, 36L/R: Standard.  
Rwy 35R: Standard with minimum climb of 245'/NM to 1200.

WILL ROGERS  
114.1 IRW   
Chan 88

DECKK  
△

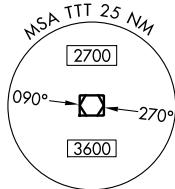
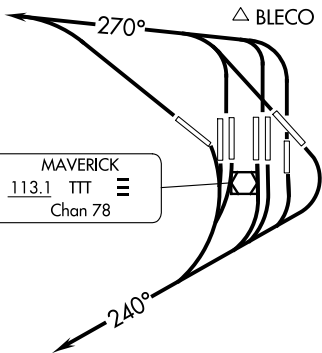
NOOGY  
△

ZEMMA  
△

ARDMORE  
116.7 ADM   
Chan 114

NOTE: Applicable in RADAR environment and for non-turbojet aircraft.

NOTE: BLECO Transition: ATC assigned.



NOTE: Chart not to scale.



### DEPARTURE ROUTE DESCRIPTION

#### NON-TURBOJET AIRCRAFT ONLY

TAKEOFF RUNWAYS 13L/R, 17L/C/R, 18L/R: Climb on heading 240° for RADAR vectors to appropriate route, thence....

TAKEOFF RUNWAYS 31L/R, 35L/C/R, 36L/R: Climb on heading 270° for RADAR vectors to appropriate route, thence....

....maintain 2000 and expect filed altitude 10 minutes after departure.

# JACKY ONE DEPARTURE