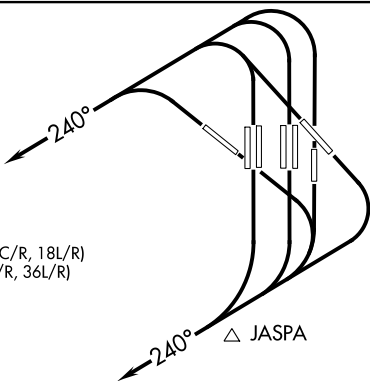


KEENE FOUR DEPARTURE

D-ATIS DEP
 135.925
 CLNC DEL
 128.25
 CPDLC
 GND CON
 121.65 121.8 (EAST)
 121.85 (WEST)
 DFW TOWER
 126.55 127.5 (EAST)
 124.15 134.9 (WEST)
 REGIONAL DEP CON
 135.975 379.9 (Rwys 13L/R, 17L/C/R, 18L/R)
 118.1 306.95 (Rwys 31L/R, 35L/C/R, 36L/R)

**TOP ALTITUDE:
 2000**



WACO
 115.3 ACT
 Chan 100

ELLVR

WINDU

TORN

BILEE

NOTE: For non-Turbojet aircraft only.
 NOTE: RADAR required.
 NOTE: JASPA TRANSITION: ATC assigned.

COLLEGE STATION
 113.3 CLL
 Chan 80

NAVASOTA
 115.9 TNV
 Chan 106

TAKEOFF MINIMUMS

Rwys 13L/R, 17L/C/R, 18L/R, 31L/R, 35L/C, 36L/R: Standard.
 Rwy 35R: 300-1¾ or standard with minimum climb of 230' per NM to 800, or alternatively, with standard takeoff minimums and a normal 200' per NM climb gradient, takeoff must occur no later than 1700' prior to DER.

NOTE: Chart not to scale.



DEPARTURE ROUTE DESCRIPTION

NON-TURBOJET AIRCRAFT ONLY

TAKEOFF ALL RUNWAYS: Climb on heading 240° for RADAR vectors to appropriate fix. Maintain 2000 and expect filed altitude 10 minutes after departure.

KEENE FOUR DEPARTURE

SC-2, 08 AUG 2024 to 05 SEP 2024

SC-2, 08 AUG 2024 to 05 SEP 2024