

(NELYN6.NELYN) 23334

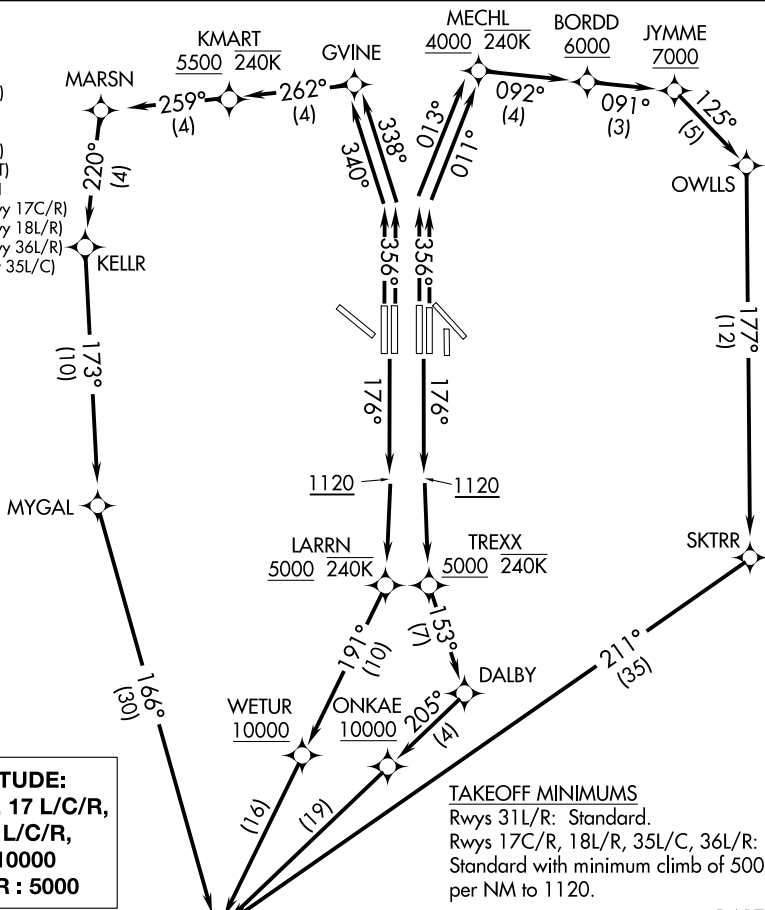
AL-6039 (FAA)

DALLAS-FORT WORTH INTL (DFW)

NELYN SIX DEPARTURE (RNAV)

DALLAS-FORT WORTH, TEXAS

D-ATIS DEP 135.925
 CLNC DEL 128.25
 CPDLC
 GND CON
 121.65 121.8 (EAST)
 121.85 (WEST)
 DFW TOWER
 126.55 127.5 (EAST)
 124.15 134.9 (WEST)
 REGIONAL DEP CON
 125.125 353.95 (Rwy 17C/R)
 125.125 353.95 (Rwy 18L/R)
 126.475 363.15 (Rwy 36L/R)
 118.55 290.35 (Rwy 35L/C)



TOP ALTITUDE:
 RWYS 13 L/R, 17 L/C/R,
 18 L/R, 35 L/C/R,
 36 L/R : 10000
 RWY 31 L/R : 5000

TAKEOFF MINIMUMS
 Rwy 31L/R: Standard.
 Rwy 17C/R, 18L/R, 35L/C, 36L/R:
 Standard with minimum climb of 500'
 per NM to 1120.

- NOTE: SAN ANTONIO TRANSITION: For aircraft overflying CENTEX and SAN ANTONIO.
- NOTE: WACO TRANSITION: For aircraft inbound to Waco or Gray terminal airports.
- NOTE: DME/DME/IRU or GPS required.
- NOTE: RNAV 1.
- NOTE: For use by turbo-jets only.
- NOTE: Turbo-jet aircraft landing San Antonio and Austin terminals areas expect the JASPA DEPARTURE.
- NOTE: Props file and expect KEENE or TRI-GATE DEPARTURE.
- NOTE: RADAR required.

(NARRATIVE ON FOLLOWING PAGE)

NOTE: Chart not to scale.

SC-2, 08 AUG 2024 to 05 SEP 2024

SC-2, 08 AUG 2024 to 05 SEP 2024

NELYN SIX DEPARTURE (RNAV)

(NELYN6.NELYN) 10OCT19

DALLAS-FORT WORTH, TEXAS

DALLAS-FORT WORTH INTL (DFW)



DEPARTURE ROUTE DESCRIPTION

TAKEOFF RUNWAYS 17C/R: Climb on heading 176° to 1120, then direct TREXX, cross TREXX at or above 5000 and at or below 240K, then on track 153° to DALBY, then on track 205° to cross ONKAE at or above 10000, then on depicted route to NELYN, thence. . . .

TAKEOFF RUNWAYS 18L/R: Climb on heading 176° to 1120, then direct LARRN, cross LARRN at or above 5000 and at or below 240K, then on track 191° to cross WETUR at or above 10000, then on depicted route to NELYN, thence. . . .

TAKEOFF RUNWAY 35C: Climb on heading 356° to intercept course 011° to cross MECHL at or above 4000 and at or below 240K, then on track 092° to cross BORDD at or above 6000, then on track 091° to cross JYMME at or above 7000, then on depicted route to NELYN, thence. . . .

TAKEOFF RUNWAY 35L: Climb on heading 356° to intercept course 013° to cross MECHL at or above 4000 and at or below 240K, then on track 092° to cross BORDD at or above 6000, then on track 091° to cross JYMME at or above 7000, then on depicted route to NELYN, thence. . . .

TAKEOFF RUNWAY 36L: Climb on heading 356° to intercept course 340° to GVINE, then on course 262° to cross KMART at or above 5500 and at or below 240K, then on depicted route to NELYN, thence. . . .

TAKEOFF RUNWAY 36R: Climb on heading 356° to intercept course 338° to GVINE, then on course 262° to cross KMART at or above 5500 and at or below 240K, then on depicted route to NELYN, thence. . . .

TAKEOFF RUNWAYS 31L/R: Climb on heading assigned by ATC, expect RADAR vectors to NELYN, maintain 5000, expect filed altitude ten minutes after departure.

. . . .(transition) Maintain 10000, expect filed altitude ten minutes after departure.

HOARY TRANSITION (NELYN6.HOARY):

SAN ANTONIO TRANSITION (NELYN6.SAT):

WACO TRANSITION (NELYN6.ACT):

SC-2, 08 AUG 2024 to 05 SEP 2024

SC-2, 08 AUG 2024 to 05 SEP 2024