

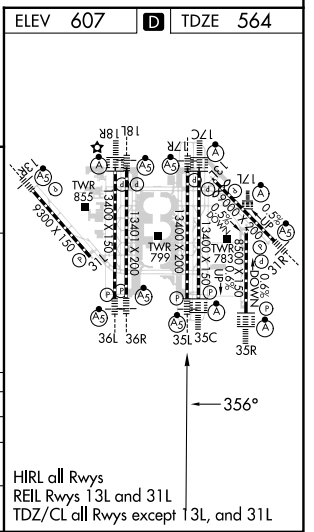
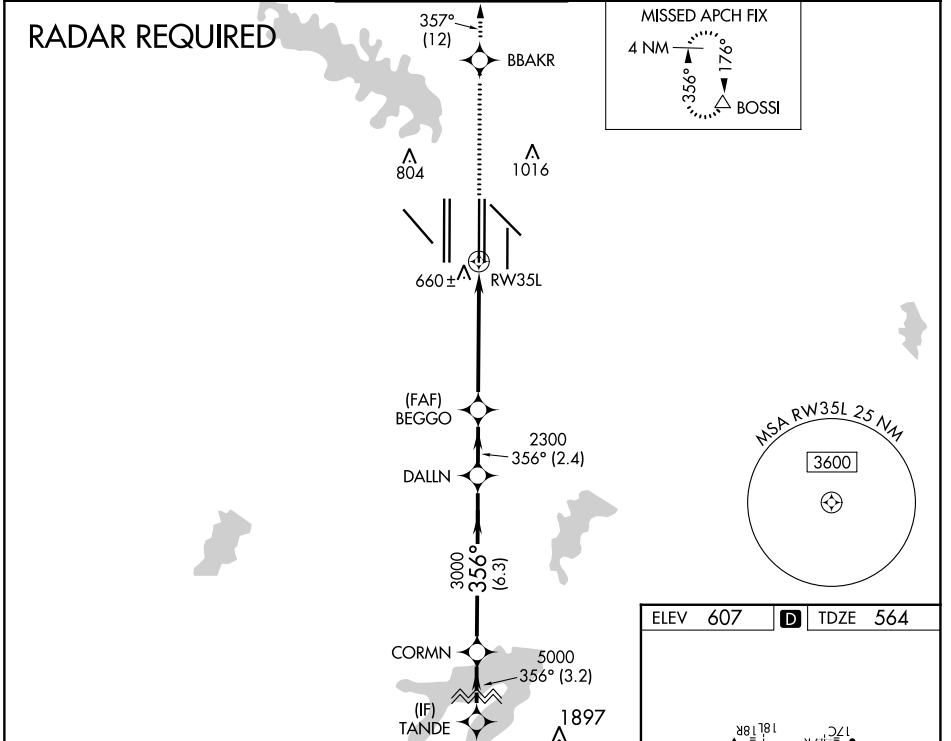
WAAS CH 45805 W35B	APP CRS 356°	Rwy Idg 13400 TDZE 564 Apt Elev 607
--	------------------------	--

RNAV (GPS) RWY 35L

DALLAS-FORT WORTH INTL (DFW)

<p>▽ For uncompensated Baro-VNAV systems, LNAV/VNAV NA below -4°C (25°F) or above 54°C (130°F). Simultaneous approach authorized with Rwy 36L/R and Rwy 35R. DME/DME RNP-0.3 NA. LNAV procedure NA during simultaneous operations. Use of FD or AP providing RNAV track guidance required during simultaneous operations.</p>		<p>MALSR A5</p>	<p>MISSED APPROACH: Climb to 3000 direct BBAKR and on track 357° to BOSSI and hold.</p>		
D-ATIS ARR 123.775 DEP 135.925	REGIONAL APP CON 127.075	DFW TOWER 126.55 127.5 EAST 124.15 134.9 WEST	GND CON 121.65 121.8 EAST 121.85 WEST	CLNC DEL 128.25	CPDLC

RADAR REQUIRED



VGSI and RNAV glidepath not coincident (VGSI Angle 3.00/TCH 63).

TANDE	CORMN	DALLN	BEGGO	BBAKR	BOSSI
6000	5000	3000	2300	tr 357°	△
GP 3.00° TCH 47					
	3.2 NM	6.3 NM	2.4 NM	4.1 NM	1.2
CATEGORY	A	B	C	D	
LPV DA		764/18	200 (200-½)		
LNAV/VNAV DA		928/40	364 (400-¾)		
LNAV MDA	1020/24	456 (500-½)	1020/45	456 (500-¾)	

*1.2 NM to RWY 35L

SC-2, 08 AUG 2024 to 05 SEP 2024

SC-2, 08 AUG 2024 to 05 SEP 2024